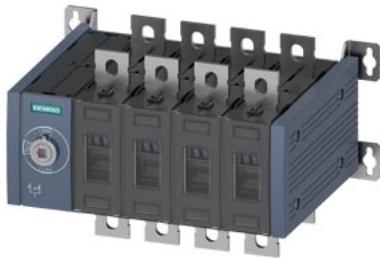


SENTRON, transfer switching equipment 3KC, manually operated, MTSE, size: 3, 4-pole, Iu: 200 A, Ue AC: 415 V, Ie at AC-33 B at 415 V: 200 A, Ie at AC-23 A at 690 V: 200 A, screw mounting, front operating mechanism, at the left end, without handle, busbar connection



Model	
product brand name	SENTRON
product designation	3KC transfer switching equipment
design of the product	manually operated
display version for switch position indicator door-coupling rotary operating mechanism	I ON- O OFF- II ON
design of the actuating element	Without handle
design of handle	without
type of the driving mechanism	Front operating mechanism
type of the driving mechanism motor drive	No
General technical data	
number of poles	4
type of device	fixed mounting
size of switch disconnector	3
mechanical service life (operating cycles) for function sequence O-I-O typical	10 000
I2t value	
<ul style="list-style-type: none"> <li>with closed switch for combination switch + fuse at 500 V maximum</li> </ul>	426 500 A <sup>2</sup> ·s
<ul style="list-style-type: none"> <li>with closed switch at 690 V for combination switch + gG fuse maximum</li> </ul>	348 000 A <sup>2</sup> ·s
<ul style="list-style-type: none"> <li>of the fuse at 415 V maximum permissible</li> </ul>	780 005 A <sup>2</sup> ·s
<ul style="list-style-type: none"> <li>of the fuse at 500 V maximum permissible</li> </ul>	780 005 A <sup>2</sup> ·s
<ul style="list-style-type: none"> <li>of the gG fuse at 690 V maximum permissible</li> </ul>	525 005 A <sup>2</sup> ·s
<ul style="list-style-type: none"> <li>with closed switch for combination switch + fuse at 415 V maximum</li> </ul>	426 500 A <sup>2</sup> ·s
position of the switch operating mechanism	at the left end
overvoltage category	IV
degree of pollution	3
insulation voltage	
<ul style="list-style-type: none"> <li>rated value</li> </ul>	1 000 V
Protection class	
protection class IP	IP00
protection class IP	
<ul style="list-style-type: none"> <li>with closed switch with cover or cable lug cover</li> </ul>	IP20
<ul style="list-style-type: none"> <li>on the front</li> </ul>	IP00
Dissipation	
power loss [W]	
<ul style="list-style-type: none"> <li>with conventional rated thermal current per device</li> </ul>	16 W
Main circuit	
operating power	

<ul style="list-style-type: none"> <li>at AC-23 A at 400 V at 50/60 Hz rated value</li> </ul>	110 kW
<ul style="list-style-type: none"> <li>at AC-23 A at 500 V rated value</li> </ul>	132 kW
operational current rated value	200 A
<b>Auxiliary circuit</b>	
number of connected NC contacts for auxiliary contacts	0
number of connected NO contacts for auxiliary contacts	0
number of connected CO contacts for auxiliary contacts	0
number of CO contacts for auxiliary contacts	0
number of NC contacts for auxiliary contacts	12
number of NO contacts for auxiliary contacts	12
suitability for use main switch	Yes
suitability for use switch disconnecter	Yes
suitability for use EMERGENCY OFF switch	Yes
suitability for use safety switch	Yes
suitability for use maintenance/repair switch	Yes
product feature interlock	No
product extension auxiliary switch	Yes
product extension optional motor drive	No
product extension optional voltage trigger	No
<b>Short circuit</b>	
<b>short-circuit current making capacity (Icm) for switch disconnecter</b> <ul style="list-style-type: none"> <li>at 415 V AC without fuse link according to IEC 60947-6-1 rated value minimum</li> </ul>	36 kA
<ul style="list-style-type: none"> <li>at 690 V AC without fuse link according to IEC 60947-3 rated value minimum</li> </ul>	26 kA
<b>conditional short-circuit current with line-side fuse protection</b> <ul style="list-style-type: none"> <li>at 415 V by gG fuse according to IEC 60947-6-1 rated value</li> </ul>	100 kA
<ul style="list-style-type: none"> <li>at 415 V by gG fuse rated value</li> </ul>	100 kA
<ul style="list-style-type: none"> <li>at 500 V by gG fuse according to IEC 60947-3 rated value</li> </ul>	100 kA
<ul style="list-style-type: none"> <li>at 690 V by gG fuse according to IEC 60947-3 rated value</li> </ul>	65 kA
<b>Connections</b>	
type of connectable conductor cross-sections for aluminum conductor stranded with lug	1x (25 ... 240 mm <sup>2</sup> ), 2x (25 ... 120 mm <sup>2</sup> )
<b>type of connectable conductor cross-sections</b> <ul style="list-style-type: none"> <li>with combination of Al conductor+switch</li> </ul>	200 A / 240 mm <sup>2</sup>
<ul style="list-style-type: none"> <li>for copper busbar</li> </ul>	1x (30x10 mm <sup>2</sup> )
<b>type of connectable conductor cross-sections for copper conductor</b> <ul style="list-style-type: none"> <li>stranded with lug according to DIN 46234</li> </ul>	1x (6 ... 240 mm <sup>2</sup> ), 2x (6 ... 150 mm <sup>2</sup> )
<ul style="list-style-type: none"> <li>stranded with lug according to DIN 46235</li> </ul>	1x (16 ... 185 mm <sup>2</sup> ), 2x (16 ... 150 mm <sup>2</sup> )
type of electrical connection	
<ul style="list-style-type: none"> <li>for main current circuit</li> </ul>	busbar connection
<b>Mechanical Design</b>	
height	164 mm
width	279 mm
depth	197.2 mm
fastening method	screw fixing
fastening method	
<ul style="list-style-type: none"> <li>4-hole front mounting</li> </ul>	No
<ul style="list-style-type: none"> <li>front mounting with central attachment</li> </ul>	No
<ul style="list-style-type: none"> <li>rail mounting</li> </ul>	No
<b>Net Weight</b>	7.926 kg
<b>Environmental conditions</b>	
<b>ambient temperature during operation</b> <ul style="list-style-type: none"> <li>minimum</li> </ul>	-25 °C
<ul style="list-style-type: none"> <li>maximum</li> </ul>	70 °C
<b>ambient temperature during storage</b> <ul style="list-style-type: none"> <li>minimum</li> </ul>	-50 °C

• maximum

80 °C

## Approvals Certificates

### General Product Approval



[Miscellaneous](#)



### Test Certificates

### Maritime application

### other

### Environment

[Type Test Certificates/Test Report](#)



[Confirmation](#)

[Environmental Confirmations](#)

## Environment

[Environmental Confirmations](#)

## Further information

### Information on the packaging

<https://support.industry.siemens.com/cs/ww/en/view/109813875>

### Information for data generation and storage

<https://support.industry.siemens.com/cs/ww/en/view/109995012>

### Information- and Downloadcenter (Catalogs, Brochures,...)

<http://www.siemens.com/lowvoltage/catalogs>

### Industry Mall (Online ordering system)

<https://mall.industry.siemens.com/mall/en/en/Catalog/product?mlfb=3KC0436-0PE00-0AA0>

### Service&Support (Manuals, Certificates, Characteristics, FAQs,...)

<https://support.industry.siemens.com/cs/ww/en/ps/3KC0436-0PE00-0AA0>

### Image database (product images, 2D dimension drawings, 3D models, device circuit diagrams, ...)

[http://www.automation.siemens.com/bilddb/cax\\_en.aspx?mlfb=3KC0436-0PE00-0AA0](http://www.automation.siemens.com/bilddb/cax_en.aspx?mlfb=3KC0436-0PE00-0AA0)

### CAX-Online-Generator

<http://www.siemens.com/cax>

### Tender specifications

<http://www.siemens.com/specifications>

