



SWITCH-DISCONNECTOR 250A, FRAME SIZE 2, 3-POLE FRONT OPERATING LEFT COMPLETE ASSEMBLY DIRECT OPERATING MECHANISM GREY FLAT TERMINAL INCL. PHASE BARRIERS

| Model | |
|-----------------------------------------------------------------------------------------------|-----------------------------|
| product brand name | SENTRON |
| product designation | 3KD switch disconnecter |
| design of the product | Switch |
| display version for switch position indicator manual operation | ON-OFF-TEST |
| design of the actuating element | Long rotary knob |
| type of the driving mechanism | Front operating mechanism |
| type of the driving mechanism motor drive | No |
| General technical data | |
| number of poles | 3 |
| type of device | fixed mounting |
| size of switch disconnecter | 2 |
| mechanical service life (operating cycles) typical | 15 000 |
| electrical endurance (operating cycles) | |
| • at AC-23 A at 690 V | 1 500 |
| • at DC-23 A at 440 V | 1 000 |
| I ² t value | |
| • with closed switch at 1000 V for combination switch +gG/aM SITOR fuse maximum | 19 815 A ² ·s |
| • of the fuse at 500 V maximum permissible | 780 000 A ² ·s |
| • of the gG fuse at 690 V maximum permissible | 525 000 A ² ·s |
| • of the aM fuse at 690 V maximum permissible | 565 000 A ² ·s |
| • of the gG/aM SITOR fuse at 1000 V maximum permissible | 48 000 A ² ·s |
| • of the molded case circuit breaker at 415 V maximum permissible | 1 750 000 A ² ·s |
| position of the switch operating mechanism | at the left end |
| overvoltage in percent relative to the operating voltage at AC at 400, 500, 690 V at 50/60 Hz | 10 % |
| overvoltage category | III |
| degree of pollution | 3 |
| Voltage | |
| operating voltage with current paths in series | |
| • with degree of pollution 2 at DC rated value | 440 V / 3 |
| • with degree of pollution 3 at DC rated value | 440 V / 3 |
| insulation voltage | |
| • rated value | 1 000 V |
| surge voltage resistance rated value | 8 kV |
| operational current at AC-22 A at 1000 V maximum | 200 A |
| let-through current of the fuse at 500 V maximum permissible | 25 700 A |

| | |
|----------------------------------------------------------------------------------------------------------------------------------------------------------------------------------------------------------------------------------------------|---------------------------------|
| let-through current of the gG fuse at 690 V maximum permissible | 29 500 A |
| Supply voltage | |
| operating voltage at AC rated value | 1 000 V |
| Protection class | |
| protection class IP | IP00 |
| protection class IP | |
| <ul style="list-style-type: none"> with closed switch with cover or cable lug cover on the front | IP20 IP00 |
| Dissipation | |
| power loss [W] | |
| <ul style="list-style-type: none"> with conventional rated thermal current per pole with conventional rated thermal current per device for rated value of the current at AC in hot operating state per pole | 8.2 W 24.6 W 8.2 W |
| Main circuit | |
| operating power | |
| <ul style="list-style-type: none"> at AC-23 A at 500 V rated value | 110 kW |
| operational current rated value | 250 A |
| Auxiliary circuit | |
| number of connected NC contacts for auxiliary contacts | 0 |
| number of connected NO contacts for auxiliary contacts | 0 |
| number of connected CO contacts for auxiliary contacts | 0 |
| number of CO contacts for auxiliary contacts | 4 |
| number of NC contacts for auxiliary contacts | 0 |
| number of NO contacts for auxiliary contacts | 0 |
| Suitability | |
| suitability for use main switch | Yes |
| suitability for use switch disconnecter | Yes |
| suitability for use EMERGENCY OFF switch | No |
| suitability for use safety switch | Yes |
| suitability for use according to IEC 62626-1 safety switch | No |
| suitability for use maintenance/repair switch | Yes |
| Product details | |
| product feature interlock | Yes |
| product component | |
| <ul style="list-style-type: none"> trip indicator voltage trigger undervoltage release undervoltage release with leading contact | No No No No |
| product extension auxiliary switch | Yes |
| product extension optional motor drive | No |
| product extension optional voltage trigger | No |
| Short circuit | |
| short-time withstand current (I_{cw}) at 1000 V AC/440 V DC limited to 1 s rated value | 4 kA |
| short-circuit current making capacity (I_{cm}) for switch disconnecter | |
| <ul style="list-style-type: none"> at 400 V AC without fuse link rated value minimum at 1000 V AC without fuse link rated value minimum at DC 440 V without fuse link rated value minimum | 30 kA 12 kA 12 kA |
| conditional short-circuit current with line-side fuse protection | |
| <ul style="list-style-type: none"> at 415 V by molded case circuit breaker rated value at 500 V by gG fuse rated value at 690 V by gG fuse rated value | 65 kA 100 kA 100 kA |
| Connections | |
| type of connectable conductor cross-sections for aluminum conductor | |
| <ul style="list-style-type: none"> stranded with lug | 1x (10 ... 70 mm ²) |
| type of connectable conductor cross-sections | |
| <ul style="list-style-type: none"> with combination of Al conductor+switch | 130A / 70 mm ² |

| | |
|--------------------------------------------------------|----------------------------|
| • for copper busbar | 1x (20x4 mm ²) |
| type of electrical connection for main current circuit | flat connector |

Mechanical Design

| | |
|------------------------------------------|-----------------------------------------------|
| height | 168 mm |
| width | 121 mm |
| depth | 97 mm |
| fastening method | Screw fixing and standard rail mounting 35 mm |
| fastening method | |
| • 4-hole front mounting | No |
| • front mounting with central attachment | No |
| • rail mounting | Yes |
| mounting position | any |
| Net Weight | 1.052 kg |

Environmental conditions

| | |
|--------------------------------------|--------|
| ambient temperature during operation | |
| • minimum | -25 °C |
| • maximum | 70 °C |
| ambient temperature during storage | |
| • minimum | -50 °C |
| • maximum | 80 °C |

Certificates

| | |
|-----------------------------------------|---|
| reference code according to IEC 81346-2 | Q |
|-----------------------------------------|---|

Approvals Certificates

General Product Approval



[Miscellaneous](#)



| | | | |
|-------------------|----------------------|-------|-------------|
| Test Certificates | Maritime application | other | Environment |
|-------------------|----------------------|-------|-------------|

[Type Test Certificates/Test Report](#)



[Confirmation](#)

[Miscellaneous](#)

[Environmental Confirmations](#)

Further information

Information on the packaging

<https://support.industry.siemens.com/cs/ww/en/view/109813875>

Information for data generation and storage

<https://support.industry.siemens.com/cs/ww/en/view/109995012>

Information- and Downloadcenter (Catalogs, Brochures,...)

<http://www.siemens.com/lowvoltage/catalogs>

Industry Mall (Online ordering system)

<https://mall.industry.siemens.com/mall/en/en/Catalog/product?mlfb=3KD3832-0NE10-0>

Service&Support (Manuals, Certificates, Characteristics, FAQs,...)

<https://support.industry.siemens.com/cs/ww/en/ps/3KD3832-0NE10-0>

Image database (product images, 2D dimension drawings, 3D models, device circuit diagrams, ...)

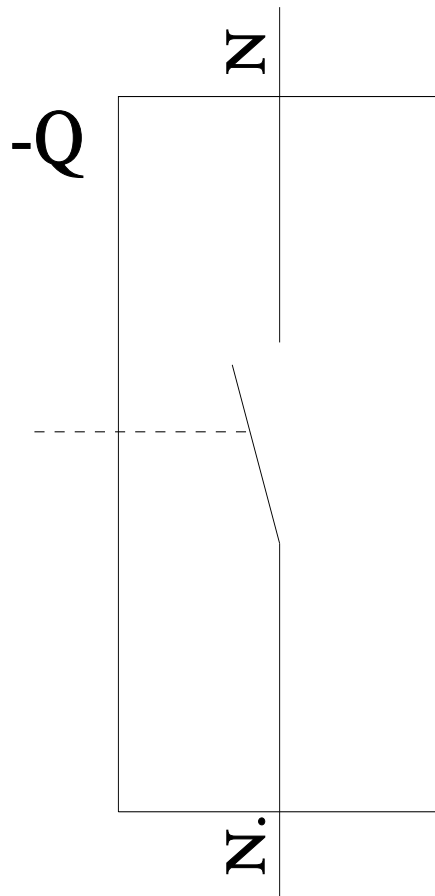
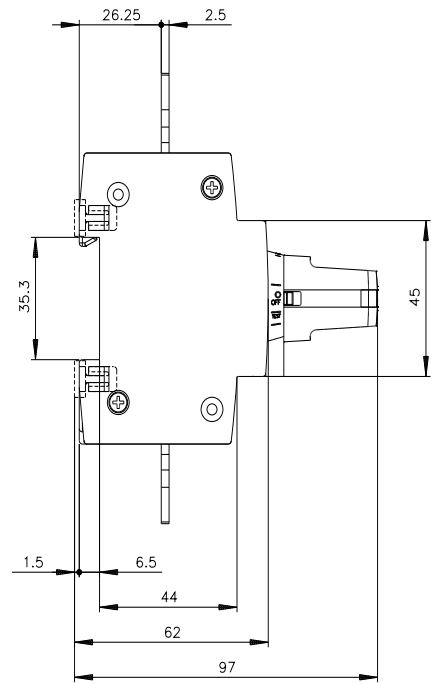
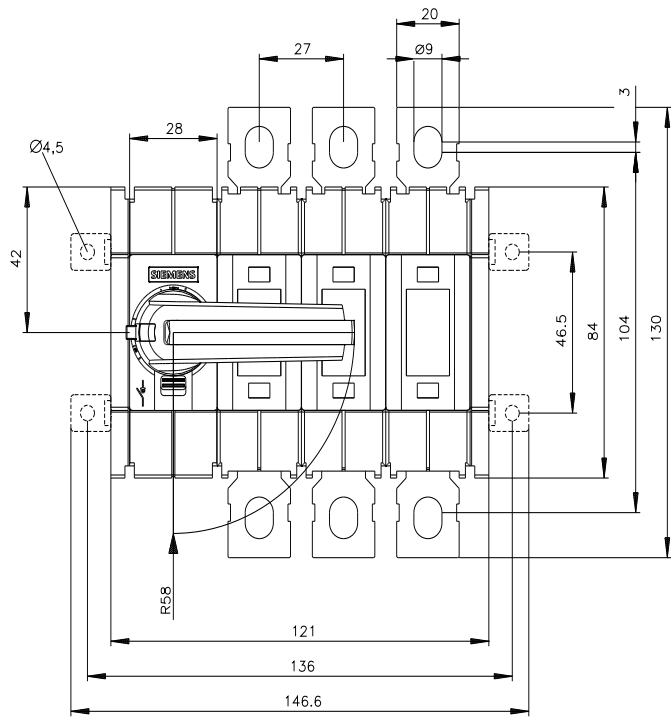
http://www.automation.siemens.com/bilddb/cax_en.aspx?mlfb=3KD3832-0NE10-0

CAx-Online-Generator

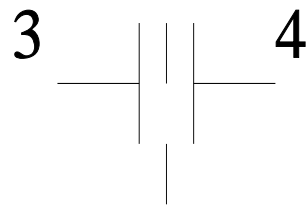
<http://www.siemens.com/cax>

Tender specifications

<http://www.siemens.com/specifications>



-CR



last modified:

7/9/2025 

