



Terminal cover, 1-pole, 16A, accessory for main and emergency switching-off switch 3LD2

Model	
product brand name	SETRON
product designation	terminal cover
design of the product	accessories for 3LD2 main and EMERGENCY-STOP switches
Accessories	
accessories	1-pole, 16 A
Mechanical Design	
Net Weight	3 g
Approvals Certificates	
General Product Approval	other



[Confirmation](#)

Environment

[Environmental Con-
firmations](#)

[Environmental Con-
firmations](#)

Further information

Information on the packaging

<https://support.industry.siemens.com/cs/ww/en/view/109813875>

Information for data generation and storage

<https://support.industry.siemens.com/cs/ww/en/view/109995012>

Information- and Downloadcenter (Catalogs, Brochures,...)

<http://www.siemens.com/lowvoltage/catalogs>

Industry Mall (Online ordering system)

<https://mall.industry.siemens.com/mall/en/en/Catalog/product?mlfb=3LD9201-2A>

Service&Support (Manuals, Certificates, Characteristics, FAQs,...)

<https://support.industry.siemens.com/cs/ww/en/ps/3LD9201-2A>

Image database (product images, 2D dimension drawings, 3D models, device circuit diagrams, ...)

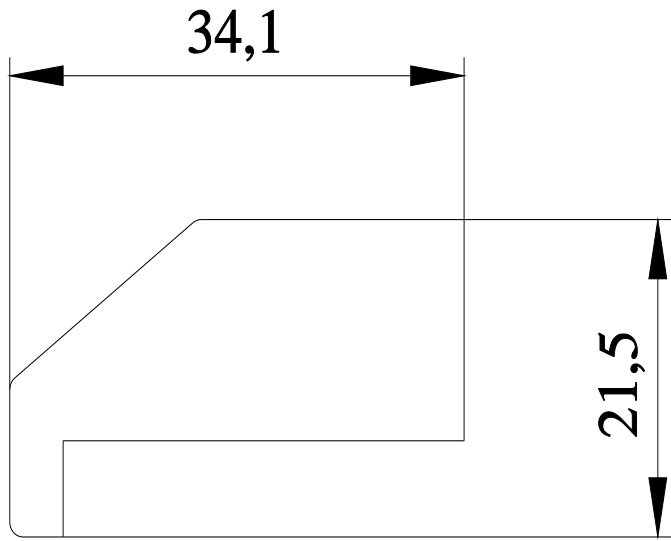
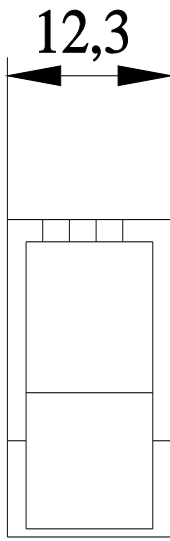
http://www.automation.siemens.com/bilddb/cax_en.aspx?mlfb=3LD9201-2A

CAX-Online-Generator

<http://www.siemens.com/cax>

Tender specifications

<https://www.siemens.com/specifications>



last modified:

4/12/2025 

