



Neutral conductor/PE terminal, continuous, for Front mounting, Up to 32 A, accessory for main and emergency switching-off switch 3LD2

Model	
product brand name	SETRON
product designation	Neutral conductor/PE terminal
design of the product	accessories for 3LD2 main and EMERGENCY-STOP switches
Accessories	
accessories	through-type, for front mounting, up to 32 A
AWG number as coded connectable conductor cross section	
• minimum	14
• maximum	8
type of connectable conductor cross-sections for main contacts	
• finely stranded with core end processing	1x (1.5 ... 16 mm <sup>2</sup> )
• solid or stranded	1x (1.5...10 mm <sup>2</sup> )
Mechanical Design	
Net Weight	34 g
Approvals Certificates	
General Product Approval	other



[Confirmation](#)



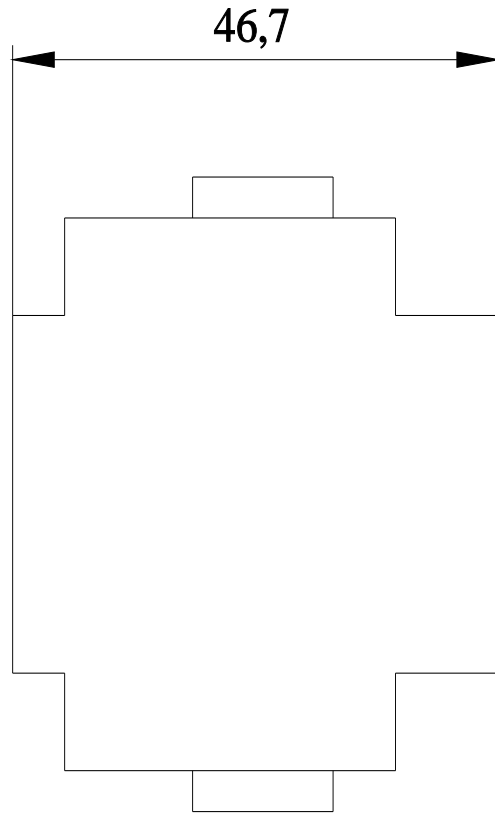
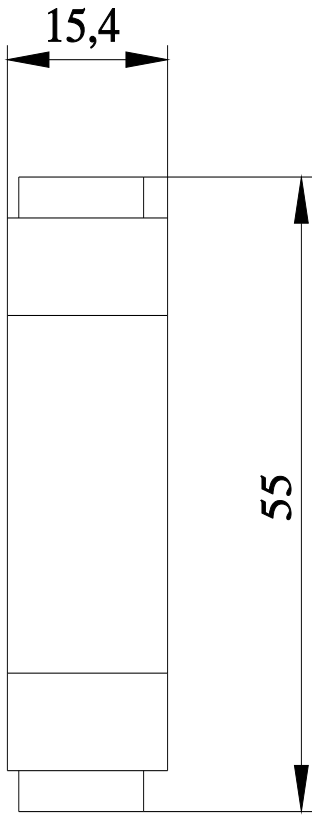
Environment

[Environmental Con-  
firmations](#)

[Environmental Con-  
firmations](#)

Further information

- Information on the packaging  
<https://support.industry.siemens.com/cs/ww/en/view/109813875>
- Information for data generation and storage  
<https://support.industry.siemens.com/cs/ww/en/view/109995012>
- Information- and Downloadcenter (Catalogs, Brochures,...)  
<http://www.siemens.com/lowvoltage/catalogs>
- Industry Mall (Online ordering system)  
<https://mall.industry.siemens.com/mall/en/en/Catalog/product?mlfb=3LD9220-2B>
- Service&Support (Manuals, Certificates, Characteristics, FAQs,...)  
<https://support.industry.siemens.com/cs/ww/en/ps/3LD9220-2B>
- Image database (product images, 2D dimension drawings, 3D models, device circuit diagrams, ...)



last modified:

4/12/2025 

