



Neutral conductor/PE terminal, continuous, for floor mounting, Up to 32 A, accessory for main and emergency switching-off switch 3LD2

Model	
product brand name	SETRON
product designation	Neutral conductor/PE terminal
design of the product	accessories for 3LD2 main and EMERGENCY-STOP switches
Accessories	
accessories	through-type, for floor mounting, up to 32 A
AWG number as coded connectable conductor cross section	
<ul style="list-style-type: none"> • minimum • maximum 	14 8
type of connectable conductor cross-sections for main contacts	
<ul style="list-style-type: none"> • finely stranded with core end processing • solid or stranded 	1x (1.5 ... 16 mm ²) 1x (1.5...10 mm ²)
Mechanical Design	
Net Weight	34 g
Approvals Certificates	
General Product Approval	other



[Confirmation](#)

Environment

[Environmental Conformations](#)

[Environmental Conformations](#)

Further information

Information on the packaging

<https://support.industry.siemens.com/cs/ww/en/view/109813875>

Information for data generation and storage

<https://support.industry.siemens.com/cs/ww/en/view/109995012>

Information- and Downloadcenter (Catalogs, Brochures,...)

<http://www.siemens.com/lowvoltage/catalogs>

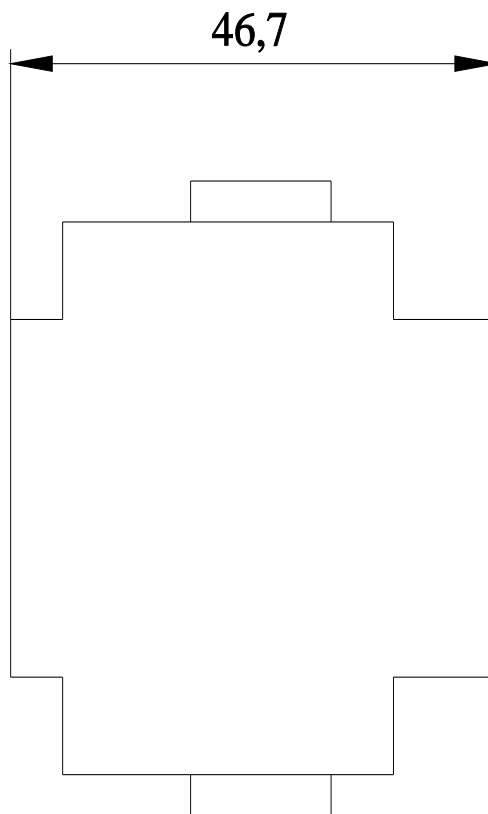
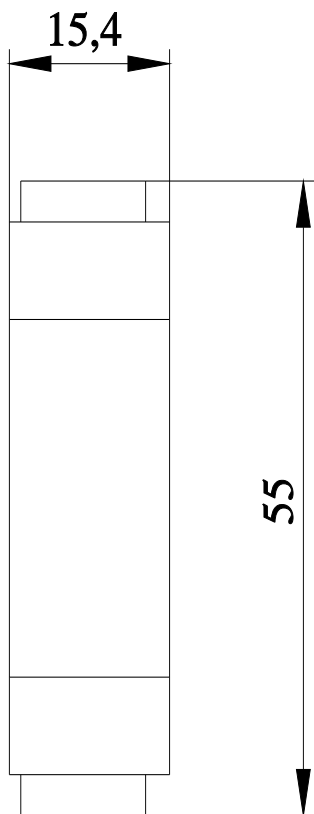
Industry Mall (Online ordering system)

<https://mall.industry.siemens.com/mall/en/en/Catalog/product?mlfb=3LD9220-2C>

Service&Support (Manuals, Certificates, Characteristics, FAQs,...)

<https://support.industry.siemens.com/cs/ww/en/ps/3LD9220-2C>

Image database (product images, 2D dimension drawings, 3D models, device circuit diagrams, ...)



last modified:

4/12/2025 

