



Terminal cover, 1-pole, for 25 A and 32 A, Accessory for main and emergency switching-off switch 3LD2

Model	
product brand name	SETRON
product designation	terminal cover
design of the product	accessories for 3LD2 main and EMERGENCY-STOP switches
Accessories	
accessories	1-pole, for 25 A and 32 A
Mechanical Design	
Net Weight	4 g
Approvals Certificates	
General Product Approval	other



[Confirmation](#)

### Environment

[Environmental Con-  
firmations](#)

[Environmental Con-  
firmations](#)

### Further information

**Information on the packaging**

<https://support.industry.siemens.com/cs/ww/en/view/109813875>

**Information for data generation and storage**

<https://support.industry.siemens.com/cs/ww/en/view/109995012>

**Information- and Downloadcenter (Catalogs, Brochures,...)**

<http://www.siemens.com/lowvoltage/catalogs>

**Industry Mall (Online ordering system)**

<https://mall.industry.siemens.com/mall/en/en/Catalog/product?mlfb=3LD9221-2A>

**Service&Support (Manuals, Certificates, Characteristics, FAQs,...)**

<https://support.industry.siemens.com/cs/ww/en/ps/3LD9221-2A>

**Image database (product images, 2D dimension drawings, 3D models, device circuit diagrams, ...)**

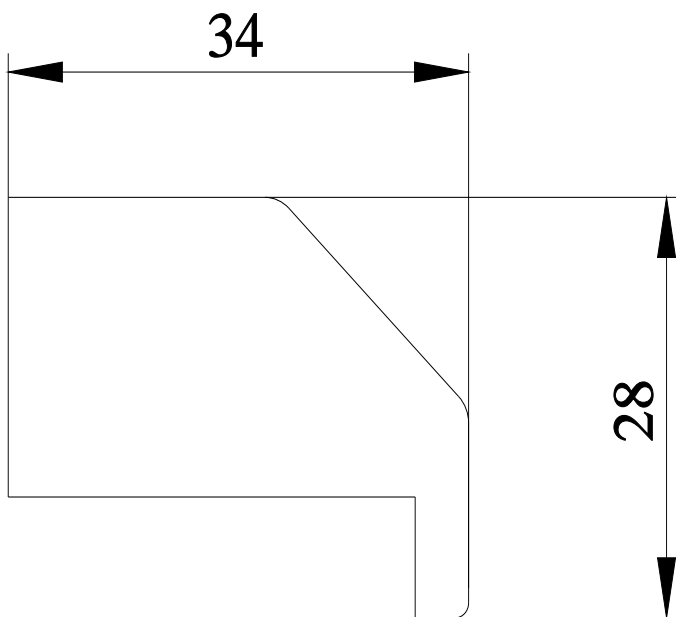
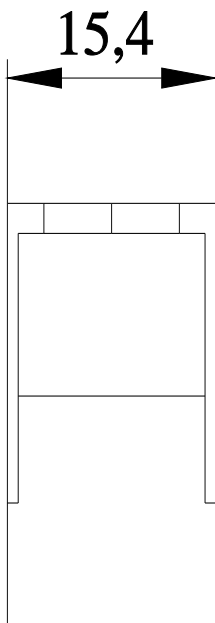
[http://www.automation.siemens.com/bilddb/cax\\_en.aspx?mlfb=3LD9221-2A](http://www.automation.siemens.com/bilddb/cax_en.aspx?mlfb=3LD9221-2A)

**CAX-Online-Generator**

<http://www.siemens.com/cax>

**Tender specifications**

<https://www.siemens.com/specifications>



---

last modified:

4/12/2025 