



PE-through terminal, Front installation, accessory for Load disconnector 3LD3

Model		
product brand name	SETRON	
product designation	PE through-type terminal	
design of the product	accessories for 3LD3 switch disconnectors	
Accessories		
accessories	front mounting	
AWG number as coded connectable conductor cross section		
• minimum	14	
• maximum	6	
tightening torque with screw-type terminals		
• minimum	3 N·m	
• maximum	3 N·m	
type of connectable conductor cross-sections for main contacts		
• finely stranded with core end processing	1x (2.515 mm ²)	
• solid or stranded	1x (2.5 ... 16 mm ²)	
Mechanical Design		
Net Weight	40 g	
Approvals Certificates		
General Product Approval	other	Environment



[Confirmation](#)



[Environmental Confirmations](#)

Environment

[Environmental Confirmations](#)

Further information

Information on the packaging
<https://support.industry.siemens.com/cs/ww/en/view/109813875>
 Information for data generation and storage
<https://support.industry.siemens.com/cs/ww/en/view/109995012>
 Information- and Downloadcenter (Catalogs, Brochures,...)
<http://www.siemens.com/lowvoltage/catalogs>
 Industry Mall (Online ordering system)

<https://mall.industry.siemens.com/mall/en/en/Catalog/product?mifb=3LD9340-3B>

Service&Support (Manuals, Certificates, Characteristics, FAQs,...)

<https://support.industry.siemens.com/cs/ww/en/ps/3LD9340-3B>

Image database (product images, 2D dimension drawings, 3D models, device circuit diagrams, ...)

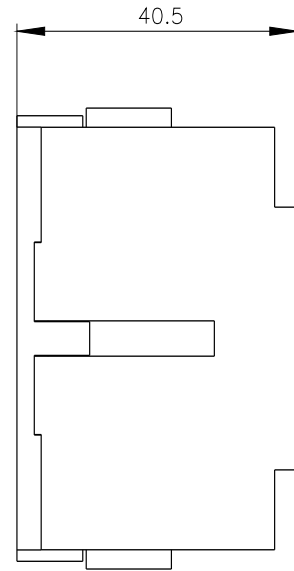
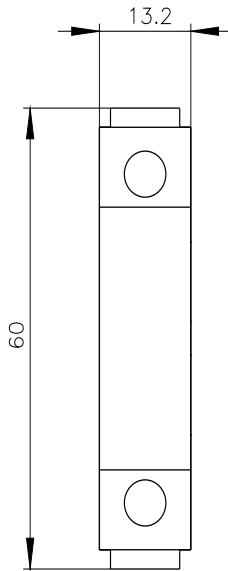
http://www.automation.siemens.com/bilddb/cax_en.aspx?mifb=3LD9340-3B

CAX-Online-Generator

<http://www.siemens.com/cax>

Tender specifications

<https://www.siemens.com/specifications>



last modified:

4/12/2025 

