



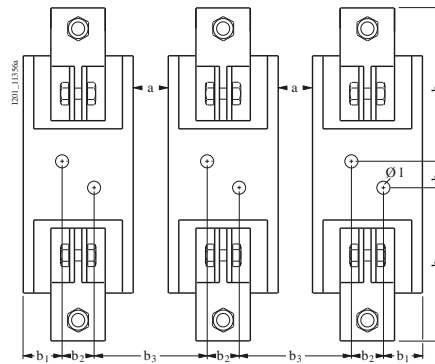




LV HRC fuse base Sz. 4, 1-pole 1250 A, 690 V flat terminal

Model			
product brand name	SENTRON		
product designation	LV HRC fuse base		
design of the product	LV HRC fuse base		
design of the thread of the connection screw	M12		
General technical data			
number of poles	1		
size of fuse system according to EN 60269-1	NH4		
utilization category	Without		
Supply voltage			
supply voltage			
• at AC	690 V		
• at DC	440 V		
Product details			
product component swivel-in mechanism	No		
maximum short-circuit current breaking capacity (I _{cu})			
• at AC rated value	120 kA		
• at DC rated value	25 kA		
Connections			
connectable conductor cross-section on box terminal			
• minimum	2.5 mm ²		
• maximum	50 mm ²		
tightening torque with screw-type terminals maximum	65 N·m		
type of electrical connection	With flat-type terminal		
• for main current circuit	flat connector		
Mechanical Design			
fastening method	fixed mounting		
fastening method bus-mounting	No		
Net Weight	3.107 kg		
Approvals Certificates			
General Product Approval	Test Certificates	Maritime application	other
	 EG-Konf.	Confirmation	Special Test Certificate
			
other	Railway	Environment	

Further information**Information on the packaging**<https://support.industry.siemens.com/cs/ww/en/view/109813875>**Information for data generation and storage**<https://support.industry.siemens.com/cs/ww/en/view/109995012>**Information- and Downloadcenter (Catalogs, Brochures,...)**<https://www.siemens.com/lowvoltage/catalogs>**Industry Mall (Online ordering system)**<https://mall.industry.siemens.com/mall/en/en/Catalog/product?mlfb=3NH3530>**Service&Support (Manuals, Certificates, Characteristics, FAQs,...)**<https://support.industry.siemens.com/cs/ww/en/ps/3NH3530>**Image database (product images, 2D dimension drawings, 3D models, device circuit diagrams, ...)**https://www.automation.siemens.com/bilddb/cax_en.aspx?mlfb=3NH3530**CAX-Online-Generator**<https://www.siemens.com/cax>**Tender specifications**<https://www.siemens.com/specifications>

Binägröße	Type	b ₁	b ₂	b ₃	h ₁	h ₂	Ø 1
4	3NH3 530	36	30	95	141	25	13

Hinweis: Diese MM-HR-Fuse werden ohne Aufsicht mit dem physischen Ferrauss ein Mindestabstand von ca. 0,25 m zu einem anderen einhalten.

last modified:

8/8/2025

