

set of link rails incl. set of connection screws for reversing contactor assemblies 3RT1.7 , infeed side, phase swapping



product brand name	SIRIUS
product category	Wiring modules, connectors and kits
product designation	Link rail set
design of the product	Reversing contactor assembly, top (phase reversal), size S12
product type designation	3RA19

General technical data	
size of contactor	S12
Substance Prohibittance (Date)	07/01/2006
Weight	1.565 kg
number of poles	3

Approvals Certificates		
General Product Approval	Maritime application	other



other	Environment
-------	-------------

[Confirmation](#)

[Environmental Confirmations](#)

Further information

Information on the packaging

<https://support.industry.siemens.com/cs/ww/en/view/109813875>

Information for data generation and storage

<https://support.industry.siemens.com/cs/ww/en/view/109995012>

Information- and Downloadcenter (Catalogs, Brochures,...)

<https://www.siemens.com/ic10>

Industry Mall (Online ordering system)

<https://mall.industry.siemens.com/mall/en/en/Catalog/product?mlfb=3RA1973-3D>

Cax online generator

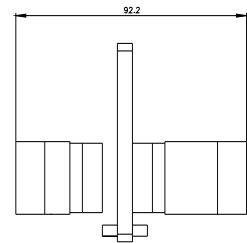
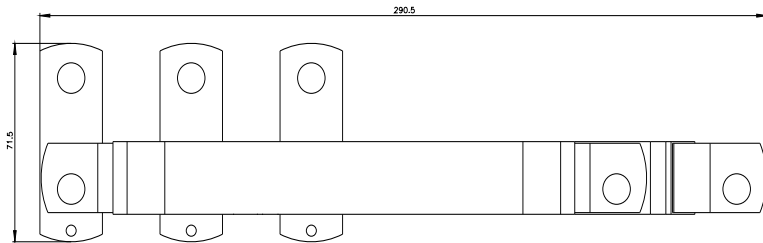
<https://support.automation.siemens.com/WW/CAXorder/default.aspx?lang=en&mlfb=3RA1973-3D>

Service&Support (Manuals, Certificates, Characteristics, FAQs,...)

<https://support.industry.siemens.com/cs/ww/en/ps/3RA1973-3D>

Image database (product images, 2D dimension drawings, 3D models, device circuit diagrams, EPLAN macros, ...)

https://www.automation.siemens.com/bilddb/cax_de.aspx?mlfb=3RA1973-3D&lang=en



last modified:

4/18/2025 