

Contactor assembly for star-delta (wye-delta) start AC-3, 22 kW/400 V ,24 V DC 3-pole, Size S0 Spring-type terminal electrical and mechanical interlock 3 NO + 3 NC integrated



|  |  |
|--|--|
| <b>product brand name</b>  | SIRIUS   |
| <b>product designation</b>   | Contactor assembly for star-delta (wye-delta) start  |
| <b>product type designation</b>  | 3RA24  |
| <b>manufacturer's article number</b>   |  |
| <ul style="list-style-type: none"> <li>• 1 of the supplied contactor</li> <li>• 2 of the supplied contactor</li> <li>• 3 of the supplied contactor</li> <li>• of the supplied RS assembly kit</li> <li>• of the supplied function module for wye-delta circuits</li> </ul> | <a href="#">3RT2027-2BB40</a><br><a href="#">3RT2027-2BB40</a><br><a href="#">3RT2026-2BB40</a><br><a href="#">3RA2923-2BB2</a><br><a href="#">3RA2816-0EW20</a> |
| <b>General technical data</b>  |  |
| <b>size of contactor</b>   | S0   |
| product extension auxiliary switch   | No   |
| <b>shock resistance at rectangular impulse</b>   |  |
| <ul style="list-style-type: none"> <li>• at AC</li> <li>• at DC</li> </ul>   | 8,3g / 5 ms, 5,3g / 10 ms<br>10g / 5 ms, 7,5g / 10 ms  |
| <b>shock resistance with sine pulse</b>  |  |
| <ul style="list-style-type: none"> <li>• at AC</li> <li>• at DC</li> </ul>   | 13,5g / 5 ms, 8,3g / 10 ms<br>15g / 5 ms, 10g / 10 ms  |
| <b>mechanical service life (operating cycles)</b>  |  |
| <ul style="list-style-type: none"> <li>• of contactor typical</li> <li>• of the contactor with added auxiliary switch block typical</li> </ul>   | 10 000 000<br>10 000 000   |
| <b>reference code according to IEC 81346-2</b>   | Q  |
| <b>Substance Prohibition (Date)</b>  | 10/01/2009   |
| <b>SVHC substance name</b>   | Lead - 7439-92-1<br>Lead monoxide (lead oxide) - 1317-36-8<br>6,6'-di-tert-butyl-2,2'-methylenedi-p-cresol - 119-47-1  |
| <b>Weight</b>  | 2.597 kg   |
| <b>Ambient conditions</b>  |  |
| installation altitude at height above sea level maximum  | 2 000 m  |
| <b>ambient temperature</b>   |  |
| <ul style="list-style-type: none"> <li>• during operation</li> <li>• during storage</li> </ul>   | -25 ... +60 °C<br>-55 ... +80 °C   |
| <b>Main circuit</b>  |  |
| <b>number of poles for main current circuit</b>  | 3  |
| <b>number of NO contacts for main contacts</b>   | 3  |
| <b>number of NC contacts for main contacts</b>   | 0  |
| <b>operating voltage</b>   |  |
| <ul style="list-style-type: none"> <li>• at AC-3 rated value maximum</li> </ul>  | 690 V  |
| <b>operational current</b>   |  |
| <ul style="list-style-type: none"> <li>• at AC-3</li> <li>— at 400 V rated value</li> </ul>  | 50 A   |

|  |   |
|--|---|
| <b>operating power</b>   |   |
| <ul style="list-style-type: none"> <li>● at AC-3 <ul style="list-style-type: none"> <li>— at 400 V rated value</li> <li>— at 500 V rated value</li> <li>— at 690 V rated value</li> </ul> </li> </ul>  | <p>22 kW</p> <p>19 kW</p> <p>19 kW</p>  |
| <b>operating frequency</b>   |   |
| <ul style="list-style-type: none"> <li>● at AC-3 maximum</li> </ul>  | 1 000 1/h   |
| <b>Control circuit/ Control</b>  |   |
| <b>type of voltage of the control supply voltage</b>   | DC  |
| <b>control supply voltage 1 at DC rated value</b>  | 24 V  |
| <b>closing power of magnet coil at DC</b>  | 13.8 W  |
| <b>holding power of magnet coil at DC</b>  | 13.8 W  |
| <b>Auxiliary circuit</b>   |   |
| <b>number of NC contacts for auxiliary contacts</b>  |   |
| <ul style="list-style-type: none"> <li>● instantaneous contact</li> </ul>  | 3   |
| <b>number of NO contacts for auxiliary contacts</b>  |   |
| <ul style="list-style-type: none"> <li>● instantaneous contact</li> </ul>  | 3   |
| <b>contact reliability of auxiliary contacts</b>   | < 1 error per 100 million operating cycles  |
| <b>UL/CSA ratings</b>  |   |
| <b>contact rating of auxiliary contacts according to UL</b>  | A600 / Q600   |
| <b>Short-circuit protection</b>  |   |
| <b>design of the fuse link</b>   |   |
| <ul style="list-style-type: none"> <li>● for short-circuit protection of the main circuit <ul style="list-style-type: none"> <li>— with type of coordination 1 required</li> <li>— with type of coordination 2 required</li> </ul> </li> <li>● for short-circuit protection of the auxiliary switch required</li> </ul>  | <p>gG NH 3NA, DIAZED 5SB, NEOZED 5SE: 125 A</p> <p>gG NH 3NA, DIAZED 5SB, NEOZED 5SE: 50 A</p> <p>fuse gG: 10 A</p>   |
| <b>Installation/ mounting/ dimensions</b>  |   |
| <b>mounting position</b>   | +/-180° rotation possible on vertical mounting surface; can be tilted forward and backward by +/- 22.5° on vertical mounting surface  |
| <b>fastening method</b>  | screw and snap-on mounting onto 35 mm DIN rail  |
| <b>height</b>  | 114 mm  |
| <b>width</b>   | 135 mm  |
| <b>depth</b>   | 181 mm  |
| <b>required spacing</b>  |   |
| <ul style="list-style-type: none"> <li>● with side-by-side mounting <ul style="list-style-type: none"> <li>— forwards</li> <li>— backwards</li> <li>— upwards</li> <li>— downwards</li> <li>— at the side</li> </ul> </li> <li>● for grounded parts <ul style="list-style-type: none"> <li>— forwards</li> <li>— backwards</li> <li>— upwards</li> <li>— at the side</li> <li>— downwards</li> </ul> </li> <li>● for live parts <ul style="list-style-type: none"> <li>— forwards</li> <li>— backwards</li> <li>— upwards</li> <li>— downwards</li> <li>— at the side</li> </ul> </li> </ul> | <p>6 mm</p> <p>0 mm</p> <p>6 mm</p> <p>6 mm</p> <p>6 mm</p> <p>6 mm</p> <p>6 mm</p> <p>0 mm</p> <p>6 mm</p> <p>6 mm</p> <p>6 mm</p> <p>6 mm</p> <p>0 mm</p> <p>6 mm</p> <p>6 mm</p> <p>6 mm</p> |
| <b>Connections/ Terminals</b>  |   |
| <b>type of electrical connection</b>   |   |
| <ul style="list-style-type: none"> <li>● for main current circuit</li> <li>● for auxiliary and control circuit</li> <li>● at contactor for auxiliary contacts</li> <li>● of magnet coil</li> </ul>   | <p>spring-loaded terminals</p> <p>spring-loaded terminals</p> <p>Spring-type terminals</p> <p>Spring-type terminals</p>   |
| <b>type of connectable conductor cross-sections for main contacts</b>  |   |
| <ul style="list-style-type: none"> <li>● solid</li> <li>● solid or stranded</li> </ul>   | <p>2x (1 ... 10 mm<sup>2</sup>)</p> <p>2x (1 ... 10 mm<sup>2</sup>)</p>   |

|   |  |
|---|--|
| <ul style="list-style-type: none"> <li>finely stranded with core end processing</li> <li>finely stranded without core end processing</li> </ul>   | <p>2x (1 ... 6 mm<sup>2</sup>)</p> <p>2x (1 ... 6 mm<sup>2</sup>)</p>  |
| <b>type of connectable conductor cross-sections</b> <ul style="list-style-type: none"> <li>for auxiliary contacts <ul style="list-style-type: none"> <li>— solid or stranded</li> <li>— finely stranded with core end processing</li> <li>— finely stranded without core end processing</li> </ul> </li> <li>for AWG cables for auxiliary contacts</li> </ul> | <p>2x (0.5 ... 2.5 mm<sup>2</sup>)</p> <p>2x (0.5 ... 1.5 mm<sup>2</sup>)</p> <p>2x (0.5 ... 1.5 mm<sup>2</sup>)</p> <p>2x (20 ... 14)</p> |






**Safety related data**

|   |  |
|---|--|
| product function suitable for safety function           | Yes  |
| <b>Electrical Safety</b>                                |  |
| protection class IP on the front according to IEC 60529 | IP20   |
| touch protection on the front according to IEC 60529    | finger-safe, for vertical contact from the front |


**Communication/ Protocol**

|   |    |
|---|----|
| product function bus communication                      | No |
| protocol is supported AS-Interface protocol             | No |
| product function control circuit interface with IO link | No |

**Approvals Certificates**

|   |  |   |
|---|--|---|
| General Product Approval  | Test Certificates                        | Maritime application  |
|    | <a href="#">Special Test Certificate</a> |   |

**Maritime application** other

|   |   |
|---|---|
|      |  |
|---|---|

**other**    **Railway**    **Dangerous goods**    **Environment**

|                              |  |                                       |   |
|------------------------------|--|---------------------------------------|---|
| <a href="#">Confirmation</a> | <a href="#">Special Test Certificate</a> | <a href="#">Transport Information</a> | <a href="#">Environmental Confirmations</a> |
|------------------------------|--|---------------------------------------|---|

**Further information**

**Information on the packaging**  
<https://support.industry.siemens.com/cs/ww/en/view/109813875>

**Information for data generation and storage**  
<https://support.industry.siemens.com/cs/ww/en/view/109995012>

**Information- and Downloadcenter (Catalogs, Brochures,...)**  
<https://www.siemens.com/ic10>

**Industry Mall (Online ordering system)**  
<https://mall.industry.siemens.com/mall/en/en/Catalog/product?mlfb=3RA2426-8XF32-2BB4>

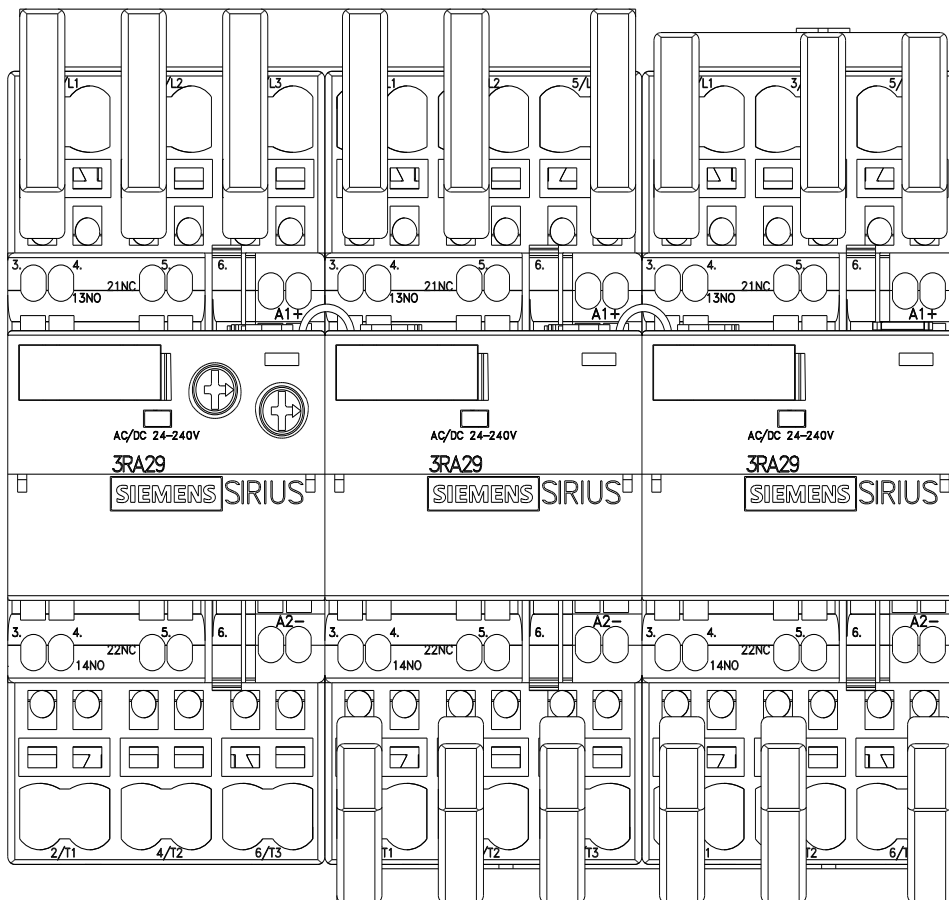
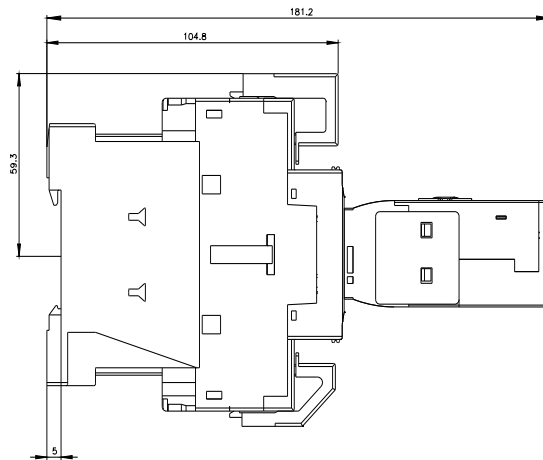
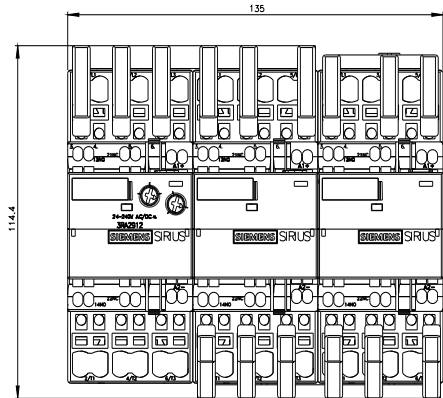
**Cax online generator**  
<https://support.automation.siemens.com/WW/CAXorder/default.aspx?lang=en&mlfb=3RA2426-8XF32-2BB4>

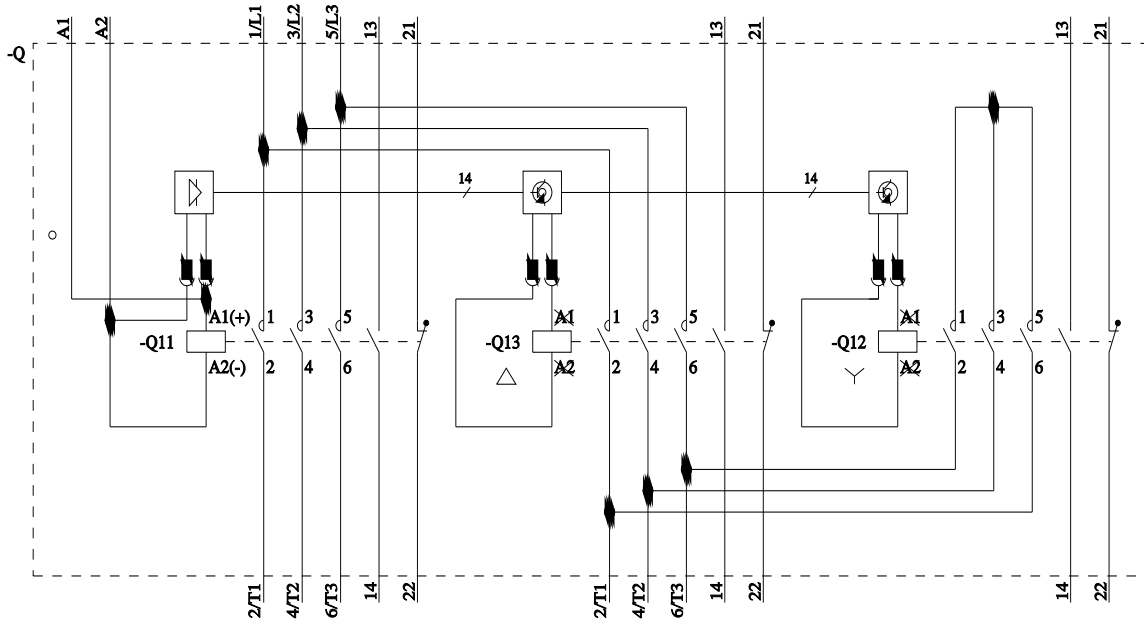
**Service&Support (Manuals, Certificates, Characteristics, FAQs,...)**  
<https://support.industry.siemens.com/cs/ww/en/ps/3RA2426-8XF32-2BB4>

**Image database (product images, 2D dimension drawings, 3D models, device circuit diagrams, EPLAN macros, ...)**  
[https://www.automation.siemens.com/bilddb/cax\\_de.aspx?mlfb=3RA2426-8XF32-2BB4&lang=en](https://www.automation.siemens.com/bilddb/cax_de.aspx?mlfb=3RA2426-8XF32-2BB4&lang=en)

**Characteristic: Tripping characteristics, I<sup>2</sup>t, Let-through current**  
<https://support.industry.siemens.com/cs/ww/en/ps/3RA2426-8XF32-2BB4/char>

**Further characteristics (e.g. electrical endurance, switching frequency)**  
<https://www.automation.siemens.com/bilddb/index.aspx?view=Search&mlfb=3RA2426-8XF32-2BB4&objecttype=14&gridview=view1>





last modified:

8/8/2025 