



busbar adapter Size S3 for mechanical mounting of circuit breaker and contactor  
Can be snapped onto standard mounting rail or for screw mounting (multi-unit packaging)

product brand name	SIRIUS
product category	DIN-rail adapter
product designation	DIN rail adapter
product type designation	3RA29

General technical data	
material	plastic
certificate of suitability	CE / UL / CSA
size of the circuit-breaker	S3
size of contactor	S3
Substance Prohibition (Date)	07/01/2006
Weight	0.258 kg

Installation/ mounting/ dimensions	
fastening method	screw and snap-on mounting onto 35 mm DIN rail
height	332.5 mm
width	70 mm
depth	23.3 mm

Approvals Certificates		
General Product Approval	Test Certificates	Maritime application



[Special Test Certificate](#)



Maritime application					
----------------------	--	--	--	--	--



other	Railway	Environment
-------	---------	-------------



[Confirmation](#)

[Special Test Certificate](#)

[Environmental Confirmations](#)

Further information
---------------------

[Information on the packaging](#)

<https://support.industry.siemens.com/cs/ww/en/view/109813875>

Information for data generation and storage

<https://support.industry.siemens.com/cs/ww/en/view/109995012>

Information- and Downloadcenter (Catalogs, Brochures,...)

<https://www.siemens.com/ic10>

Industry Mall (Online ordering system)

<https://mall.industry.siemens.com/mall/en/en/Catalog/product?mlfb=3RA2942-1A>

Cax online generator

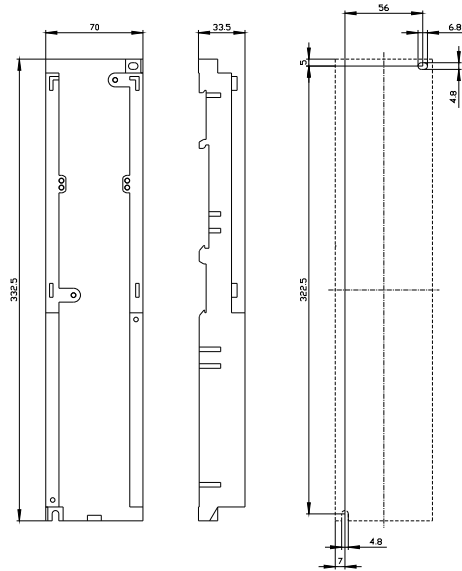
<https://support.automation.siemens.com/WW/CAXorder/default.aspx?lang=en&mlfb=3RA2942-1A>

Service&Support (Manuals, Certificates, Characteristics, FAQs,...)

<https://support.industry.siemens.com/cs/ww/en/ps/3RA2942-1A>

Image database (product images, 2D dimension drawings, 3D models, device circuit diagrams, EPLAN macros, ...)

[https://www.automation.siemens.com/bilddb/cax\\_de.aspx?mlfb=3RA2942-1A&lang=en](https://www.automation.siemens.com/bilddb/cax_de.aspx?mlfb=3RA2942-1A&lang=en)



last modified:

10/22/2025 