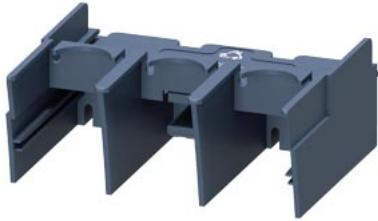


Terminal covers (2 units) for 3-phase infeed 50/70 mm<sup>2</sup> 3RA6813-8AB/AC



General technical data			
product brand name		SIRIUS	
product designation		Terminal cover screw-type infeeds	
degree of pollution		3	
installation altitude at height above sea level maximum	m	2 000	
ambient temperature			
• during transport	°C	-55 ... +80	
• during storage	°C	-55 ... +80	
• during operation	°C	-20 ... +60	
vibration resistance		f = 4 to 5.8 Hz; d = 15 mm; f = 5.8 to 500 Hz; a = 2 m / s <sup>2</sup> 10 cycles	
shock resistance		Semi-sinusoidal a = 6 m/s <sup>2</sup> at 10 ms; 3 pos. and 3 neg. Shock in all axes	
Installation/ mounting/ dimensions			
fastening method		snap-on mounting	
width	mm	70	
height	mm	60	
depth	mm	28	
Certificates/ approvals			
General Product Approval	EMV	Test Certificates	other



[Type Test Certificates/Test Report](#)



other	Environment
-------	-------------

[Confirmation](#)

[Environmental Confirmations](#)

### Further information

- Information on the packaging  
<https://support.industry.siemens.com/cs/ww/en/view/109813875>
- Information for data generation and storage  
<https://support.industry.siemens.com/cs/ww/en/view/109995012>
- Information- and Downloadcenter (Catalogs, Brochures,...)  
<https://www.siemens.com/ic10>
- Industry Mall (Online ordering system)  
<https://mall.industry.siemens.com/mall/en/en/Catalog/product?mlfb=3RA6880-3AB>

Cax online generator

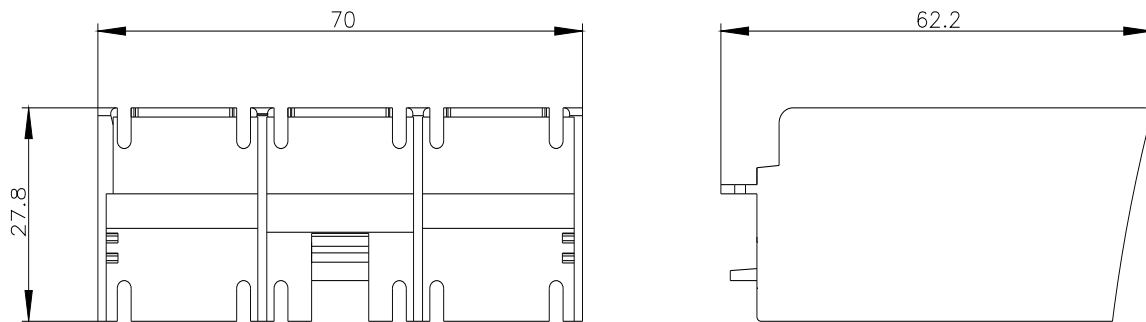
<https://support.automation.siemens.com/WW/CAXorder/default.aspx?lang=en&mlfb=3RA6880-3AB>

Service&Support (Manuals, Certificates, Characteristics, FAQs,...)

<https://support.industry.siemens.com/cs/ww/en/ps/3RA6880-3AB>

Image database (product images, 2D dimension drawings, 3D models, device circuit diagrams, EPLAN macros, ...)

[https://www.automation.siemens.com/bilddb/cax\\_de.aspx?mlfb=3RA6880-3AB&lang=en](https://www.automation.siemens.com/bilddb/cax_de.aspx?mlfb=3RA6880-3AB&lang=en)



---

last modified:

4/2/2025 