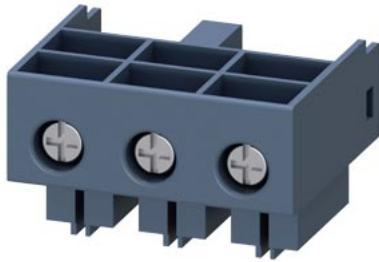


Main circuit terminals (input and output side) Connection main circuit: screw terminal 2 main circuit terminals per package (1 x input side 1 x output side differ)



General technical data		
product brand name		SIRIUS
product designation		main circuit terminals (ingoing as well as outgoing)
protection class IP on the front according to IEC 60529		IP20
touch protection on the front according to IEC 60529		Finger-safe, for vertical contact
relative humidity during operation	%	10 ... 90
ambient temperature		
• during transport	°C	-55 ... +80
• during storage	°C	-55 ... +80
• during operation	°C	-20 ... +60
reference code according to EN 61346-2		X
Installation/ mounting/ dimensions		
width	mm	45
height	mm	32
depth	mm	30
Connections/ Terminals		
stripped length	mm	10
type of electrical connection		
• for main current circuit		screw-type terminals
• for auxiliary and control circuit		screw-type terminals
type of connectable conductor cross-sections		
• for main contacts		
— solid		up to 12 A: 2x (1.5 ... 2.5 mm ²), 2x (2.5 ... 6 mm ²), up to 32 A: 2x (2.5 ... 6 mm ²)
— finely stranded with core end processing		up to 12 A: 2x (1.5 ... 2.5 mm ²), 2x (2.5 ... 6 mm ²) up to 32 A: 2x (2.5 ... 6 mm ²)
• for AWG cables for main contacts		up to 12 A: 2x (16 ... 14), 2x (14 ... 10), 1x 8, up to 32 A: 2x (14 ... 10), 1x 8
design of screw-type connection for auxiliary contacts		M6
tightening torque for auxiliary contacts with screw-type terminals	N·m	2 ... 2.5
Certificates/ approvals		
certificate of suitability		IEC / EN 60947-6-2
General Product Approval		EMV Maritime application



other

Environment



[Confirmation](#)

[Environmental Con-
firmations](#)

Further information

Information on the packaging

<https://support.industry.siemens.com/cs/ww/en/view/109813875>

Information for data generation and storage

<https://support.industry.siemens.com/cs/ww/en/view/109995012>

Information- and Downloadcenter (Catalogs, Brochures,...)

<https://www.siemens.com/ic10>

Industry Mall (Online ordering system)

<https://mall.industry.siemens.com/mall/en/en/Catalog/product?mlfb=3RA6920-1A>

Cax online generator

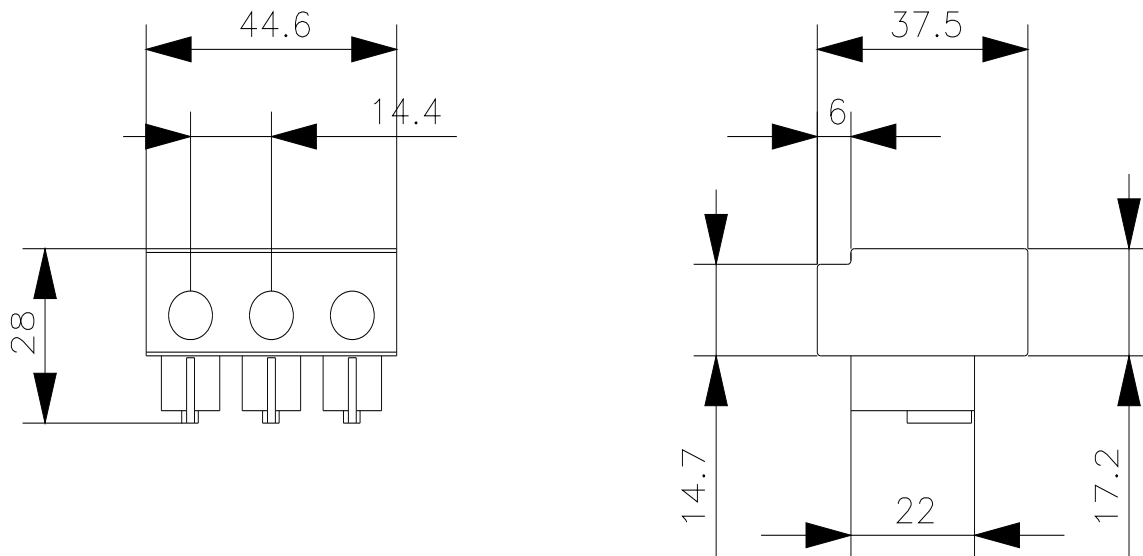
<https://support.automation.siemens.com/WW/CAXorder/default.aspx?lang=en&mlfb=3RA6920-1A>

Service&Support (Manuals, Certificates, Characteristics, FAQs,...)

<https://support.industry.siemens.com/cs/ww/en/ps/3RA6920-1A>

Image database (product images, 2D dimension drawings, 3D models, device circuit diagrams, EPLAN macros, ...)

https://www.automation.siemens.com/bilddb/cax_de.aspx?mlfb=3RA6920-1A&lang=en



last modified:

4/2/2025