





Overload relay 1...4 A Electronic For motor protection Size S00, Class 5...30  
 Contactor mounting Main circuit: Screw Auxiliary circuit: Screw Manual-Automatic-Reset Internal ground fault detection

<b>product brand name</b>	SIRIUS
<b>product designation</b>	solid-state overload relay
<b>product type designation</b>	3RB3
<b>General technical data</b>	
<b>size of overload relay</b>	S00
<b>size of contactor can be combined company-specific</b>	S00
power loss [W] for rated value of the current at AC in hot operating state	0.1 W
• per pole	0.03 W
insulation voltage with degree of pollution 3 at AC rated value	690 V
<b>surge voltage resistance rated value</b>	6 kV
<b>maximum permissible voltage for protective separation</b>	
• in networks with ungrounded star point between auxiliary and auxiliary circuit	300 V
• in networks with grounded star point between auxiliary and auxiliary circuit	300 V
• in networks with ungrounded star point between main and auxiliary circuit	600 V
• in networks with grounded star point between main and auxiliary circuit	690 V
<b>shock resistance</b>	15g / 11 ms
• according to IEC 60068-2-27	15g / 11 ms; Signaling contact 97 / 98 in position "Tripped": 9g / 11 ms
<b>vibration resistance</b>	1-6 Hz, 15 mm; 6-500 Hz, 20 m/s <sup>2</sup> ; 10 cycles
<b>thermal current</b>	4 A
<b>recovery time after overload trip</b>	
• with automatic reset typical	3 min
• with remote-reset	0 min
• with manual reset	0 min
<b>reference code according to IEC 81346-2</b>	F
<b>Substance Prohibition (Date)</b>	10/01/2009
<b>SVHC substance name</b>	Lead - 7439-92-1 Lead monoxide (lead oxide) - 1317-36-8 2,2',6,6'-tetrabromo-4,4'-isopropylidenediphenol - 79-94-7 6,6'-di-tert-butyl-2,2'-methylene-di-p-cresol - 119-47-1
<b>Weight</b>	0.225 kg
<b>Ambient conditions</b>	
installation altitude at height above sea level maximum	2 000 m
<b>ambient temperature</b>	
• during operation	-25 ... +60 °C
• during storage	-40 ... +80 °C
• during transport	-40 ... +80 °C
<b>temperature compensation</b>	-25 ... +60 °C
relative humidity during operation	10 ... 95 %

Main circuit	
number of poles for main current circuit	3
adjustable current response value current of the current-dependent overload release	1 ... 4 A
operating voltage <ul style="list-style-type: none"> <li>rated value</li> <li>for remote-reset function at DC</li> <li>at AC-3e rated value maximum</li> </ul>	690 V 24 V 690 V
operating frequency rated value	50 ... 60 Hz
operational current rated value	4 A
operational current at AC-3e at 400 V rated value	4 A
operating power <ul style="list-style-type: none"> <li>for 3-phase motors at 400 V at 50 Hz</li> <li>for AC motors at 500 V at 50 Hz</li> <li>for AC motors at 690 V at 50 Hz</li> </ul>	0.37 ... 1.5 kW 0.37 ... 2.2 kW 0.55 ... 3 kW
Auxiliary circuit	
design of the auxiliary switch	integrated
number of NC contacts for auxiliary contacts <ul style="list-style-type: none"> <li>note</li> </ul>	1 for contactor disconnection
number of NO contacts for auxiliary contacts <ul style="list-style-type: none"> <li>note</li> </ul>	1 for message "tripped"
number of CO contacts for auxiliary contacts	0
operational current of auxiliary contacts at AC-15 <ul style="list-style-type: none"> <li>at 24 V</li> <li>at 110 V</li> <li>at 120 V</li> <li>at 125 V</li> <li>at 230 V</li> </ul>	4 A 4 A 4 A 4 A 3 A
operational current of auxiliary contacts at DC-13 <ul style="list-style-type: none"> <li>at 24 V</li> <li>at 60 V</li> <li>at 110 V</li> <li>at 125 V</li> <li>at 220 V</li> </ul>	2 A 0.55 A 0.3 A 0.3 A 0.11 A
Protective and monitoring functions	
trip class	CLASS 5E, 10E, 20E and 30E adjustable
design of the overload release	electronic
response value current of the grounding protection minimum	0.75 x I <sub>Motor</sub>
response time of the grounding protection in settled state	1 000 ms
operating range of the grounding protection relating to current set value <ul style="list-style-type: none"> <li>minimum</li> <li>maximum</li> </ul>	I <sub>Motor</sub> > lower current setting value I <sub>Motor</sub> < upper current setting value x 3.5
UL/CSA ratings	
full-load current (FLA) for 3-phase AC motor <ul style="list-style-type: none"> <li>at 480 V rated value</li> <li>at 600 V rated value</li> </ul>	4 A 4 A
contact rating of auxiliary contacts according to UL	B600 / R300
Short-circuit protection	
design of the fuse link <ul style="list-style-type: none"> <li>for short-circuit protection of the main circuit <ul style="list-style-type: none"> <li>with type of coordination 1 required</li> <li>with type of coordination 2 required</li> </ul> </li> <li>for short-circuit protection of the auxiliary switch required</li> </ul>	gG: 35 A, RK5: 15 A gG: 20 A fuse gG: 6 A
Installation/ mounting/ dimensions	
mounting position	any
fastening method	Contactors mounting
height	79 mm
width	45 mm
depth	73 mm
Connections/ Terminals	

<b>product component removable terminal for auxiliary and control circuit</b>	Yes
<b>type of electrical connection</b> <ul style="list-style-type: none"> <li>• for main current circuit</li> <li>• for auxiliary and control circuit</li> </ul>	screw-type terminals screw-type terminals
<b>arrangement of electrical connectors for main current circuit</b>	Top and bottom
type of connectable conductor cross-sections for main contacts <ul style="list-style-type: none"> <li>• solid</li> <li>• solid or stranded</li> <li>• finely stranded with core end processing</li> </ul>	1x (0.5 ... 4 mm <sup>2</sup> ), 2x (0.5 ... 1.5 mm <sup>2</sup> ), 2x (0.75 ... 4 mm <sup>2</sup> ) 1x (0,5 ... 4 mm <sup>2</sup> ), 2x (0,5 ... 1,5 mm <sup>2</sup> ), 2x (0,75 ... 4 mm <sup>2</sup> ) 1x (0.5 ... 2.5 mm <sup>2</sup> ), 2x (0.5 ... 2.5 mm <sup>2</sup> )
<b>type of connectable conductor cross-sections</b> <ul style="list-style-type: none"> <li>• for auxiliary contacts <ul style="list-style-type: none"> <li>— solid</li> <li>— solid or stranded</li> <li>— finely stranded with core end processing</li> </ul> </li> <li>• for AWG cables for auxiliary contacts</li> </ul>	1x (0.5 ... 4 mm <sup>2</sup> ), 2x (0.5 ... 2.5 mm <sup>2</sup> ) 1x (0,5 ... 4 mm <sup>2</sup> ), 2x (0,5 ... 2,5 mm <sup>2</sup> ) 1x (0.5 ... 2.5 mm <sup>2</sup> ), 2x (0.5 ... 1.5 mm <sup>2</sup> ) 1x (20 ... 14), 2x (20 ... 14)
<b>tightening torque</b> <ul style="list-style-type: none"> <li>• for main contacts with screw-type terminals</li> <li>• for auxiliary contacts with screw-type terminals</li> </ul>	0.8 ... 1.2 N·m 0.8 ... 1.2 N·m
<b>design of screwdriver shaft</b>	Diameter 5 to 6 mm
<b>size of the screwdriver tip</b>	Pozidriv PZ 2
<b>design of the thread of the connection screw</b> <ul style="list-style-type: none"> <li>• for main contacts</li> <li>• of the auxiliary and control contacts</li> </ul>	M3 M3
<b>Electrical Safety</b>	
<b>protection class IP on the front according to IEC 60529</b>	IP20
<b>touch protection on the front according to IEC 60529</b>	finger-safe, for vertical contact from the front
<b>Communication/ Protocol</b>	
<b>type of voltage supply via input/output link master</b>	No
<b>Electromagnetic compatibility</b>	
<b>conducted interference</b> <ul style="list-style-type: none"> <li>• due to burst according to IEC 61000-4-4</li> <li>• due to conductor-earth surge according to IEC 61000-4-5</li> <li>• due to conductor-conductor surge according to IEC 61000-4-5</li> <li>• due to high-frequency radiation according to IEC 61000-4-6</li> </ul>	2 kV (power ports), 1 kV (signal ports) corresponds to degree of severity 3 2 kV (line to earth) corresponds to degree of severity 3 1 kV (line to line) corresponds to degree of severity 3  10 V in frequency range 0.15 to 80 MHz, modulation 80 % AM with 1 kHz
<b>field-based interference according to IEC 61000-4-3</b>	10 V/m
<b>electrostatic discharge according to IEC 61000-4-2</b>	6 kV contact discharge / 8 kV air discharge
<b>Display</b>	
display version for switching status	Slide switch
<b>Approvals Certificates</b>	
<b>General Product Approval</b>	EMV



<b>EMV</b>	<b>For use in hazardous locations</b>	<b>Test Certificates</b>	<b>Maritime application</b>
<a href="#">KC</a>		<a href="#">Type Test Certificates/Test Report</a>	<a href="#">Special Test Certificate</a>
			
			
<b>Maritime application</b>			<b>other</b>



[Confirmation](#)

## Environment

[Environmental Con-  
firmations](#)

## Further information

Information on the packaging

<https://support.industry.siemens.com/cs/ww/en/view/109813875>

Information for data generation and storage

<https://support.industry.siemens.com/cs/ww/en/view/109995012>

Information- and Downloadcenter (Catalogs, Brochures,...)

<https://www.siemens.com/ic10>

Industry Mall (Online ordering system)

<https://mall.industry.siemens.com/mall/en/en/Catalog/product?mlfb=3RB3113-4PB0>

Cax online generator

<https://support.automation.siemens.com/WW/CAXorder/default.aspx?lang=en&mlfb=3RB3113-4PB0>

Service&Support (Manuals, Certificates, Characteristics, FAQs,...)

<https://support.industry.siemens.com/cs/ww/en/ps/3RB3113-4PB0>

Image database (product images, 2D dimension drawings, 3D models, device circuit diagrams, EPLAN macros, ...)

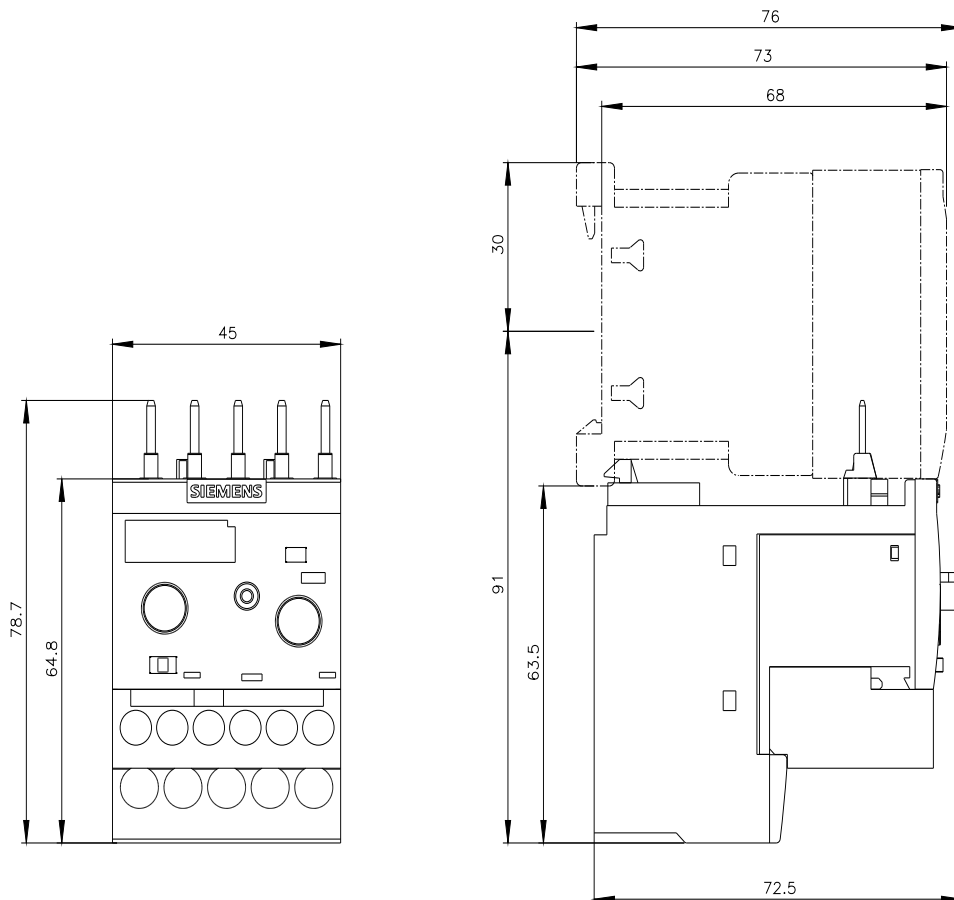
[https://www.automation.siemens.com/bilddb/cax\\_de.aspx?mlfb=3RB3113-4PB0&lang=en](https://www.automation.siemens.com/bilddb/cax_de.aspx?mlfb=3RB3113-4PB0&lang=en)

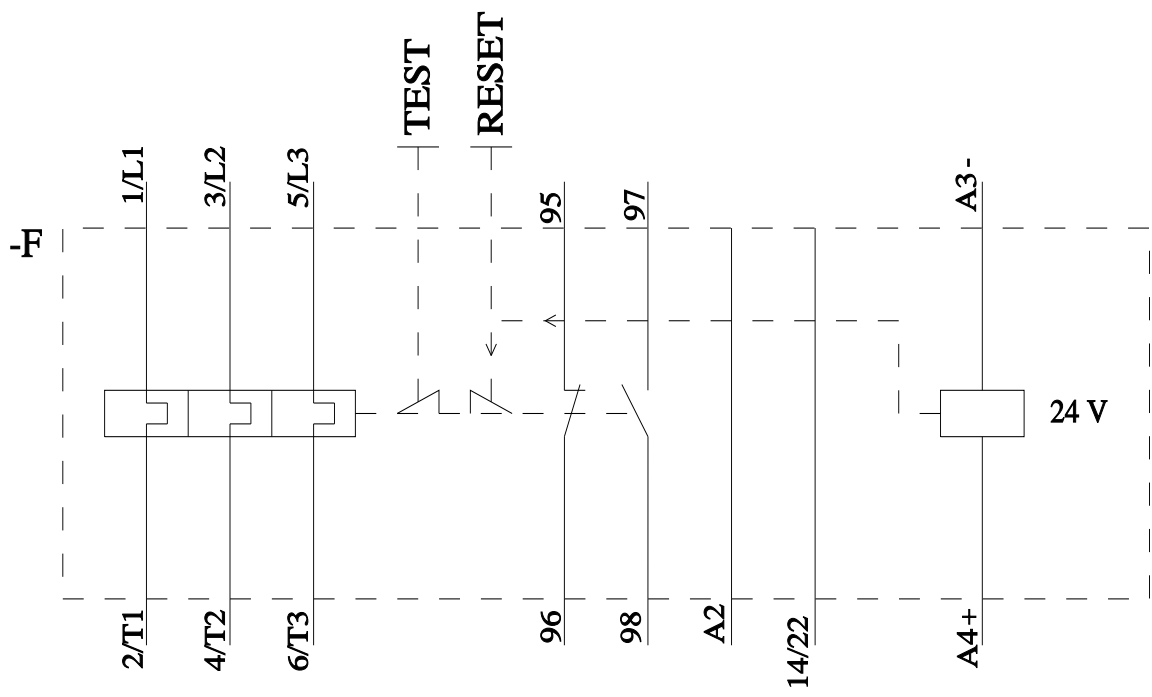
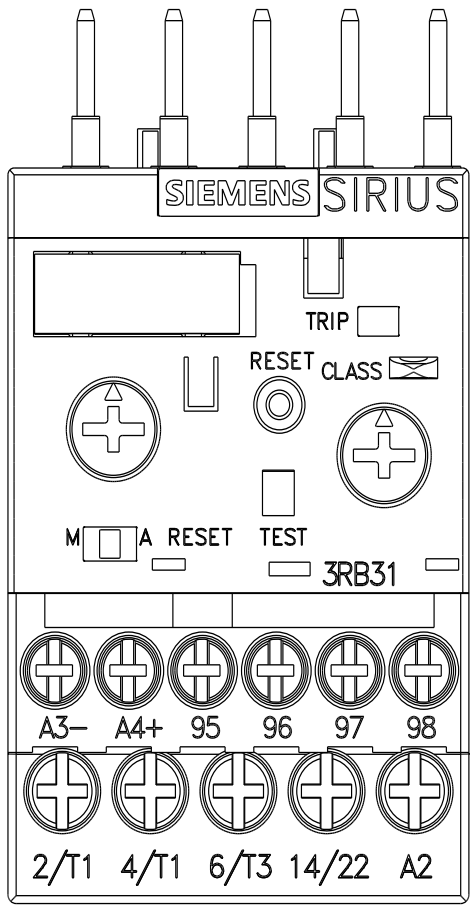
Characteristic: Tripping characteristics, I<sup>2</sup>t, Let-through current

<https://support.industry.siemens.com/cs/ww/en/ps/3RB3113-4PB0/char>

Further characteristics (e.g. electrical endurance, switching frequency)

<https://www.automation.siemens.com/bilddb/index.aspx?view=Search&mlfb=3RB3113-4PB0&objecttype=14&gridview=view1>





last modified:

4/2/2025 ↻