



Contactor, AC-1, 275 A/400 V/40 °C, S10, 4-pole, 24-60 V AC, 20-60 V DC, 2 NO+2 NC, Connection rail/ screw terminal

|                                                                               |                |
|-------------------------------------------------------------------------------|----------------|
| <b>product brand name</b>                                                     | SIRIUS         |
| <b>product designation</b>                                                    | Contactor      |
| <b>product type designation</b>                                               | 3RT13          |
| <b>General technical data</b>                                                 |                |
| <b>size of contactor</b>                                                      | S10            |
| <b>product extension</b>                                                      |                |
| • function module for communication                                           | No             |
| • auxiliary switch                                                            | Yes            |
| <b>power loss [W] for rated value of the current</b>                          |                |
| • at AC in hot operating state                                                | 60 W           |
| • at AC in hot operating state per pole                                       | 15 W           |
| • without load current share typical                                          | 2.5 W          |
| <b>type of calculation of power loss depending on pole</b>                    | quadratic      |
| <b>insulation voltage</b>                                                     |                |
| • of main circuit with degree of pollution 3 rated value                      | 1 000 V        |
| • of the auxiliary and control circuit with degree of pollution 3 rated value | 690 V          |
| <b>surge voltage resistance</b>                                               |                |
| • of main circuit rated value                                                 | 8 kV           |
| • of auxiliary circuit rated value                                            | 6 kV           |
| <b>reference code according to IEC 81346-2</b>                                | Q              |
| <b>Substance Prohibitance (Date)</b>                                          | 03/27/2017     |
| <b>Weight</b>                                                                 | 4.04 kg        |
| <b>Ambient conditions</b>                                                     |                |
| installation altitude at height above sea level maximum                       | 2 000 m        |
| <b>ambient temperature</b>                                                    |                |
| • during operation                                                            | -40 ... +60 °C |
| • during storage                                                              | -40 ... +70 °C |
| <b>relative humidity minimum</b>                                              | 10 %           |
| <b>relative humidity at 55 °C according to IEC 60068-2-30 maximum</b>         | 95 %           |
| <b>Main circuit</b>                                                           |                |
| <b>number of poles for main current circuit</b>                               | 4              |
| <b>number of NO contacts for main contacts</b>                                | 4              |
| <b>type of voltage for main current circuit</b>                               | AC             |
| <b>operational current</b>                                                    |                |
| • at AC-1 at 400 V at ambient temperature 40 °C rated value                   | 275 A          |
| • at AC-1<br>— up to 690 V at ambient temperature 40 °C rated value           | 275 A          |

|                                                                                       |                     |
|---------------------------------------------------------------------------------------|---------------------|
| — up to 690 V at ambient temperature 60 °C rated value                                | 250 A               |
| — up to 1000 V at ambient temperature 40 °C rated value                               | 250 A               |
| — up to 1000 V at ambient temperature 60 °C rated value                               | 225 A               |
| ● at AC-3                                                                             |                     |
| — at 400 V rated value                                                                | 190 A               |
| minimum cross-section in main circuit at maximum AC-1 rated value                     | 150 mm <sup>2</sup> |
| <b>operating power</b>                                                                |                     |
| ● at AC-3 at 400 V rated value                                                        | 90 kW               |
| <b>no-load switching frequency</b>                                                    |                     |
| ● at AC                                                                               | 300 1/h             |
| ● at DC                                                                               | 300 1/h             |
| <b>Control circuit/ Control</b>                                                       |                     |
| <b>type of voltage</b>                                                                | AC                  |
| <b>type of voltage of the control supply voltage</b>                                  | AC/DC               |
| <b>control supply voltage at AC</b>                                                   |                     |
| ● at 50 Hz rated value                                                                | 24 ... 60 V         |
| ● at 60 Hz rated value                                                                | 24 ... 60 V         |
| <b>control supply voltage at DC rated value</b>                                       | 20 ... 60 V         |
| <b>operating range factor control supply voltage rated value of magnet coil at DC</b> |                     |
| ● initial value                                                                       | 0.8                 |
| ● full-scale value                                                                    | 1.1                 |
| <b>operating range factor control supply voltage rated value of magnet coil at AC</b> |                     |
| ● at 50 Hz                                                                            | 0.85 ... 1.1        |
| ● at 60 Hz                                                                            | 0.85 ... 1.1        |
| <b>design of the surge suppressor</b>                                                 | with varistor       |
| <b>apparent pick-up power of magnet coil at AC</b>                                    |                     |
| ● at 50 Hz                                                                            | 165 VA              |
| ● at 60 Hz                                                                            | 165 VA              |
| <b>apparent holding power of magnet coil at AC</b>                                    |                     |
| ● at 50 Hz                                                                            | 6 VA                |
| ● at 60 Hz                                                                            | 6 VA                |
| <b>closing power of magnet coil at DC</b>                                             | 205 W               |
| <b>holding power of magnet coil at DC</b>                                             | 2.5 W               |
| <b>closing delay</b>                                                                  |                     |
| ● at AC                                                                               | 25 ... 60 ms        |
| ● at DC                                                                               | 25 ... 60 ms        |
| <b>opening delay</b>                                                                  |                     |
| ● at AC                                                                               | 45 ... 80 ms        |
| ● at DC                                                                               | 45 ... 80 ms        |
| <b>control version of the switch operating mechanism</b>                              | Standard A1 - A2    |
| <b>Auxiliary circuit</b>                                                              |                     |
| <b>number of NC contacts for auxiliary contacts</b>                                   | 2                   |
| ● attachable                                                                          | 2                   |
| ● instantaneous contact                                                               | 2                   |
| <b>number of NO contacts for auxiliary contacts</b>                                   | 2                   |
| ● attachable                                                                          | 2                   |
| ● instantaneous contact                                                               | 2                   |
| <b>operational current at AC-15</b>                                                   |                     |
| ● at 230 V rated value                                                                | 4 A                 |
| ● at 400 V rated value                                                                | 3 A                 |
| ● at 500 V rated value                                                                | 2 A                 |
| ● at 690 V rated value                                                                | 2 A                 |
| <b>operational current at DC-13</b>                                                   |                     |
| ● at 24 V rated value                                                                 | 3 A                 |
| ● at 48 V rated value                                                                 | 1.5 A               |
| ● at 110 V rated value                                                                | 0.55 A              |

|                                                                                                                                                                                                                                                                                                                                                                                                                                                                                                                               |                                                                                                                                                                                                                                                     |
|-------------------------------------------------------------------------------------------------------------------------------------------------------------------------------------------------------------------------------------------------------------------------------------------------------------------------------------------------------------------------------------------------------------------------------------------------------------------------------------------------------------------------------|-----------------------------------------------------------------------------------------------------------------------------------------------------------------------------------------------------------------------------------------------------|
| <ul style="list-style-type: none"> <li>• at 125 V rated value</li> <li>• at 220 V rated value</li> </ul>                                                                                                                                                                                                                                                                                                                                                                                                                      | <p>0.55 A</p> <p>0.3 A</p>                                                                                                                                                                                                                          |
| <b>UL/CSA ratings</b>                                                                                                                                                                                                                                                                                                                                                                                                                                                                                                         |                                                                                                                                                                                                                                                     |
| <b>contact rating of auxiliary contacts according to UL</b>                                                                                                                                                                                                                                                                                                                                                                                                                                                                   | A600 / Q300                                                                                                                                                                                                                                         |
| <b>Short-circuit protection</b>                                                                                                                                                                                                                                                                                                                                                                                                                                                                                               |                                                                                                                                                                                                                                                     |
| <b>design of the fuse link</b>                                                                                                                                                                                                                                                                                                                                                                                                                                                                                                |                                                                                                                                                                                                                                                     |
| <ul style="list-style-type: none"> <li>• for short-circuit protection of the main circuit <ul style="list-style-type: none"> <li>— with type of coordination 2 required</li> </ul> </li> <li>• for short-circuit protection of the auxiliary switch required</li> </ul>                                                                                                                                                                                                                                                       | <p>gG: 355 A (500 V, 100 kA)</p> <p>gG: 10 A (690 V, 1 kA)</p>                                                                                                                                                                                      |
| <b>Installation/ mounting/ dimensions</b>                                                                                                                                                                                                                                                                                                                                                                                                                                                                                     |                                                                                                                                                                                                                                                     |
| <b>mounting position</b>                                                                                                                                                                                                                                                                                                                                                                                                                                                                                                      | For vertical mounting surface can be rotated +/-180°, and with 0° rotation can be tilted forward or backward +/- 30°, or standing                                                                                                                   |
| fastening method side-by-side mounting                                                                                                                                                                                                                                                                                                                                                                                                                                                                                        | Yes                                                                                                                                                                                                                                                 |
| <b>fastening method</b>                                                                                                                                                                                                                                                                                                                                                                                                                                                                                                       | screw fixing                                                                                                                                                                                                                                        |
| <b>height</b>                                                                                                                                                                                                                                                                                                                                                                                                                                                                                                                 | 196 mm                                                                                                                                                                                                                                              |
| <b>width</b>                                                                                                                                                                                                                                                                                                                                                                                                                                                                                                                  | 140 mm                                                                                                                                                                                                                                              |
| <b>depth</b>                                                                                                                                                                                                                                                                                                                                                                                                                                                                                                                  | 153 mm                                                                                                                                                                                                                                              |
| <b>required spacing</b>                                                                                                                                                                                                                                                                                                                                                                                                                                                                                                       |                                                                                                                                                                                                                                                     |
| <ul style="list-style-type: none"> <li>• with side-by-side mounting <ul style="list-style-type: none"> <li>— forwards</li> <li>— upwards</li> <li>— downwards</li> <li>— at the side</li> </ul> </li> <li>• for grounded parts <ul style="list-style-type: none"> <li>— forwards</li> <li>— upwards</li> <li>— at the side</li> <li>— downwards</li> </ul> </li> <li>• for live parts <ul style="list-style-type: none"> <li>— forwards</li> <li>— upwards</li> <li>— downwards</li> <li>— at the side</li> </ul> </li> </ul> | <p>20 mm</p> <p>10 mm</p> <p>10 mm</p> <p>0 mm</p> <p>20 mm</p> <p>10 mm</p> <p>10 mm</p> <p>10 mm</p> <p>20 mm</p> <p>10 mm</p> <p>10 mm</p> <p>10 mm</p>                                                                                          |
| <b>net weight</b>                                                                                                                                                                                                                                                                                                                                                                                                                                                                                                             | 3.85 kg                                                                                                                                                                                                                                             |
| <b>Connections/ Terminals</b>                                                                                                                                                                                                                                                                                                                                                                                                                                                                                                 |                                                                                                                                                                                                                                                     |
| <b>type of electrical connection</b>                                                                                                                                                                                                                                                                                                                                                                                                                                                                                          |                                                                                                                                                                                                                                                     |
| <ul style="list-style-type: none"> <li>• for main current circuit</li> <li>• for auxiliary and control circuit</li> <li>• at contactor for auxiliary contacts</li> <li>• of magnet coil</li> </ul>                                                                                                                                                                                                                                                                                                                            | <p>Connection bar</p> <p>screw-type terminals</p> <p>Screw-type terminals</p> <p>Screw-type terminals</p>                                                                                                                                           |
| <b>connectable conductor cross-section for auxiliary contacts</b>                                                                                                                                                                                                                                                                                                                                                                                                                                                             |                                                                                                                                                                                                                                                     |
| <ul style="list-style-type: none"> <li>• solid or stranded</li> <li>• finely stranded with core end processing</li> </ul>                                                                                                                                                                                                                                                                                                                                                                                                     | <p>1 ... 4 mm<sup>2</sup></p> <p>0.75 ... 2.5 mm<sup>2</sup></p>                                                                                                                                                                                    |
| <b>type of connectable conductor cross-sections</b>                                                                                                                                                                                                                                                                                                                                                                                                                                                                           |                                                                                                                                                                                                                                                     |
| <ul style="list-style-type: none"> <li>• for auxiliary contacts <ul style="list-style-type: none"> <li>— solid</li> <li>— solid or stranded</li> <li>— finely stranded with core end processing</li> </ul> </li> <li>• for AWG cables for auxiliary contacts</li> </ul>                                                                                                                                                                                                                                                       | <p>1x (1 ... 4mm<sup>2</sup>), 2x (1 ... 4mm<sup>2</sup>)</p> <p>1x (1 ... 4mm<sup>2</sup>), 2x (1 ... 4mm<sup>2</sup>)</p> <p>1x (0.75 ... 2.5 mm<sup>2</sup>), 2x (0.75 ... 2.5 mm<sup>2</sup>)</p> <p>1x (AWG 18 ... 14), 2x (AWG 18 ... 14)</p> |
| <b>AWG number as coded connectable conductor cross section for auxiliary contacts</b>                                                                                                                                                                                                                                                                                                                                                                                                                                         | 18 ... 14                                                                                                                                                                                                                                           |
| <b>Safety related data</b>                                                                                                                                                                                                                                                                                                                                                                                                                                                                                                    |                                                                                                                                                                                                                                                     |
| <b>product function</b>                                                                                                                                                                                                                                                                                                                                                                                                                                                                                                       |                                                                                                                                                                                                                                                     |
| <ul style="list-style-type: none"> <li>• mirror contact according to IEC 60947-4-1</li> <li>• positively driven operation according to IEC 60947-5-1</li> </ul>                                                                                                                                                                                                                                                                                                                                                               | <p>Yes</p> <p>No</p>                                                                                                                                                                                                                                |
| <b>Electrical Safety</b>                                                                                                                                                                                                                                                                                                                                                                                                                                                                                                      |                                                                                                                                                                                                                                                     |
| <b>protection class IP on the front according to IEC 60529</b>                                                                                                                                                                                                                                                                                                                                                                                                                                                                | IP00; IP20 with box terminal/cover                                                                                                                                                                                                                  |
| <b>touch protection on the front according to IEC 60529</b>                                                                                                                                                                                                                                                                                                                                                                                                                                                                   | finger-safe, for vertical contact from the front with box terminal/cover                                                                                                                                                                            |
| <b>Communication/ Protocol</b>                                                                                                                                                                                                                                                                                                                                                                                                                                                                                                |                                                                                                                                                                                                                                                     |
| <b>product function bus communication</b>                                                                                                                                                                                                                                                                                                                                                                                                                                                                                     | No                                                                                                                                                                                                                                                  |
| <b>Approvals Certificates</b>                                                                                                                                                                                                                                                                                                                                                                                                                                                                                                 |                                                                                                                                                                                                                                                     |



| Test Certificates                        | other | Railway                                  | Environment                                 |
|------------------------------------------|-------|------------------------------------------|---------------------------------------------|
| <a href="#">Special Test Certificate</a> |       | <a href="#">Confirmation</a>             | <a href="#">Miscellaneous</a>               |
|                                          |       | <a href="#">Special Test Certificate</a> | <a href="#">Environmental Confirmations</a> |

Further information

Information on the packaging

<https://support.industry.siemens.com/cs/ww/en/view/109813875>

Information for data generation and storage

<https://support.industry.siemens.com/cs/ww/en/view/109995012>

Information- and Downloadcenter (Catalogs, Brochures,...)

<https://www.siemens.com/ic10>

Industry Mall (Online ordering system)

<https://mall.industry.siemens.com/mall/en/en/Catalog/product?mlfb=3RT1363-6AE36>

Cax online generator

<https://support.automation.siemens.com/WW/CAXorder/default.aspx?lang=en&mlfb=3RT1363-6AE36>

Service&Support (Manuals, Certificates, Characteristics, FAQs,...)

<https://support.industry.siemens.com/cs/ww/en/ps/3RT1363-6AE36>

Image database (product images, 2D dimension drawings, 3D models, device circuit diagrams, EPLAN macros, ...)

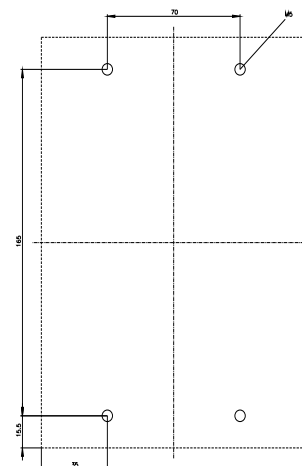
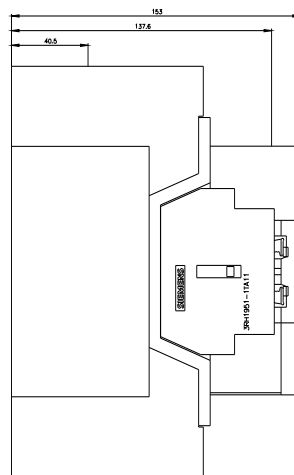
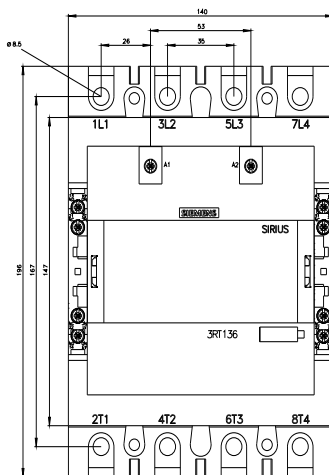
[https://www.automation.siemens.com/bilddb/cax\\_de.aspx?mlfb=3RT1363-6AE36&lang=en](https://www.automation.siemens.com/bilddb/cax_de.aspx?mlfb=3RT1363-6AE36&lang=en)

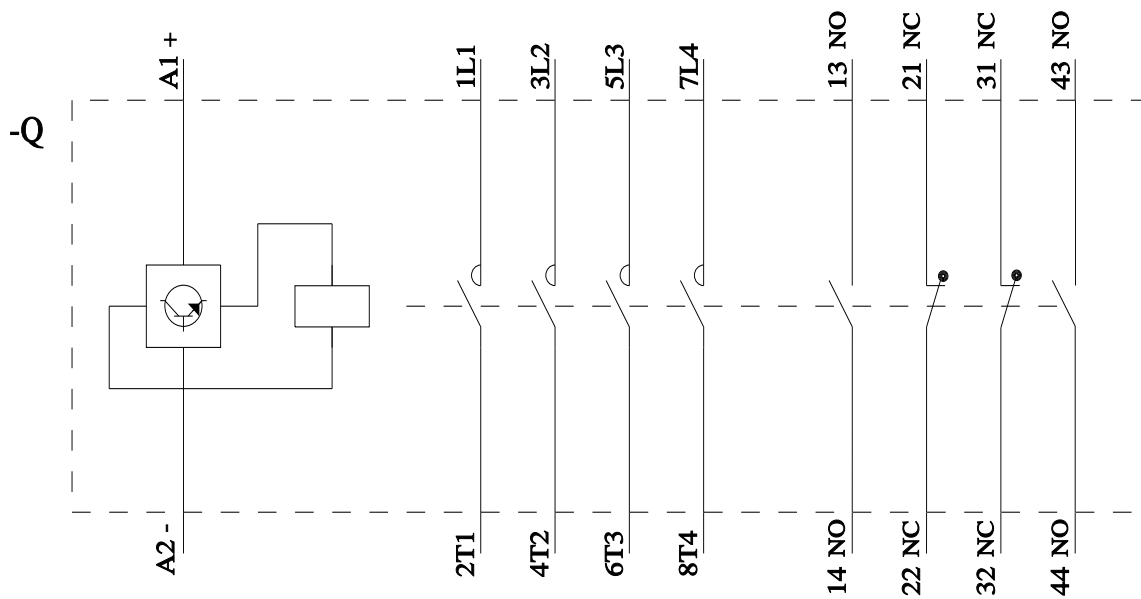
Characteristic: Tripping characteristics, I<sub>t</sub>, Let-through current

<https://support.industry.siemens.com/cs/ww/en/ps/3RT1363-6AE36/char>

Further characteristics (e.g. electrical endurance, switching frequency)

<https://www.automation.siemens.com/bilddb/index.aspx?view=Search&mlfb=3RT1363-6AE36&objecttype=14&gridview=view1>





last modified:

11/11/2025 