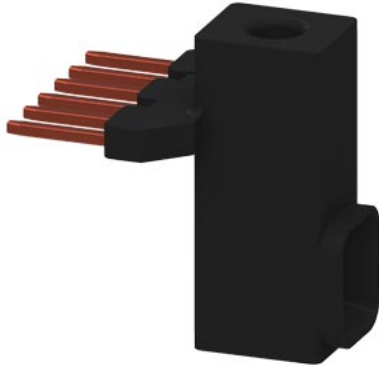


Link for paralleling With connecting terminal, 3-pole for 3RT2.1 with screw terminal



product brand name	SIRIUS
product category	Wiring modules, connectors and kits
product designation	parallel switching connection
design of the product	Parallel switching connection for contactors S00
product type designation	3RT19

**General technical data**

size of contactor	S00
Substance Prohibitance (Date)	07/01/2006
Weight	0.015 kg
number of poles	3

**Installation/ mounting/ dimensions**

fastening method	screw fixing
------------------	--------------

**Approvals Certificates**

General Product Approval	EMV	Test Certificates
--------------------------	-----	-------------------



[Special Test Certificate](#)

**Maritime application** other



[Miscellaneous](#)



**other** Railway Environment

[Confirmation](#)

[Miscellaneous](#)

[Special Test Certificate](#)

[Environmental Confirmations](#)

**Further information**

Information on the packaging  
<https://support.industry.siemens.com/cs/ww/en/view/109813875>  
 Information for data generation and storage  
<https://support.industry.siemens.com/cs/ww/en/view/109995012>  
 Information- and Downloadcenter (Catalogs, Brochures,...)  
<https://www.siemens.com/ic10>

Industry Mall (Online ordering system)

<https://mall.industry.siemens.com/mall/en/en/Catalog/product?mlfb=3RT1916-4BB31>

Cax online generator

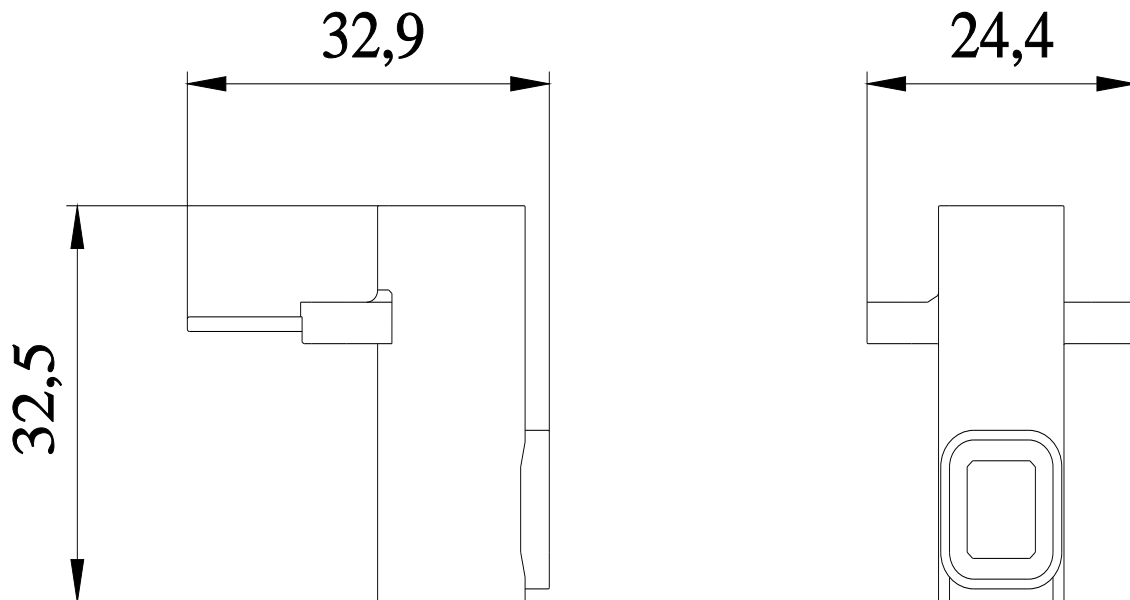
<https://support.automation.siemens.com/WW/CAXorder/default.aspx?lang=en&mlfb=3RT1916-4BB31>

Service&Support (Manuals, Certificates, Characteristics, FAQs,...)

<https://support.industry.siemens.com/cs/ww/en/ps/3RT1916-4BB31>

Image database (product images, 2D dimension drawings, 3D models, device circuit diagrams, EPLAN macros, ...)

[https://www.automation.siemens.com/bilddb/cax\\_de.aspx?mlfb=3RT1916-4BB31&lang=en](https://www.automation.siemens.com/bilddb/cax_de.aspx?mlfb=3RT1916-4BB31&lang=en)



---

last modified:

4/2/2025 