



Changeover operating mechanism for contactors 3RT106, 3RT146 AC (50...60 Hz) / DC operation, 220 ... 240 V Operating mechanism: Standard,economy circuit  
Screw terminal

product brand name	SIRIUS
product category	Solenoid coils
product designation	Changeover operating mechanism
product type designation	3RT19

General technical data	
Substance Prohibitance (Date)	05/01/2012
Weight	0.549 kg
type of voltage of the control supply voltage	AC/DC
control supply voltage 1 at AC	
• at 50 Hz	220 ... 240 V
• at 60 Hz	220 ... 240 V
control supply voltage 2 at AC	
• at 50 Hz rated value	240 V
• at 60 Hz rated value	240 V
control supply voltage 1 at DC	220 ... 240 V
control supply voltage 2 at DC rated value	240 V
apparent pick-up power of magnet coil at AC	
• at 50 Hz	590 VA
• at 60 Hz	590 VA
inductive power factor with closing power of the coil	
• at 50 Hz	0.9
• at 60 Hz	0.9
apparent holding power of magnet coil at AC	
• at 50 Hz	6.7 VA
• at 60 Hz	6.7 VA
inductive power factor with the holding power of the coil	
• at 50 Hz	0.9
• at 60 Hz	0.9

Approvals Certificates		
General Product Approval	EMV	Test Certificates



[Type Test Certificates/Test Report](#)

Test Certificates	Maritime application	other
-------------------	----------------------	-------



other	Railway	Environment
-------	---------	-------------



[Miscellaneous](#)

[Special Test Certificate](#)

[Environmental Confirmations](#)

**Further information**

Information on the packaging

<https://support.industry.siemens.com/cs/ww/en/view/109813875>

Information for data generation and storage

<https://support.industry.siemens.com/cs/ww/en/view/109995012>

Information- and Downloadcenter (Catalogs, Brochures,...)

<https://www.siemens.com/ic10>

Industry Mall (Online ordering system)

<https://mall.industry.siemens.com/mall/en/en/Catalog/product?mlfb=3RT1965-5AP31>

Cax online generator

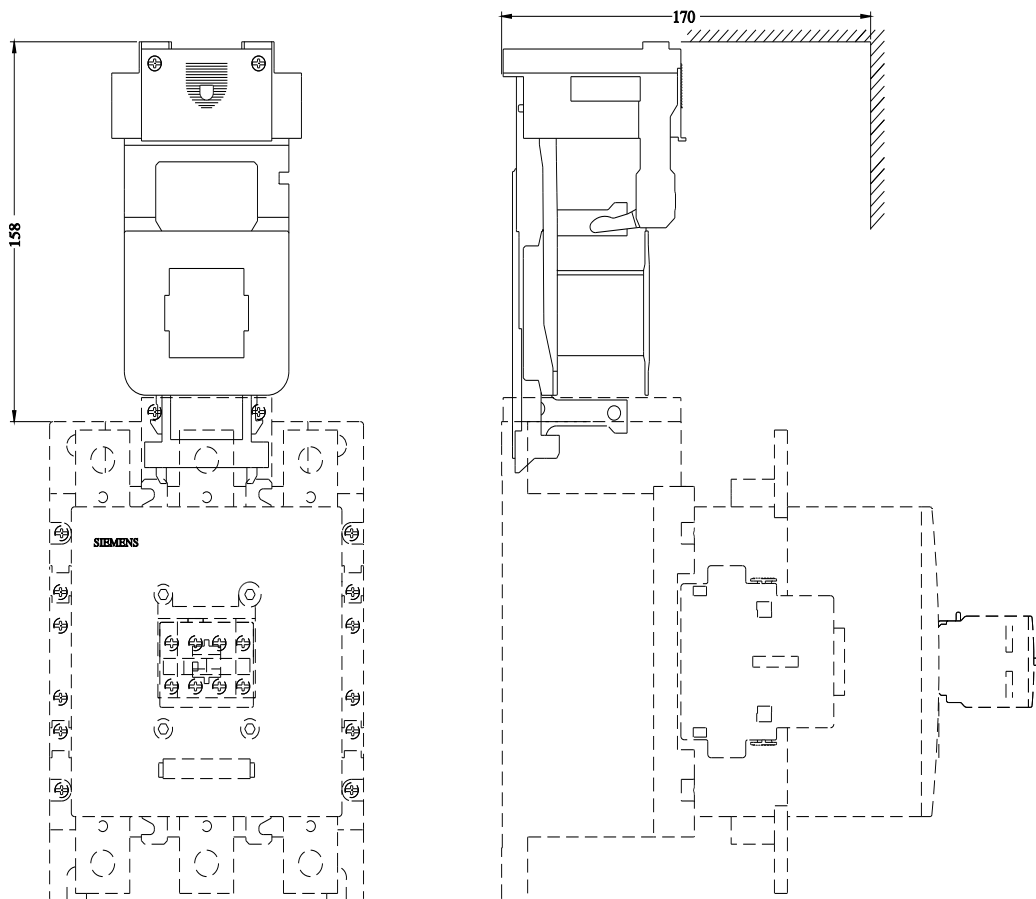
<https://support.automation.siemens.com/WW/CAXorder/default.aspx?lang=en&mlfb=3RT1965-5AP31>

Service&Support (Manuals, Certificates, Characteristics, FAQs,...)

<https://support.industry.siemens.com/cs/ww/en/ps/3RT1965-5AP31>

Image database (product images, 2D dimension drawings, 3D models, device circuit diagrams, EPLAN macros, ...)

[https://www.automation.siemens.com/bilddb/cax\\_de.aspx?mlfb=3RT1965-5AP31&lang=en](https://www.automation.siemens.com/bilddb/cax_de.aspx?mlfb=3RT1965-5AP31&lang=en)





last modified:

4/2/2025 ↻