



power contactor, AC-3e/AC-3, 17 A, 7.5 kW / 400 V, 3-pole, 110 V DC, auxiliary contacts: 2 NO + 2 NC, spring-loaded terminal, size: S0, removable auxiliary switch

|  |                          |
|--|--------------------------|
| <b>product brand name</b>  | SIRIUS                   |
| <b>product designation</b>   | Power contactor          |
| <b>product type designation</b>  | 3RT2                     |
| <b>General technical data</b>  |                          |
| <b>size of contactor</b>   | S0                       |
| <b>product extension</b>   |                          |
| • function module for communication  | No                       |
| • auxiliary switch   | No                       |
| <b>power loss [W] for rated value of the current</b>   |                          |
| • at AC in hot operating state   | 1.8 W                    |
| • at AC in hot operating state per pole  | 0.6 W                    |
| • without load current share typical   | 5.9 W                    |
| <b>type of calculation of power loss depending on pole</b>   | quadratic                |
| <b>insulation voltage</b>  |                          |
| • of main circuit with degree of pollution 3 rated value   | 690 V                    |
| • of auxiliary circuit with degree of pollution 3 rated value  | 690 V                    |
| <b>surge voltage resistance</b>  |                          |
| • of main circuit rated value  | 6 kV                     |
| • of auxiliary circuit rated value   | 6 kV                     |
| maximum permissible voltage for protective separation between coil and main contacts according to EN 60947-1 | 400 V                    |
| <b>shock resistance at rectangular impulse</b>   |                          |
| • at DC  | 10g / 5 ms, 7,5g / 10 ms |
| <b>shock resistance with sine pulse</b>  |                          |
| • at DC  | 15g / 5 ms, 10g / 10 ms  |
| <b>mechanical service life (operating cycles)</b>  |                          |
| • of contactor typical   | 10 000 000               |
| • of the contactor with added electronically optimized auxiliary switch block typical                        | 5 000 000                |
| • of the contactor with added auxiliary switch block typical   | 10 000 000               |
| <b>reference code according to IEC 81346-2</b>   | Q                        |
| <b>Substance Prohibition (Date)</b>  | 10/01/2009               |
| <b>Weight</b>  | 0.6 kg                   |
| <b>Ambient conditions</b>  |                          |
| installation altitude at height above sea level maximum  | 2 000 m                  |
| <b>ambient temperature</b>   |                          |
| • during operation   | -25 ... +60 °C           |
| • during storage   | -55 ... +80 °C           |
| <b>relative humidity minimum</b>   | 10 %                     |
| <b>relative humidity at 55 °C according to IEC 60068-2-30 maximum</b>  | 95 %                     |

| Environmental footprint  |                    |
|--|--------------------|
| Environmental Product Declaration(EPD)                                 | Yes                |
| global warming potential [CO2 eq] total                                | 221 kg             |
| global warming potential [CO2 eq] during manufacturing                 | 2.65 kg            |
| global warming potential [CO2 eq] during operation                     | 219 kg             |
| global warming potential [CO2 eq] after end of life                    | -0.639 kg          |
| Main circuit   |                    |
| <b>number of poles for main current circuit</b>                        | 3                  |
| <b>number of NO contacts for main contacts</b>                         | 3                  |
| <b>number of NC contacts for main contacts</b>                         | 0                  |
| <b>operating voltage</b>   |                    |
| • at AC-3 rated value maximum  | 690 V              |
| • at AC-3e rated value maximum   | 690 V              |
| <b>operational current</b>   |                    |
| • at AC-1 at 400 V at ambient temperature 40 °C rated value            | 40 A               |
| • at AC-1  |                    |
| — up to 690 V at ambient temperature 40 °C rated value                 | 40 A               |
| — up to 690 V at ambient temperature 60 °C rated value                 | 35 A               |
| • at AC-3  |                    |
| — at 400 V rated value   | 17 A               |
| — at 500 V rated value   | 17 A               |
| — at 690 V rated value   | 13 A               |
| • at AC-3e   |                    |
| — at 400 V rated value   | 17 A               |
| — at 500 V rated value   | 17 A               |
| — at 690 V rated value   | 13 A               |
| • at AC-4 at 400 V rated value   | 15.5 A             |
| • at AC-5a up to 690 V rated value                                     | 35.2 A             |
| • at AC-5b up to 400 V rated value                                     | 14.1 A             |
| • at AC-6a   |                    |
| — up to 230 V for current peak value n=20 rated value                  | 11.4 A             |
| — up to 400 V for current peak value n=20 rated value                  | 11.4 A             |
| — up to 500 V for current peak value n=20 rated value                  | 11.4 A             |
| — up to 690 V for current peak value n=20 rated value                  | 11.3 A             |
| • at AC-6a   |                    |
| — up to 230 V for current peak value n=30 rated value                  | 7.6 A              |
| — up to 400 V for current peak value n=30 rated value                  | 7.6 A              |
| — up to 500 V for current peak value n=30 rated value                  | 7.6 A              |
| — up to 690 V for current peak value n=30 rated value                  | 7.6 A              |
| minimum cross-section in main circuit at maximum AC-1 rated value      | 10 mm <sup>2</sup> |
| <b>operational current for approx. 200000 operating cycles at AC-4</b> |                    |
| • at 400 V rated value   | 7.7 A              |
| • at 690 V rated value   | 7.7 A              |
| <b>operational current</b>   |                    |
| • <b>at 1 current path at DC-1</b>                                     |                    |
| — at 24 V rated value  | 35 A               |
| — at 60 V rated value  | 20 A               |
| — at 110 V rated value   | 4.5 A              |
| — at 220 V rated value   | 1 A                |
| — at 440 V rated value   | 0.4 A              |
| — at 600 V rated value   | 0.25 A             |
| • <b>with 2 current paths in series at DC-1</b>                        |                    |
| — at 24 V rated value  | 35 A               |
| — at 60 V rated value  | 35 A               |
| — at 110 V rated value   | 35 A               |
| — at 220 V rated value   | 5 A                |
| — at 440 V rated value   | 1 A                |

|   |   |
|---|---|
| — at 600 V rated value  | 0.8 A   |
| ● <b>with 3 current paths in series at DC-1</b>                         |   |
| — at 24 V rated value   | 35 A  |
| — at 60 V rated value   | 35 A  |
| — at 110 V rated value  | 35 A  |
| — at 220 V rated value  | 35 A  |
| — at 440 V rated value  | 2.9 A   |
| — at 600 V rated value  | 1.4 A   |
| ● <b>at 1 current path at DC-3 at DC-5</b>                              |   |
| — at 24 V rated value   | 20 A  |
| — at 60 V rated value   | 5 A   |
| — at 110 V rated value  | 2.5 A   |
| — at 220 V rated value  | 1 A   |
| — at 440 V rated value  | 0.09 A  |
| — at 600 V rated value  | 0.06 A  |
| ● <b>with 2 current paths in series at DC-3 at DC-5</b>                 |   |
| — at 24 V rated value   | 35 A  |
| — at 60 V rated value   | 35 A  |
| — at 110 V rated value  | 15 A  |
| — at 220 V rated value  | 3 A   |
| — at 440 V rated value  | 0.27 A  |
| — at 600 V rated value  | 0.16 A  |
| ● <b>with 3 current paths in series at DC-3 at DC-5</b>                 |   |
| — at 24 V rated value   | 35 A  |
| — at 60 V rated value   | 35 A  |
| — at 110 V rated value  | 35 A  |
| — at 220 V rated value  | 10 A  |
| — at 440 V rated value  | 0.6 A   |
| — at 600 V rated value  | 0.6 A   |
| <b>operating power</b>  |   |
| ● <b>at AC-3</b>  |   |
| — at 230 V rated value  | 4 kW  |
| — at 400 V rated value  | 7.5 kW  |
| — at 500 V rated value  | 7.5 kW  |
| — at 690 V rated value  | 11 kW   |
| ● <b>at AC-3e</b>   |   |
| — at 230 V rated value  | 4 kW  |
| — at 400 V rated value  | 7.5 kW  |
| — at 500 V rated value  | 7.5 kW  |
| — at 690 V rated value  | 11 kW   |
| <b>operating power for approx. 200000 operating cycles at AC-4</b>      |   |
| ● at 400 V rated value  | 3.5 kW  |
| ● at 690 V rated value  | 6 kW  |
| <b>operating apparent power at AC-6a</b>                                |   |
| ● up to 230 V for current peak value n=20 rated value                   | 4.5 kVA   |
| ● up to 400 V for current peak value n=20 rated value                   | 7.8 kVA   |
| ● up to 500 V for current peak value n=20 rated value                   | 9.9 kVA   |
| ● up to 690 V for current peak value n=20 rated value                   | 13.6 kVA  |
| <b>operating apparent power at AC-6a</b>                                |   |
| ● up to 230 V for current peak value n=30 rated value                   | 3 kVA   |
| ● up to 400 V for current peak value n=30 rated value                   | 5.2 kVA   |
| ● up to 500 V for current peak value n=30 rated value                   | 6.6 kVA   |
| ● up to 690 V for current peak value n=30 rated value                   | 9.1 kVA   |
| <b>short-time withstand current in cold operating state up to 40 °C</b> |   |
| ● limited to 1 s switching at zero current maximum                      | 225 A; Use minimum cross-section acc. to AC-1 rated value |
| ● limited to 5 s switching at zero current maximum                      | 225 A; Use minimum cross-section acc. to AC-1 rated value |
| ● limited to 10 s switching at zero current maximum                     | 189 A; Use minimum cross-section acc. to AC-1 rated value |
| ● limited to 30 s switching at zero current maximum                     | 140 A; Use minimum cross-section acc. to AC-1 rated value |
| ● limited to 60 s switching at zero current maximum                     | 115 A; Use minimum cross-section acc. to AC-1 rated value |

|   |   |
|---|---|
| <b>no-load switching frequency</b>  |   |
| • at DC   | 1 500 1/h                                       |
| <b>operating frequency</b>  |   |
| • at AC-1 maximum   | 1 000 1/h                                       |
| • at AC-2 maximum   | 1 000 1/h                                       |
| • at AC-3 maximum   | 1 000 1/h                                       |
| • at AC-3e  |   |
| — maximum   | 1 000 1/h                                       |
| • at AC-4 maximum   | 300 1/h   |
| <b>Control circuit/ Control</b>   |   |
| <b>type of voltage of the control supply voltage</b>                                  | DC  |
| <b>control supply voltage at DC rated value</b>                                       | 110 V   |
| <b>operating range factor control supply voltage rated value of magnet coil at DC</b> |   |
| • initial value   | 0.8   |
| • full-scale value  | 1.1   |
| <b>closing power of magnet coil at DC</b>   | 5.9 W   |
| <b>holding power of magnet coil at DC</b>   | 5.9 W   |
| <b>closing delay</b>  |   |
| • at DC   | 50 ... 170 ms                                   |
| <b>opening delay</b>  |   |
| • at DC   | 15 ... 18 ms                                    |
| <b>arcing time</b>  | 10 ... 10 ms                                    |
| <b>control version of the switch operating mechanism</b>                              | Standard A1 - A2                                |
| <b>Auxiliary circuit</b>  |   |
| number of NC contacts for auxiliary contacts instantaneous contact                    | 2   |
| number of NO contacts for auxiliary contacts instantaneous contact                    | 2   |
| operational current at AC-12 maximum  | 10 A  |
| <b>operational current at AC-15</b>   |   |
| • at 230 V rated value  | 6 A   |
| • at 400 V rated value  | 3 A   |
| • at 500 V rated value  | 2 A   |
| • at 690 V rated value  | 1 A   |
| <b>operational current at DC-12</b>   |   |
| • at 24 V rated value   | 10 A  |
| • at 48 V rated value   | 6 A   |
| • at 60 V rated value   | 6 A   |
| • at 110 V rated value  | 3 A   |
| • at 125 V rated value  | 2 A   |
| • at 220 V rated value  | 1 A   |
| • at 600 V rated value  | 0.15 A  |
| <b>operational current at DC-13</b>   |   |
| • at 24 V rated value   | 6 A   |
| • at 48 V rated value   | 2 A   |
| • at 60 V rated value   | 2 A   |
| • at 110 V rated value  | 1 A   |
| • at 125 V rated value  | 0.9 A   |
| • at 220 V rated value  | 0.3 A   |
| • at 600 V rated value  | 0.1 A   |
| <b>contact reliability of auxiliary contacts</b>                                      | 1 faulty switching per 100 million (17 V, 1 mA) |
| <b>UL/CSA ratings</b>   |   |
| <b>full-load current (FLA) for 3-phase AC motor</b>                                   |   |
| • at 480 V rated value  | 14 A  |
| • at 600 V rated value  | 17 A  |
| <b>yielded mechanical performance [hp]</b>  |   |
| • for single-phase AC motor   |   |
| — at 110/120 V rated value  | 1 hp  |
| — at 230 V rated value  | 3 hp  |
| • for 3-phase AC motor  |   |

|   |  |
|---|--|
| — at 200/208 V rated value  | 3 hp   |
| — at 220/230 V rated value  | 5 hp   |
| — at 460/480 V rated value  | 10 hp  |
| — at 575/600 V rated value  | 15 hp  |
| <b>contact rating of auxiliary contacts according to UL</b>   | A600 / Q600  |
| <b>Short-circuit protection</b>   |  |
| design of the miniature circuit breaker for short-circuit protection of the auxiliary circuit up to 230 V   | C characteristic: 10 A; 0.4 kA   |
| <b>design of the fuse link</b>  |  |
| <ul style="list-style-type: none"> <li>• for short-circuit protection of the main circuit <ul style="list-style-type: none"> <li>— with type of coordination 1 required</li> <li>— with type of coordination 2 required</li> </ul> </li> <li>• for short-circuit protection of the auxiliary switch required</li> </ul>   | gG: 63 A (690 V, 100 kA), aM: 32 A (690 V, 100 kA), BS88: 63 A (415 V, 80 kA)<br>gG: 25 A (690 V, 100 kA), aM: 20 A (690 V, 100 kA), BS88: 25 A (415 V, 80 kA)<br>gG: 10 A (500 V, 1 kA) |
| <b>Installation/ mounting/ dimensions</b>   |  |
| <b>mounting position</b>  | +/-180° rotation possible on vertical mounting surface; can be tilted forward and backward by +/- 22.5° on vertical mounting surface   |
| fastening method side-by-side mounting  | Yes  |
| <b>fastening method</b>   | screw and snap-on mounting onto 35 mm DIN rail according to DIN EN 60715   |
| <b>height</b>   | 102 mm   |
| <b>width</b>  | 45 mm  |
| <b>depth</b>  | 154 mm   |
| <b>required spacing</b>   |  |
| <ul style="list-style-type: none"> <li>• with side-by-side mounting <ul style="list-style-type: none"> <li>— forwards</li> <li>— upwards</li> <li>— downwards</li> <li>— at the side</li> </ul> </li> <li>• for grounded parts <ul style="list-style-type: none"> <li>— forwards</li> <li>— upwards</li> <li>— at the side</li> <li>— downwards</li> </ul> </li> <li>• for live parts <ul style="list-style-type: none"> <li>— forwards</li> <li>— upwards</li> <li>— downwards</li> <li>— at the side</li> </ul> </li> </ul> | 10 mm<br>10 mm<br>10 mm<br>0 mm<br>10 mm<br>10 mm<br>6 mm<br>10 mm<br>10 mm<br>10 mm<br>6 mm   |
| <b>Connections/ Terminals</b>   |  |
| <b>type of electrical connection</b>  |  |
| <ul style="list-style-type: none"> <li>• for main current circuit</li> <li>• for auxiliary and control circuit</li> <li>• at contactor for auxiliary contacts</li> <li>• of magnet coil</li> </ul>  | spring-loaded terminals<br>spring-loaded terminals<br>Spring-type terminals<br>Spring-type terminals   |
| <b>type of connectable conductor cross-sections</b>   |  |
| <ul style="list-style-type: none"> <li>• for main contacts <ul style="list-style-type: none"> <li>— solid</li> <li>— solid or stranded</li> <li>— finely stranded with core end processing</li> <li>— finely stranded without core end processing</li> </ul> </li> <li>• for AWG cables for main contacts</li> </ul>  | 2x (1 ... 10 mm <sup>2</sup> )<br>2x (1 ... 10 mm <sup>2</sup> )<br>2x (1 ... 6 mm <sup>2</sup> )<br>2x (1 ... 6 mm <sup>2</sup> )<br>2x (18 ... 8)                                      |
| <b>connectable conductor cross-section for main contacts</b>  |  |
| <ul style="list-style-type: none"> <li>• solid</li> <li>• stranded</li> <li>• finely stranded with core end processing</li> <li>• finely stranded without core end processing</li> </ul>  | 1 ... 10 mm <sup>2</sup><br>1 ... 10 mm <sup>2</sup><br>1 ... 6 mm <sup>2</sup><br>1 ... 6 mm <sup>2</sup>   |
| <b>connectable conductor cross-section for auxiliary contacts</b>   |  |
| <ul style="list-style-type: none"> <li>• solid or stranded</li> <li>• finely stranded with core end processing</li> <li>• finely stranded without core end processing</li> </ul>  | 0.5 ... 2.5 mm <sup>2</sup><br>0.5 ... 1.5 mm <sup>2</sup><br>0.5 ... 2.5 mm <sup>2</sup>  |
| <b>type of connectable conductor cross-sections</b>   |  |
| <ul style="list-style-type: none"> <li>• for auxiliary contacts</li> </ul>  |  |

|   |                                   |
|---|-----------------------------------|
| — solid or stranded   | 2x (0.5 ... 2.5 mm <sup>2</sup> ) |
| — finely stranded with core end processing  | 2x (0.5 ... 1.5 mm <sup>2</sup> ) |
| — finely stranded without core end processing   | 2x (0.5 ... 2.5 mm <sup>2</sup> ) |
| • for AWG cables for auxiliary contacts   | 2x (20 ... 14)                    |
| <b>AWG number as coded connectable conductor cross section for main contacts</b>      | 18 ... 8                          |
| <b>AWG number as coded connectable conductor cross section for auxiliary contacts</b> | 20 ... 14                         |

**Safety related data**

|  |  |
|--|--|
| <b>product function</b>  |  |
| • mirror contact according to IEC 60947-4-1                          | Yes  |
| • positively driven operation according to IEC 60947-5-1             | No   |
| • suitable for safety function                                       | Yes  |
| suitability for use safety-related switching OFF                     | Yes  |
| <b>service life maximum</b>  | 20 a   |
| <b>test wear-related service life necessary</b>                      | Yes  |
| <b>proportion of dangerous failures</b>                              |  |
| • with low demand rate according to SN 31920                         | 40 %   |
| • with high demand rate according to SN 31920                        | 73 %   |
| <b>B10 value with high demand rate according to SN 31920</b>         | 1 000 000  |
| <b>failure rate [FIT] with low demand rate according to SN 31920</b> | 100 FIT  |
| <b>ISO 13849</b>   |  |
| <b>device type according to ISO 13849-1</b>                          | 3  |
| <b>overdimensioning according to ISO 13849-2 necessary</b>           | Yes  |
| <b>IEC 61508</b>   |  |
| <b>safety device type according to IEC 61508-2</b>                   | Type A   |
| <b>Electrical Safety</b>   |  |
| <b>protection class IP on the front according to IEC 60529</b>       | IP20   |
| <b>touch protection on the front according to IEC 60529</b>          | finger-safe, for vertical contact from the front |

**Approvals Certificates**

**General Product Approval**



[KC](#)

|                                 |            |                          |                             |
|---------------------------------|------------|--------------------------|-----------------------------|
| <b>General Product Approval</b> | <b>EMV</b> | <b>Test Certificates</b> | <b>Maritime application</b> |
|---------------------------------|------------|--------------------------|-----------------------------|



[Type Test Certificates/Test Report](#)

[Special Test Certificate](#)



|                             |              |
|-----------------------------|--------------|
| <b>Maritime application</b> | <b>other</b> |
|-----------------------------|--------------|



[Miscellaneous](#)



|              |                |                        |                    |
|--------------|----------------|------------------------|--------------------|
| <b>other</b> | <b>Railway</b> | <b>Dangerous goods</b> | <b>Environment</b> |
|--------------|----------------|------------------------|--------------------|

[Confirmation](#)

[Special Test Certificate](#)

[Transport Information](#)



[Environmental Confirmations](#)

**Further information**

Information on the packaging

<https://support.industry.siemens.com/cs/ww/en/view/109813875>

Information for data generation and storage

<https://support.industry.siemens.com/cs/ww/en/view/109995012>

Information- and Downloadcenter (Catalogs, Brochures,...)

<https://www.siemens.com/ic10>

Industry Mall (Online ordering system)

<https://mall.industry.siemens.com/mall/en/en/Catalog/product?mlfb=3RT2025-2BF44>

Cax online generator

<https://support.automation.siemens.com/WW/CAXorder/default.aspx?lang=en&mlfb=3RT2025-2BF44>

Service&Support (Manuals, Certificates, Characteristics, FAQs,...)

<https://support.industry.siemens.com/cs/ww/en/ps/3RT2025-2BF44>

Image database (product images, 2D dimension drawings, 3D models, device circuit diagrams, EPLAN macros, ...)

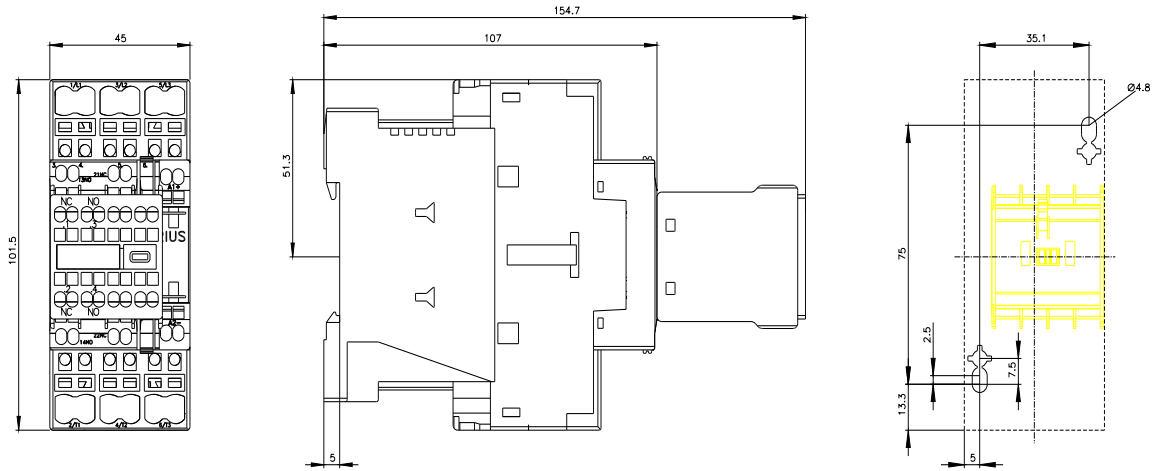
[https://www.automation.siemens.com/bilddb/cax\\_de.aspx?mlfb=3RT2025-2BF44&lang=en](https://www.automation.siemens.com/bilddb/cax_de.aspx?mlfb=3RT2025-2BF44&lang=en)

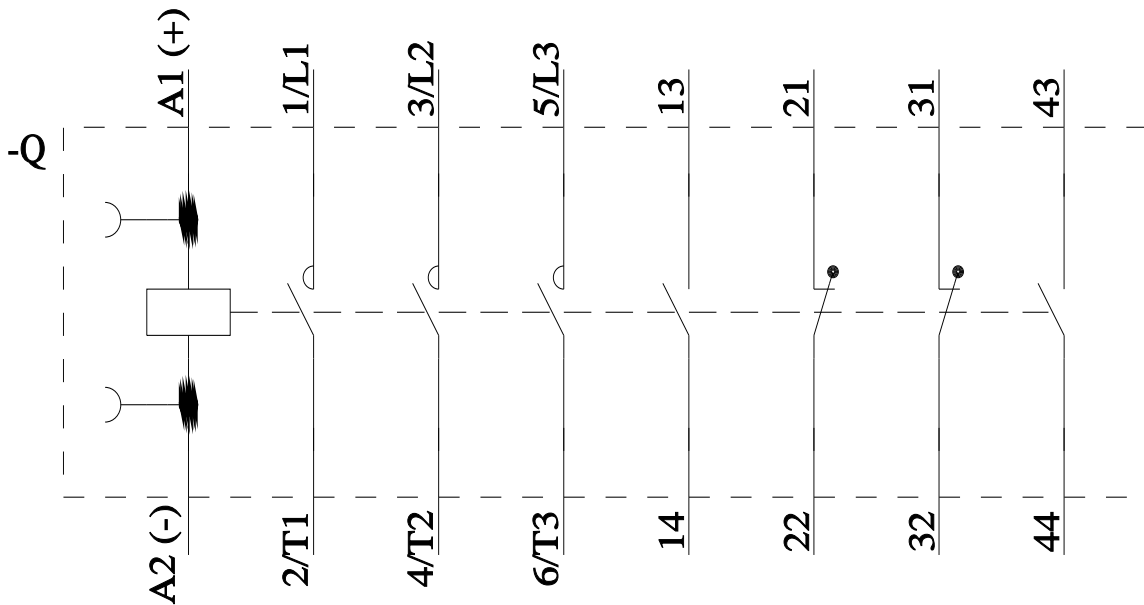
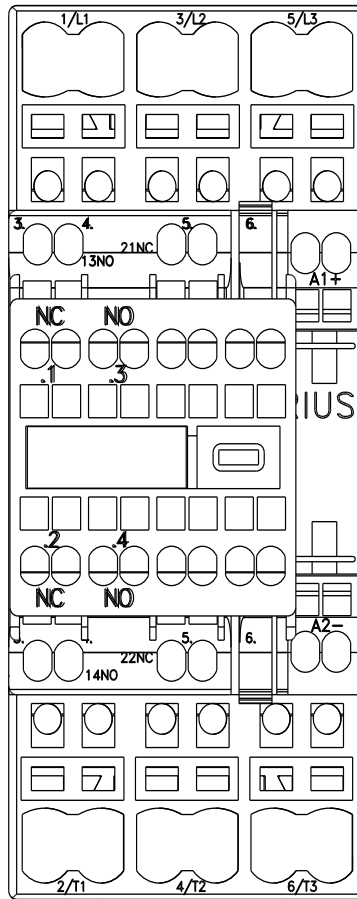
Characteristic: Tripping characteristics, I<sup>2</sup>t, Let-through current

<https://support.industry.siemens.com/cs/ww/en/ps/3RT2025-2BF44/char>

Further characteristics (e.g. electrical endurance, switching frequency)

<https://www.automation.siemens.com/bilddb/index.aspx?view=Search&mlfb=3RT2025-2BF44&objecttype=14&gridview=view1>





last modified:

10/21/2025