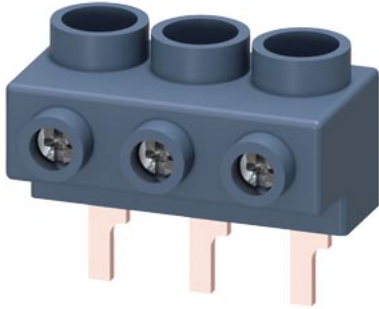


3-phase supply terminal for 3-phase busbar for size S0 and S00 connection from top Pin shape connections



<b>product brand name</b>	SIRIUS
<b>product category</b>	Plugs, adapters and terminals
<b>product designation</b>	3-phase supply terminal
<b>product type designation</b>	3RV19
<b>General technical data</b>	
<b>certificate of suitability</b>	CE / UL / CSA / CCC
<b>size of the circuit-breaker</b>	S00, S0
insulation voltage with degree of pollution 3 at AC rated value	690 V
protection class IP on the front according to IEC 60529	IP20
<b>Substance Prohibittance (Date)</b>	07/01/2006
<b>Weight</b>	41.8 g
<b>ampacity maximum</b>	63 A
<b>Ambient conditions</b>	
<b>ambient temperature</b>	
• during operation	-20 ... +60 °C
• during storage	-50 ... +80 °C
<b>Environmental footprint</b>	
Environmental Product Declaration (EPD)	Yes
global warming potential [CO2 eq] total	19.1 kg
global warming potential [CO2 eq] during manufacturing	0.405 kg
global warming potential [CO2 eq] during operation	18.7 kg
global warming potential [CO2 eq] after end of life	-0.076 kg
<b>Electrical Safety</b>	
<b>protection class IP on the front according to IEC 60529</b>	IP20
<b>touch protection on the front according to IEC 60529</b>	finger-safe, for vertical contact from the front
<b>Installation/ mounting/ dimensions</b>	
<b>height</b>	24 mm
<b>width</b>	44 mm
<b>depth</b>	25 mm
<b>Connections/ Terminals</b>	
type of electrical connection for main current circuit	screw-type terminals
<b>type of connectable conductor cross-sections</b>	
• for main contacts	
— solid	1x (2.5 ... 25 mm <sup>2</sup> )
— stranded	1x (2.5 ... 25 mm <sup>2</sup> )
— finely stranded with core end processing	1x (4 ... 16 mm <sup>2</sup> )
• for AWG cables for main contacts	1x (12 ... 4)
<b>connectable conductor cross-section for main contacts</b>	
• solid or stranded	2.5 ... 25 mm <sup>2</sup>
• stranded	2.5 ... 25 mm <sup>2</sup>

- finely stranded with core end processing

4 ... 16 mm<sup>2</sup>

AWG number as coded connectable conductor cross section for main contacts

12 ... 4

### Approvals Certificates

General Product Approval

Test Certificates

Maritime application



EG-Konf.



UL



[Type Test Certificates/Test Report](#)



ABS

Maritime application

other



BUREAU  
VERITAS



DNV



PRS



RMRS



[Confirmation](#)

other

Environment



VDE



EPD

[Environmental Confirmations](#)

### Further information

Information on the packaging

<https://support.industry.siemens.com/cs/ww/en/view/109813875>

Information for data generation and storage

<https://support.industry.siemens.com/cs/ww/en/view/109995012>

Information- and Downloadcenter (Catalogs, Brochures,...)

<https://www.siemens.com/ic10>

Industry Mall (Online ordering system)

<https://mall.industry.siemens.com/mall/en/en/Catalog/product?mlfb=3RV1915-5A>

Cax online generator

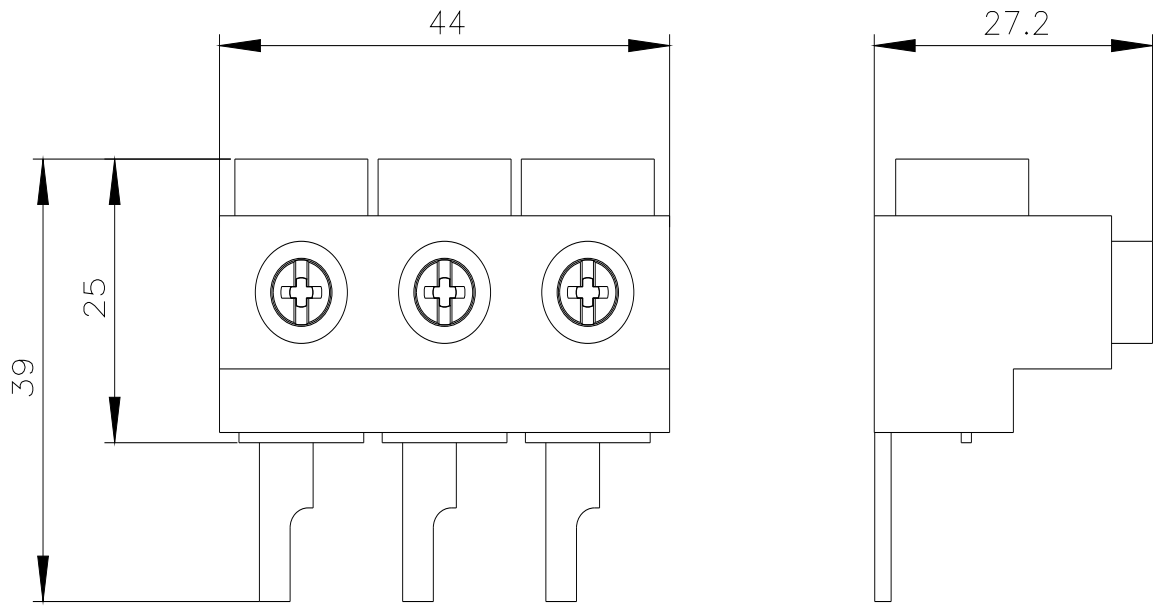
<https://support.automation.siemens.com/WW/CAXorder/default.aspx?lang=en&mlfb=3RV1915-5A>

Service&Support (Manuals, Certificates, Characteristics, FAQs,...)

<https://support.industry.siemens.com/cs/ww/en/ps/3RV1915-5A>

Image database (product images, 2D dimension drawings, 3D models, device circuit diagrams, EPLAN macros, ...)

[https://www.automation.siemens.com/bilddb/cax\\_de.aspx?mlfb=3RV1915-5A&lang=en](https://www.automation.siemens.com/bilddb/cax_de.aspx?mlfb=3RV1915-5A&lang=en)



---

last modified:

4/2/2025 