



Undervoltage release 415 V AC, 50 Hz/480 V AC, 60 Hz with leading auxiliary contact 2 NO with spring-type terminal for circuit breaker 3RV2

|  |                           |
|--|---------------------------|
| product brand name   | SIRIUS                    |
| product category   | Auxiliary release         |
| product designation  | undervoltage release      |
| design of the product  | with 2 auxiliary contacts |
| product type designation   | 3RV29                     |
| suitability for use  | motor circuit breaker     |
| <b>General technical data</b>  |                           |
| certificate of suitability   | CE / UL / CSA             |
| size of the circuit-breaker  | S00, S0, S2, S3           |
| closing active power at AC maximum   | 13 W                      |
| active power at AC in operation maximum  | 2.4 W                     |
| apparent power at AC in operation maximum  | 7.2 VA                    |
| insulation voltage   |                           |
| • rated value  | 690 V                     |
| • with degree of pollution 3 at AC rated value   | 690 V                     |
| degree of pollution  | 3                         |
| protection class IP on the front according to IEC 60529                                    | IP20                      |
| break time maximum   | 20 ms                     |
| reference code according to DIN 40719 extended according to IEC 204-2 according to IEC 750 | F                         |
| reference code according to EN 61346-2   | F                         |
| Substance Prohibittance (Date)   | 05/01/2012                |
| Weight   | 139 g                     |
| type of voltage of the control supply voltage  | AC                        |
| control supply voltage 1 at AC   |                           |
| • at 50 Hz rated value   | 415 V                     |
| • at 60 Hz rated value   | 480 V                     |
| control supply voltage frequency 1   | 50 ... 60 Hz              |
| number of NC contacts for auxiliary contacts instantaneous contact                         | 0                         |
| number of NO contacts for auxiliary contacts   |                           |
| • instantaneous contact  | 0                         |
| • leading contact  | 2                         |
| number of CO contacts of auxiliary contacts instantaneous contact                          | 0                         |
| <b>Ambient conditions</b>  |                           |
| ambient temperature  |                           |
| • during operation   | -20 ... +60 °C            |
| • during storage   | -50 ... +80 °C            |
| <b>Electrical Safety</b>   |                           |
| protection class IP on the front according to IEC 60529                                    | IP20                      |

|   |  |
|---|--|
| touch protection on the front according to IEC 60529            | finger-safe, for vertical contact from the front |
| <b>Short-circuit protection</b>                                 |  |
| design of short-circuit protection                              | fuse   |
| <b>Installation/ mounting/ dimensions</b>                       |  |
| fastening method  | snap-on mounting                                 |
| height  | 90 mm  |
| width   | 19 mm  |
| depth   | 68 mm  |
| <b>Connections/ Terminals</b>                                   |  |
| type of electrical connection for auxiliary and control circuit | spring-loaded terminals                          |

**Approvals Certificates**

|                                 |                          |
|---------------------------------|--------------------------|
| <b>General Product Approval</b> | <b>Test Certificates</b> |
|---------------------------------|--------------------------|



[Type Test Certificates/Test Report](#)

[Special Test Certificate](#)

**Maritime application**



|              |                |                    |
|--------------|----------------|--------------------|
| <b>other</b> | <b>Railway</b> | <b>Environment</b> |
|--------------|----------------|--------------------|

[Miscellaneous](#)



[Confirmation](#)

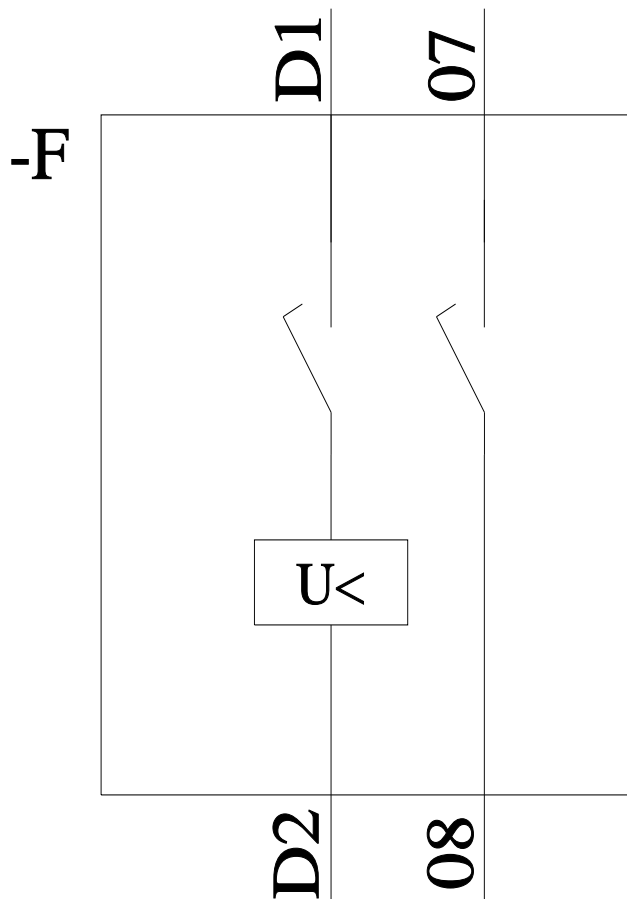
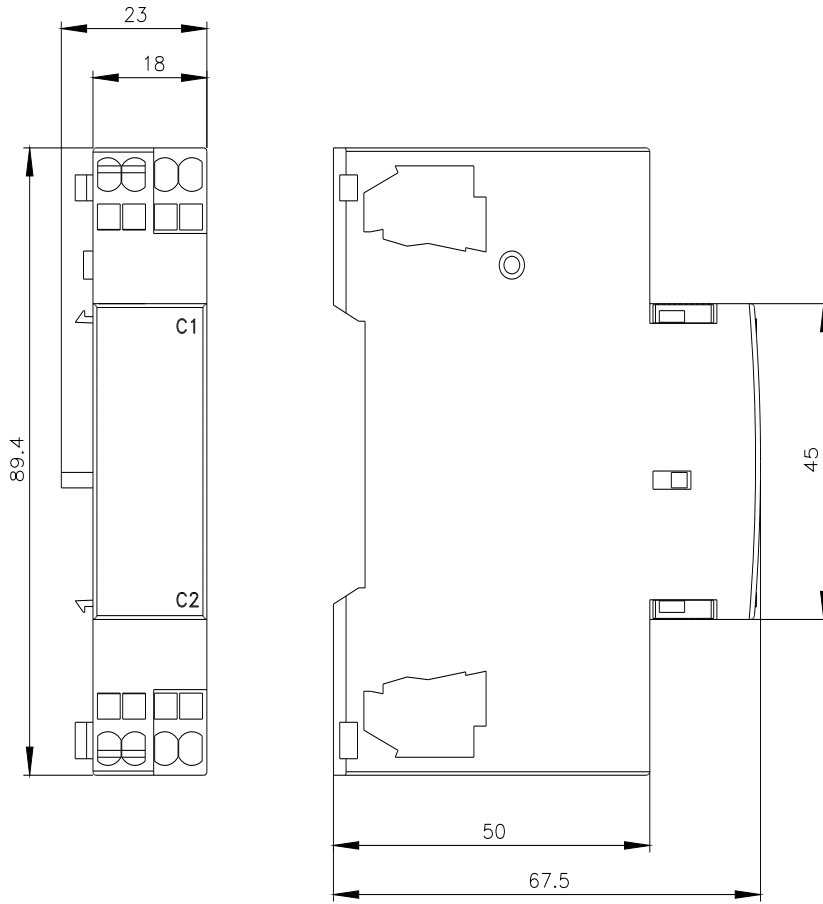


[Special Test Certificate](#)

[Environmental Confirmations](#)

**Further information**

- Information on the packaging  
<https://support.industry.siemens.com/cs/ww/en/view/109813875>
- Information for data generation and storage  
<https://support.industry.siemens.com/cs/ww/en/view/109995012>
- Information- and Downloadcenter (Catalogs, Brochures,...)  
<https://www.siemens.com/ic10>
- Industry Mall (Online ordering system)  
<https://mall.industry.siemens.com/mall/en/en/Catalog/product?mlfb=3RV2922-2CV1>
- Cax online generator  
<https://support.automation.siemens.com/WW/CAXorder/default.aspx?lang=en&mlfb=3RV2922-2CV1>
- Service&Support (Manuals, Certificates, Characteristics, FAQs,...)  
<https://support.industry.siemens.com/cs/ww/en/ps/3RV2922-2CV1>
- Image database (product images, 2D dimension drawings, 3D models, device circuit diagrams, EPLAN macros, ...)  
[https://www.automation.siemens.com/bilddb/cax\\_de.aspx?mlfb=3RV2922-2CV1&lang=en](https://www.automation.siemens.com/bilddb/cax_de.aspx?mlfb=3RV2922-2CV1&lang=en)



last modified:

4/2/2025 