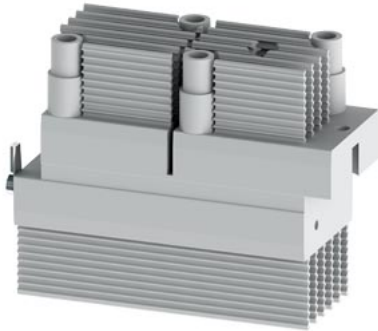


Power semiconductor module 600 V, for 3RW4074, 280 A



product designation	Power semiconductor module		
product type designation	3RW47		
General technical data			
Substance Prohibitance (Date)	05/01/2012		
Weight	1.28 kg		
Approvals Certificates			
General Product Approval	EMV	other	Environment



[KC](#)



[Confirmation](#)

[Environmental Confirmations](#)

Further information

- Information on the packaging <https://support.industry.siemens.com/cs/ww/en/view/109813875>
- Information for data generation and storage <https://support.industry.siemens.com/cs/ww/en/view/109995012>
- Information- and Downloadcenter (Catalogs, Brochures,...) <https://www.siemens.com/ic10>
- Industry Mall (Online ordering system) <https://mall.industry.siemens.com/mall/en/en/Catalog/product?mlfb=3RW4774-0LB00>
- Cax online generator <https://support.automation.siemens.com/WW/CAXorder/default.aspx?lang=en&mlfb=3RW4774-0LB00>
- Service&Support (Manuals, Certificates, Characteristics, FAQs,...) <https://support.industry.siemens.com/cs/ww/en/ps/3RW4774-0LB00>
- Image database (product images, 2D dimension drawings, 3D models, device circuit diagrams, EPLAN macros, ...) https://www.automation.siemens.com/bilddb/cax_de.aspx?mlfb=3RW4774-0LB00&lang=en
- Characteristic: Tripping characteristics, I²t, Let-through current <https://support.industry.siemens.com/cs/ww/en/ps/3RW4774-0LB00/char>
- Characteristic: Installation altitude <https://www.automation.siemens.com/bilddb/index.aspx?view=Search&mlfb=3RW4774-0LB00&objecttype=14&gridview=view1>
- Simulation Tool for Soft Starters (STS) <https://support.industry.siemens.com/cs/ww/en/view/101494917>

last modified:

4/2/2025

