

Siemens
EcoTech



SIRIUS soft starter 200-480 V 93 A, 110-250 V AC Screw terminals



product brand name	SIRIUS
product category	Hybrid switching devices
product designation	Soft starter
product type designation	3RW55
manufacturer's article number	<ul style="list-style-type: none"> • of high feature HMI module usable 3RW5980-0HF00 • of communication module PROFINET standard usable 3RW5980-0CS00 • of communication module PROFINET high-feature usable 3RW5950-0CH00 • of communication module PROFIBUS usable 3RW5980-0CP00 • of communication module Modbus TCP usable 3RW5980-0CT00 • of communication module Modbus RTU usable 3RW5980-0CR00 • of communication module Ethernet/IP 3RW5980-0CE00 • of circuit breaker usable at 400 V 3VA2216-7MN32-0AA0; Type of coordination 1, Iq = 15 kA, CLASS 10 • of circuit breaker usable at 500 V 3VA2216-7MN32-0AA0; Type of coordination 1, Iq = 10 kA, CLASS 10 • of circuit breaker usable at 400 V at inside-delta circuit 3VA2220-7MN32-0AA0; Type of coordination 1, Iq = 15 kA, CLASS 10 • of circuit breaker usable at 500 V at inside-delta circuit 3VA2220-7MN32-0AA0; Type of coordination 1, Iq = 10 kA, CLASS 10 • of the gG fuse usable up to 690 V 3NA3136-6; Type of coordination 1, Iq = 65 kA • of the gG fuse usable at inside-delta circuit up to 500 V 3NA3136-6; Type of coordination 1, Iq = 65 kA • of full range R fuse link for semiconductor protection usable up to 690 V 3NE1224-0; Type of coordination 2, Iq = 65 kA • of back-up R fuse link for semiconductor protection usable up to 690 V 3NE3227; Type of coordination 2, Iq = 65 kA

General technical data	
starting voltage [%]	20 ... 100 %
stopping voltage [%]	50 %; non-adjustable
start-up ramp time of soft starter	0 ... 360 s
ramp-down time of soft starter	0 ... 360 s
start torque [%]	10 ... 100 %
stopping torque [%]	10 ... 100 %
torque limitation [%]	20 ... 200 %
current limiting value [%] adjustable	125 ... 800 %
breakaway voltage [%] adjustable	40 ... 100 %
breakaway time adjustable	0 ... 2 s
number of parameter sets	3
accuracy class	5 (based on IEC 61557-12)
certificate of suitability	
• CE marking	Yes
• UL approval	Yes

<ul style="list-style-type: none"> • CSA approval 	Yes
product component	
<ul style="list-style-type: none"> • HMI-High Feature 	Yes
<ul style="list-style-type: none"> • is supported HMI-High Feature 	Yes
product feature integrated bypass contact system	Yes
number of controlled phases	3
current unbalance limiting value [%]	10 ... 60 %
ground-fault monitoring limiting value [%]	10 ... 95 %
buffering time in the event of power failure	
<ul style="list-style-type: none"> • for main current circuit 	100 ms
<ul style="list-style-type: none"> • for control circuit 	100 ms
idle time adjustable	0 ... 255 s
insulation voltage rated value	480 V
degree of pollution	3, acc. to IEC 60947-4-2
impulse voltage rated value	6 kV
blocking voltage of the thyristor maximum	1 400 V
service factor	1.15
surge voltage resistance rated value	6 kV
maximum permissible voltage for protective separation	
<ul style="list-style-type: none"> • between main and auxiliary circuit 	480 V; does not apply for thermistor connection
shock resistance	15 g / 11 ms, from 6 g / 11 ms with potential contact lifting
vibration resistance	15 mm up to 6 Hz; 2 g up to 500 Hz
recovery time after overload trip adjustable	60 ... 1 800 s
utilization category according to IEC 60947-4-2	AC 53a
reference code according to IEC 81346-2	Q
Substance Prohibitance (Date)	02/15/2018
SVHC substance name	Lead - 7439-92-1 Lead monoxide (lead oxide) - 1317-36-8 2,2',6,6'-tetrabromo-4,4'-isopropylidenediphenol - 79-94-7 6,6'-di-tert-butyl-2,2'-methylenedi-p-cresol - 119-47-1 2-methyl-1-(4-methylthiophenyl)-2-morpholinopropan-1-one - 71868-10-5 Dibutylbis(pentane-2,4-dionato-O,O')tin - 22673-19-4 Lead titanium trioxide - 12060-00-3
Weight	8.235 kg
product function	
<ul style="list-style-type: none"> • ramp-up (soft starting) 	Yes
<ul style="list-style-type: none"> • ramp-down (soft stop) 	Yes
<ul style="list-style-type: none"> • breakaway pulse 	Yes
<ul style="list-style-type: none"> • adjustable current limitation 	Yes
<ul style="list-style-type: none"> • creep speed in both directions of rotation 	Yes
<ul style="list-style-type: none"> • pump ramp down 	Yes
<ul style="list-style-type: none"> • DC braking 	Yes
<ul style="list-style-type: none"> • motor heating 	Yes
<ul style="list-style-type: none"> • min/max pointer 	Yes
<ul style="list-style-type: none"> • trace function 	Yes
<ul style="list-style-type: none"> • intrinsic device protection 	Yes
<ul style="list-style-type: none"> • motor overload protection 	Yes; Full motor protection (thermistor motor protection and electronic motor overload protection) / When using the motor overload protection according to ATEX, an upstream contactor is required in inside-delta circuit.
<ul style="list-style-type: none"> • evaluation of thermistor motor protection 	Yes; Type A PTC or Klixon / Thermoclick
<ul style="list-style-type: none"> • inside-delta circuit 	Yes
<ul style="list-style-type: none"> • auto-RESET 	Yes
<ul style="list-style-type: none"> • manual RESET 	Yes
<ul style="list-style-type: none"> • remote reset 	Yes
<ul style="list-style-type: none"> • communication function 	Yes
<ul style="list-style-type: none"> • operating measured value display 	Yes
<ul style="list-style-type: none"> • event list 	Yes
<ul style="list-style-type: none"> • error logbook 	Yes
<ul style="list-style-type: none"> • via software parameterizable 	Yes
<ul style="list-style-type: none"> • via software configurable 	Yes
<ul style="list-style-type: none"> • screw terminal 	Yes
<ul style="list-style-type: none"> • spring-loaded terminal 	No
<ul style="list-style-type: none"> • PROFInergy 	Yes; in connection with the PROFINET Standard and PROFINET High-Feature

<ul style="list-style-type: none"> ● firmware update ● removable terminal for control circuit ● voltage ramp ● torque control ● combined braking ● analog output ● programmable control inputs/outputs ● condition monitoring ● automatic parameterisation ● application wizards ● alternative run-down ● emergency operation mode ● reversing operation ● soft starting at heavy starting conditions 	communication modules Yes Yes Yes Yes Yes Yes; 4 ... 20 mA (default) / 0 ... 10 V Yes Yes Yes Yes Yes Yes Yes Yes
Power Electronics	
operational current	
<ul style="list-style-type: none"> ● at 40 °C rated value ● at 40 °C rated value minimum ● at 50 °C rated value ● at 60 °C rated value 	93 A 19 A 82.5 A 75.5 A
operational current at inside-delta circuit	
<ul style="list-style-type: none"> ● at 40 °C rated value ● at 50 °C rated value ● at 60 °C rated value 	161 A 143 A 131 A
operating voltage	
<ul style="list-style-type: none"> ● rated value ● at inside-delta circuit rated value 	200 ... 480 V 200 ... 480 V
relative negative tolerance of the operating voltage	-15 %
relative positive tolerance of the operating voltage	10 %
relative negative tolerance of the operating voltage at inside-delta circuit	-15 %
relative positive tolerance of the operating voltage at inside-delta circuit	10 %
operating power for 3-phase motors	
<ul style="list-style-type: none"> ● at 230 V at 40 °C rated value ● at 230 V at inside-delta circuit at 40 °C rated value ● at 400 V at 40 °C rated value ● at 400 V at inside-delta circuit at 40 °C rated value 	22 kW 45 kW 45 kW 90 kW
Operating frequency 1 rated value	50 Hz
Operating frequency 2 rated value	60 Hz
relative negative tolerance of the operating frequency	-10 %
relative positive tolerance of the operating frequency	10 %
minimum load [%]	10 %; Relative to set le
power loss [W] for rated value of the current at AC	
<ul style="list-style-type: none"> ● at 40 °C after startup ● at 50 °C after startup ● at 60 °C after startup 	28 W 25 W 23 W
power loss [W] at AC at current limitation 350 %	
<ul style="list-style-type: none"> ● at 40 °C during startup ● at 50 °C during startup ● at 60 °C during startup 	1 258 W 1 065 W 948 W
type of the motor protection	Electronic, tripping in the event of thermal overload of the motor
Control circuit/ Control	
type of voltage of the control supply voltage	AC
control supply voltage at AC	
<ul style="list-style-type: none"> ● at 50 Hz ● at 60 Hz 	110 ... 250 V 110 ... 250 V
relative negative tolerance of the control supply voltage at AC at 50 Hz	-15 %
relative positive tolerance of the control supply voltage at AC at 50 Hz	10 %

relative negative tolerance of the control supply voltage at AC at 60 Hz	-15 %
relative positive tolerance of the control supply voltage at AC at 60 Hz	10 %
control supply voltage frequency	50 ... 60 Hz
relative negative tolerance of the control supply voltage frequency	-10 %
relative positive tolerance of the control supply voltage frequency	10 %
control supply current in standby mode rated value	100 mA
holding current in bypass operation rated value	180 mA
inrush current by closing the bypass contacts maximum	0.8 A
inrush current peak at application of control supply voltage maximum	43 A
duration of inrush current peak at application of control supply voltage	1.6 ms
design of the overvoltage protection	Varistor
design of short-circuit protection for control circuit	4 A gG fuse (I _{cu} =1 kA), 6 A quick-acting fuse (I _{cu} =1 kA), C1 miniature circuit breaker (I _{cu} = 600 A), C6 miniature circuit breaker (I _{cu} = 300 A); Is not part of scope of supply

Inputs/ Outputs	
number of digital inputs	4
• parameterizable	4
• number of digital outputs	4
• number of digital outputs parameterizable	3
• number of digital outputs not parameterizable	1
digital output version	3 normally-open contacts (NO) / 1 changeover contact (CO)
number of analog outputs	1
switching capacity current of the relay outputs	
• at AC-15 at 250 V rated value	3 A
• at DC-13 at 24 V rated value	1 A

Installation/ mounting/ dimensions	
mounting position	Vertical (can be rotated +/- 90° and tilted forward or backward +/- 22.5°)
fastening method	screw fixing
height	306 mm
width	185 mm
depth	203 mm
required spacing with side-by-side mounting	
• forwards	10 mm
• backwards	0 mm
• upwards	100 mm
• downwards	75 mm
• at the side	5 mm
weight without packaging	7.15 kg

Connections/ Terminals	
type of electrical connection	
• for main current circuit	box terminal
• for control circuit	screw-type terminals
width of connection bar maximum	25 mm
wire length for thermistor connection	
• with conductor cross-section = 0.5 mm ² maximum	50 m
• with conductor cross-section = 1.5 mm ² maximum	150 m
• with conductor cross-section = 2.5 mm ² maximum	250 m
type of connectable conductor cross-sections for main contacts for box terminal	
• using the front clamping point solid	1x (2.5 ... 16 mm ²)
• using the front clamping point finely stranded with core end processing	1x (2.5 ... 50 mm ²)
• using the front clamping point stranded	1x (10 ... 70 mm ²)
• using the back clamping point solid	1x (2.5 ... 16 mm ²)
• r box terminal using the back clamping point	1x (10 ... 2/0)
• using both clamping points solid	2x (2.5 ... 16 mm ²)
• using both clamping points finely stranded with core end	2x (2.5 ... 35 mm ²)

processing	
<ul style="list-style-type: none"> • using both clamping points stranded 	2x (6 ... 16 mm ²), 2x (10 ... 50 mm ²)
<ul style="list-style-type: none"> • using the back clamping point finely stranded with core end processing 	1x (2.5 ... 50 mm ²)
<ul style="list-style-type: none"> • using the back clamping point stranded 	1x (10 ... 70 mm ²)
type of connectable conductor cross-sections	
<ul style="list-style-type: none"> • for control circuit solid 	1x (0.5 ... 4.0 mm ²), 2x (0.5 ... 2.5 mm ²)
<ul style="list-style-type: none"> • for control circuit finely stranded with core end processing 	1x (0.5 ... 2.5 mm ²), 2x (0.5 ... 1.5 mm ²)
<ul style="list-style-type: none"> • for AWG cables for control circuit solid 	1x (20 ... 12), 2x (20 ... 14)
wire length	
<ul style="list-style-type: none"> • between soft starter and motor maximum 	800 m
<ul style="list-style-type: none"> • at the digital inputs at DC maximum 	1 000 m
tightening torque	
<ul style="list-style-type: none"> • for main contacts with screw-type terminals 	4.5 ... 6 N·m
<ul style="list-style-type: none"> • for auxiliary and control contacts with screw-type terminals 	0.8 ... 1.2 N·m
tightening torque [lbf·in]	
<ul style="list-style-type: none"> • for main contacts with screw-type terminals 	40 ... 53 lbf·in
<ul style="list-style-type: none"> • for auxiliary and control contacts with screw-type terminals 	7 ... 10.3 lbf·in
Ambient conditions	
installation altitude at height above sea level maximum	5 000 m; Derating as of 1000 m, see catalog
ambient temperature	
<ul style="list-style-type: none"> • during operation 	-25 ... +60 °C; Please observe derating at temperatures of 40 °C or above
<ul style="list-style-type: none"> • during storage and transport 	-40 ... +80 °C
environmental category	
<ul style="list-style-type: none"> • during operation according to IEC 60721 	3K6 (no ice formation, only occasional condensation), 3C3 (no salt mist), 3S2 (sand must not get into the devices), 3M6
<ul style="list-style-type: none"> • during storage according to IEC 60721 	1K6 (only occasional condensation), 1C2 (no salt mist), 1S2 (sand must not get inside the devices), 1M4
<ul style="list-style-type: none"> • during transport according to IEC 60721 	2K2, 2C1, 2S1, 2M2 (max. fall height 0.3 m)
Environmental footprint	
global warming potential [CO2 eq] total	399 kg
global warming potential [CO2 eq] during manufacturing	92.6 kg
global warming potential [CO2 eq] during sales	2.37 kg
global warming potential [CO2 eq] during operation	324 kg
global warming potential [CO2 eq] after end of life	-19.4 kg
Siemens Eco Profile (SEP)	Siemens EcoTech
Electromagnetic compatibility	
EMC emitted interference	acc. to IEC 60947-4-2: Class A, Class B on request
Communication/ Protocol	
communication module is supported	
<ul style="list-style-type: none"> • PROFINET standard 	Yes
<ul style="list-style-type: none"> • PROFINET high-feature 	Yes
<ul style="list-style-type: none"> • EtherNet/IP 	Yes
<ul style="list-style-type: none"> • Modbus RTU 	Yes
<ul style="list-style-type: none"> • Modbus TCP 	Yes
<ul style="list-style-type: none"> • PROFIBUS 	Yes
UL/CSA ratings	
manufacturer's article number	
<ul style="list-style-type: none"> • of circuit breaker usable for Standard Faults <ul style="list-style-type: none"> — at 460/480 V according to UL — 60/480 V according to UL — at 460/480 V at inside-delta circuit according to UL — 60/480 V at inside-delta circuit according to UL — at 575/600 V according to UL — 75/600 V at inside-delta circuit according to UL — at 575/600 V at inside-delta circuit according to UL 	Siemens type: 3VA51, max. 125 A; Iq = 10 kA Siemens type: 3VA51, max. 125 A; Iq max = 65 kA Siemens type: 3VA51, max. 125 A; Iq = 10 kA Siemens type: 3VA51, max. 125 A; Iq max = 65 kA Siemens type: 3VA51, max. 125 A; Iq = 10 kA Siemens type: 3VA51, max. 125 A; Iq max = 65 kA Siemens type: 3VA51, max. 125 A; Iq = 10 kA
<ul style="list-style-type: none"> • of the fuse <ul style="list-style-type: none"> — usable for Standard Faults up to 575/600 V according to UL — usable for High Faults up to 575/600 V according to 	Type: Class RK5 / K5, max. 300 A; Iq = 10 kA Type: Class J / L, max. 250 A; Iq = 100 kA

UL — usable for Standard Faults at inside-delta circuit up to 575/600 V according to UL — usable for High Faults at inside-delta circuit up to 575/600 V according to UL	Type: Class RK5 / K5, max. 300 A; Iq = 10 kA Type: Class J / L, max. 250 A; Iq = 100 kA
operating power [hp] for 3-phase motors	
• at 200/208 V at 50 °C rated value	25 hp
• at 220/230 V at 50 °C rated value	30 hp
• at 460/480 V at 50 °C rated value	60 hp
• at 200/208 V at inside-delta circuit at 50 °C rated value	40 hp
• at 220/230 V at inside-delta circuit at 50 °C rated value	50 hp
• at 460/480 V at inside-delta circuit at 50 °C rated value	100 hp
contact rating of auxiliary contacts according to UL	R300-B300

Electrical Safety	
protection class IP on the front according to IEC 60529	IP00; IP20 with cover
touch protection on the front according to IEC 60529	finger-safe, for vertical contact from the front with cover

ATEX	
Safety Integrity Level (SIL) according to IEC 61508 relating to ATEX	SIL 1
PFHD with high demand rate according to IEC 61508 relating to ATEX	5E-7 1/h
PFDavg with low demand rate according to IEC 61508 relating to ATEX	0.008
hardware fault tolerance according to IEC 61508 relating to ATEX	0
T1 value for proof test interval or service life according to IEC 61508 relating to ATEX	3 a
certificate of suitability	
• ATEX	Yes
• IECEx	Yes
• according to ATEX directive 2014/34/EU	BVS 18 ATEX F 003 X
type of protection according to ATEX directive 2014/34/EU	II (2)G [Ex eb Gb] [Ex db Gb] [Ex pxb Gb], II (2)D [Ex tb Db] [Ex pxb Db], I (M2) [Ex db Mb]

Approvals Certificates	
General Product Approval	EMV



EMV	For use in hazardous locations	Test Certificates	Maritime application
KC	IECEX	ATEX	
			ABS
			BUREAU VERITAS

Maritime application	other	Environment
LRS	PRS	

Environment
Environmental Confirmations

Further information

Information on the packaging

<https://support.industry.siemens.com/cs/ww/en/view/109813875>

Information for data generation and storage

<https://support.industry.siemens.com/cs/ww/en/view/109995012>

Information- and Downloadcenter (Catalogs, Brochures,...)

<https://www.siemens.com/ic10>

Industry Mall (Online ordering system)

<https://mall.industry.siemens.com/mall/en/en/Catalog/product?mlfb=3RW5527-1HA14>

Cax online generator

<https://support.automation.siemens.com/WW/CAXorder/default.aspx?lang=en&mlfb=3RW5527-1HA14>

Service&Support (Manuals, Certificates, Characteristics, FAQs,...)

<https://support.industry.siemens.com/cs/ww/en/ps/3RW5527-1HA14>

Image database (product images, 2D dimension drawings, 3D models, device circuit diagrams, EPLAN macros, ...)

https://www.automation.siemens.com/bilddb/cax_de.aspx?mlfb=3RW5527-1HA14&lang=en

Characteristic: Tripping characteristics, I²t, Let-through current

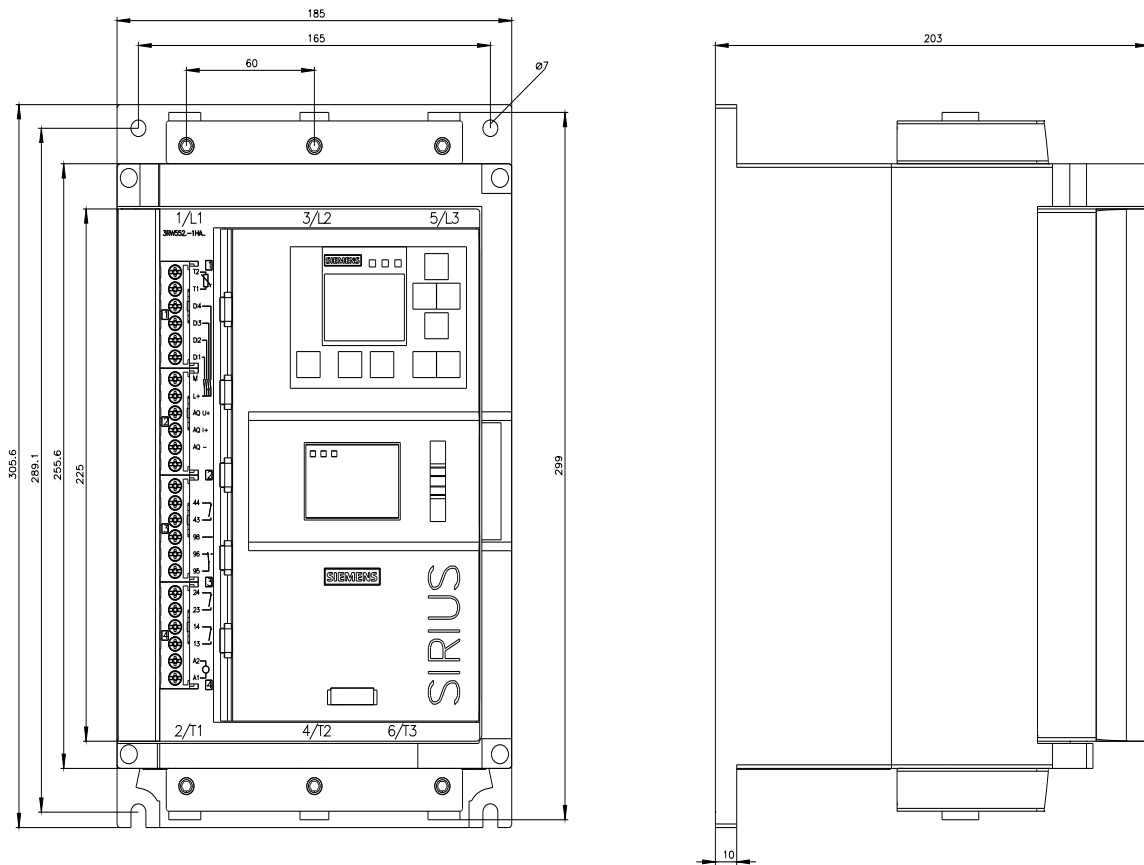
<https://support.industry.siemens.com/cs/ww/en/ps/3RW5527-1HA14/char>

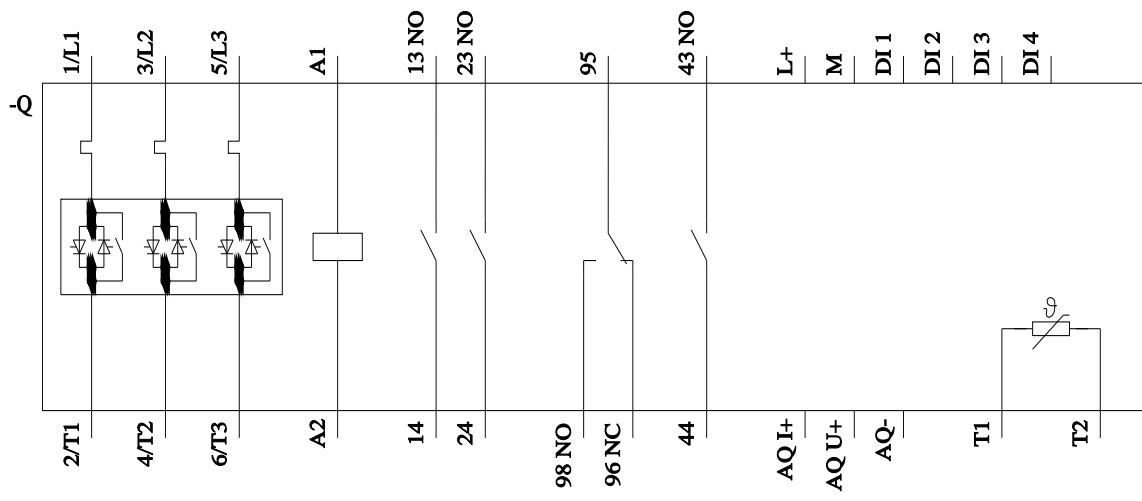
Characteristic: Installation altitude

<https://www.automation.siemens.com/bilddb/index.aspx?view=Search&mlfb=3RW5527-1HA14&objecttype=14&gridview=view1>

Simulation Tool for Soft Starters (STS)

<https://support.industry.siemens.com/cs/ww/en/view/101494917>





last modified:

9/5/2025 