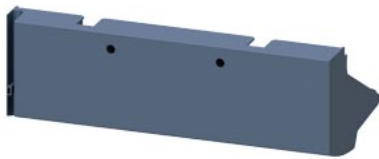


Terminal cover for 3RW55 Size 5



product designation	Terminal covers
product type designation	3RW59
manufacturer's article number of soft starter	<a href="#">3RW555</a>

General technical data	
Substance Prohibittance (Date)	02/15/2018
Weight	900 g

Ambient conditions	
ambient temperature during storage	-40 ... +80 °C

Approvals Certificates			
General Product Approval	EMV	For use in hazardous locations	Maritime application



[KC](#)

[Miscellaneous](#)



Maritime application	other	Environment
----------------------	-------	-------------



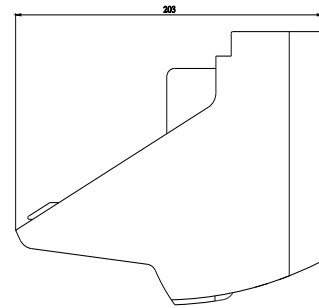
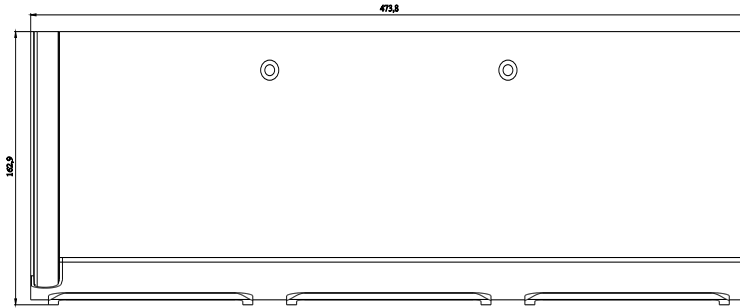
[Confirmation](#)



[Environmental Confirmations](#)

### Further information

- Information on the packaging  
<https://support.industry.siemens.com/cs/ww/en/view/109813875>
- Information for data generation and storage  
<https://support.industry.siemens.com/cs/ww/en/view/109995012>
- Information- and Downloadcenter (Catalogs, Brochures,...)  
<https://www.siemens.com/ic10>
- Industry Mall (Online ordering system)  
<https://mall.industry.siemens.com/mall/en/en/Catalog/product?mlfb=3RW5955-0TC20>
- Cax online generator  
<https://support.automation.siemens.com/WW/CAXorder/default.aspx?lang=en&mlfb=3RW5955-0TC20>
- Service&Support (Manuals, Certificates, Characteristics, FAQs,...)  
<https://support.industry.siemens.com/cs/ww/en/ps/3RW5955-0TC20>
- Image database (product images, 2D dimension drawings, 3D models, device circuit diagrams, EPLAN macros, ...)  
[https://www.automation.siemens.com/bilddb/cax\\_de.aspx?mlfb=3RW5955-0TC20&lang=en](https://www.automation.siemens.com/bilddb/cax_de.aspx?mlfb=3RW5955-0TC20&lang=en)
- Characteristic: Tripping characteristics, I<sup>2</sup>t, Let-through current  
<https://support.industry.siemens.com/cs/ww/en/ps/3RW5955-0TC20/char>
- Characteristic: Installation altitude  
<https://www.automation.siemens.com/bilddb/index.aspx?view=Search&mlfb=3RW5955-0TC20&objecttype=14&gridview=view1>



---

last modified:

4/2/2025 

