

HMI module Standard



product brand name	SIRIUS	
product category	HMI modules	
product designation	HMI module	
design of the product	Standard	
product type designation	3RW59	
manufacturer's article number of soft starter		
•	3RW50	
•	3RW51	
•	3RW52	
Substance Prohibittance (Date)	02/15/2018	
SVHC substance name	Lead - 7439-92-1 Lead monoxide (lead oxide) - 1317-36-8 2-methyl-1-(4-methylthiophenyl)-2-morpholinopropan-1-one - 71868-10-5 Melamine - 108-78-1	
Weight	59 g	
<b>Installation/ mounting/ dimensions</b>		
mounting position	with vertical mounting surface +/-90° rotatable, with vertical mounting surface +/- 22.5° tiltable to the front and back	
fastening method	snap-on mounting	
height	36 mm	
width	96 mm	
depth	32 mm	
<b>Ambient conditions</b>		
ambient temperature		
• during operation	-25 ... +60 °C; Please observe derating at temperatures of 40 °C or above	
• during storage and transport	-40 ... +80 °C	
environmental category		
• during operation according to IEC 60721	3K6 (no ice formation, only occasional condensation), 3C3 (no salt mist), 3S2 (sand must not get into the devices), 3M6	
• during storage according to IEC 60721	1K6 (only occasional condensation), 1C2 (no salt mist), 1S2 (sand must not get inside the devices), 1M4	
• during transport according to IEC 60721	2K2, 2C1, 2S1, 2M2 (max. height of fall 0.8 m)	
<b>Electrical Safety</b>		
protection class IP on the front according to IEC 60529	IP20	
touch protection on the front according to IEC 60529	finger-safe, for vertical contact from the front	
<b>Approvals Certificates</b>		
General Product Approval	EMV	For use in hazardous locations



[KC](#)

[Miscellaneous](#)

Test Certificates

Maritime application

[Type Test Certificates/Test Report](#)



other

Environment



[Confirmation](#)

[Environmental Confirmations](#)

Further information

Information on the packaging

<https://support.industry.siemens.com/cs/ww/en/view/109813875>

Information for data generation and storage

<https://support.industry.siemens.com/cs/ww/en/view/109995012>

Information- and Downloadcenter (Catalogs, Brochures,...)

<https://www.siemens.com/ic10>

Industry Mall (Online ordering system)

<https://mall.industry.siemens.com/mall/en/en/Catalog/product?mlfb=3RW5980-0HS00>

Cax online generator

<https://support.automation.siemens.com/WW/CAXorder/default.aspx?lang=en&mlfb=3RW5980-0HS00>

Service&Support (Manuals, Certificates, Characteristics, FAQs,...)

<https://support.industry.siemens.com/cs/ww/en/ps/3RW5980-0HS00>

Image database (product images, 2D dimension drawings, 3D models, device circuit diagrams, EPLAN macros, ...)

[https://www.automation.siemens.com/bilddb/cax\\_de.aspx?mlfb=3RW5980-0HS00&lang=en](https://www.automation.siemens.com/bilddb/cax_de.aspx?mlfb=3RW5980-0HS00&lang=en)

Characteristic: Tripping characteristics, I<sup>2</sup>t, Let-through current

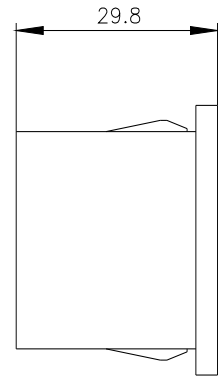
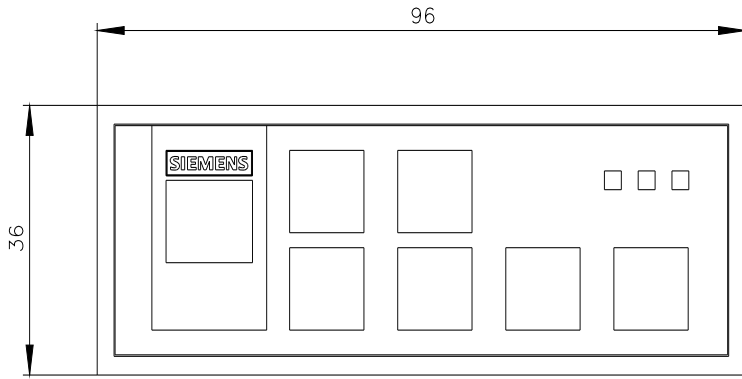
<https://support.industry.siemens.com/cs/ww/en/ps/3RW5980-0HS00/char>

Characteristic: Installation altitude

<https://www.automation.siemens.com/bilddb/index.aspx?view=Search&mlfb=3RW5980-0HS00&objecttype=14&gridview=view1>

Simulation Tool for Soft Starters (STS)

<https://support.industry.siemens.com/cs/ww/en/view/101494917>



---

last modified:

4/2/2025 

