





Basic switch without actuator head Plastic enclosure 50 mm wide ASIsafe integrated AS-i status: 1:F-IN1, 2: F-IN2 3:AS-i/FAULT Slow-action contacts 2 NC with M12 connector 4-pole Channel 1 to NC, Channel 2 to M12 socket on the right




| | |
|--|---|
| product brand name | SIRIUS |
| product designation | Mechanical safety switches |
| product type designation | 3SF12 |
| manufacturer's article number | |
| • of the supplied basic switch | 3SF1244-1KC05-1BA2 |
| suitability for use safety switch | Yes |
| General technical data | |
| product function positive opening | Yes |
| insulation voltage rated value | 30 V |
| degree of pollution | class 3 |
| surge voltage resistance rated value | 0.8 kV |
| shock resistance according to IEC 60068-2-27 | 30g / 11 ms |
| vibration resistance according to IEC 60068-2-6 | 0.35 mm/5g |
| mechanical service life (operating cycles) typical | 15 000 000 |
| reference code according to IEC 81346-2 | B |
| active principle | mechanical |
| repeat accuracy | 0.1 mm |
| Substance Prohibitance (Date) | 03/01/2017 |
| SVHC substance name | Lead - 7439-92-1 Lead monoxide (lead oxide) - 1317-36-8 6,6'-di-tert-butyl-2,2'-methylenedi-p-cresol - 119-47-1 Imidazolidine-2-thione (2-imidazoline-2-thiol) - 96-45-7 Diboron trioxide - 1303-86-2 |
| Weight | 0.131 kg |
| minimum actuating force in directions of actuation | 20 N |
| length of the sensor | 60.7 mm |
| width of the sensor | 50 mm |
| Ambient conditions | |
| ambient temperature | |
| • during operation | -25 ... +60 °C |
| • during storage | -40 ... +80 °C |
| design of the switching contact | mechanical |
| number of NC contacts for auxiliary contacts | 2 |
| number of NO contacts for auxiliary contacts | 0 |
| Enclosure | |
| design of the housing | block, wide |
| material of the enclosure | plastic |
| design of the housing according to standard | No |
| Drive Head | |
| design of the actuating element | Other, without, ASi_basic switch with plug |
| design of the switching function | positive opening |

| | |
|---|--|
| circuit principle | snap-action contacts |
| number of switching contacts safety-related | 1 |
| design of plug-in connection | M12 plug, 4-pole: Pin 1 = ASI+ , Pin 2 = not assigned, Pin 3= ASI-, Pin 4 = not assigned |
| Installation/ mounting/ dimensions | |
| mounting position | any |
| fastening method | screw fixing |
| Connections/ Terminals | |
| type of electrical connection | M12 plug, fixed, 4-pole |
| Supply voltage | |
| type of voltage of the supply voltage of the optional LED display | DC |
| supply voltage of LED | 24 V |
| design of the interface for safety-related communication | ASIsafe via M12 plug, channel 2 looped through to M12 socket on the right |

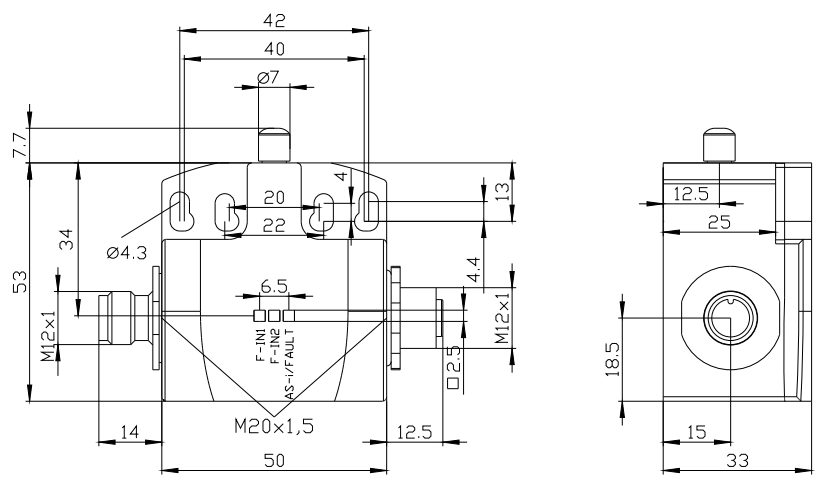
Approvals Certificates

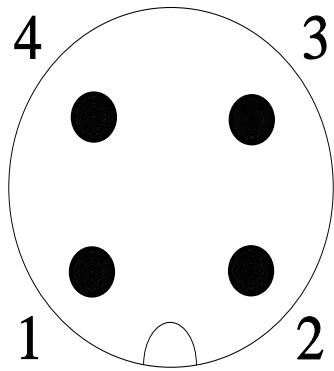
| | |
|---|---|
| General Product Approval | Test Certificates |
|     | Type Test Certificates/Test Report Type Test Certificates/Test Report |

| | |
|--|--|
| other | Environment |
|  | Confirmation Environmental Confirmations |

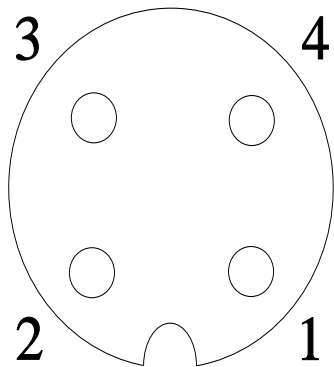
Further information

Information on the packaging
<https://support.industry.siemens.com/cs/ww/en/view/109813875>
Information for data generation and storage
<https://support.industry.siemens.com/cs/ww/en/view/109995012>
Information- and Downloadcenter (Catalogs, Brochures,...)
<https://www.siemens.com/ic10>
Industry Mall (Online ordering system)
<https://mall.industry.siemens.com/mall/en/en/Catalog/product?mlfb=3SF1244-1LC05-1BA2>
Cax online generator
<https://support.automation.siemens.com/WW/CAXorder/default.aspx?lang=en&mlfb=3SF1244-1LC05-1BA2>
Service&Support (Manuals, Certificates, Characteristics, FAQs,...)
<https://support.industry.siemens.com/cs/ww/en/ps/3SF1244-1LC05-1BA2>
Image database (product images, 2D dimension drawings, 3D models, device circuit diagrams, EPLAN macros, ...)
https://www.automation.siemens.com/bilddb/cax_de.aspx?mlfb=3SF1244-1LC05-1BA2&lang=en





| | | |
|---|---|-------|
| 1 | → | ASI + |
| 2 | → | n. c. |
| 3 | → | ASI - |
| 4 | → | n. c. |



| | | |
|---|---|-------|
| 1 | → | Ch 2 |
| 2 | → | Ch 2 |
| 3 | → | n. c. |
| 4 | → | n. c. |

last modified:

4/2/2025