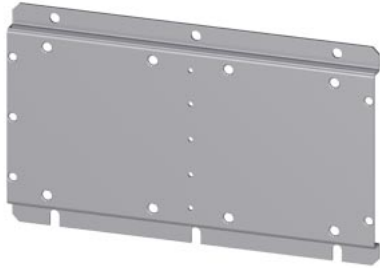





base plate for mounting combination of two contactors (2x 3TF68) for reversing



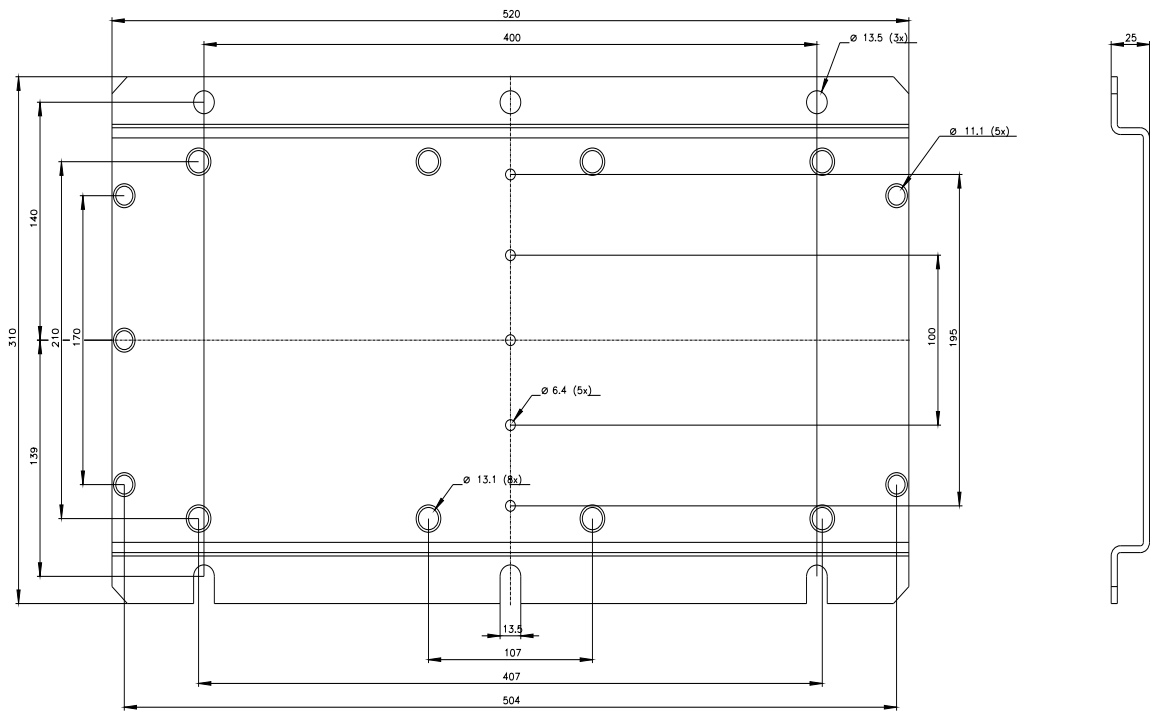
product category	Miscellaneous accessories
product designation	Base plate
General technical data	
Substance Prohibitance (Date)	07/01/2006
Weight	5.545 kg

Approvals Certificates

General Product Approval	Test Certificates	other	Environment
 <small>EG-Konf.</small>		Type Test Certificates/Test Report	
		Confirmation	Environmental Confirmations

Further information

- Information on the packaging
<https://support.industry.siemens.com/cs/ww/en/view/109813875>
- Information for data generation and storage
<https://support.industry.siemens.com/cs/ww/en/view/109995012>
- Information- and Downloadcenter (Catalogs, Brochures,...)
<https://www.siemens.com/ic10>
- Industry Mall (Online ordering system)
<https://mall.industry.siemens.com/mall/en/en/Catalog/product?mlfb=3TX7681-1A>
- Cax online generator
<https://support.automation.siemens.com/WW/CAXorder/default.aspx?lang=en&mlfb=3TX7681-1A>
- Service&Support (Manuals, Certificates, Characteristics, FAQs,...)
<https://support.industry.siemens.com/cs/ww/en/ps/3TX7681-1A>
- Image database (product images, 2D dimension drawings, 3D models, device circuit diagrams, EPLAN macros, ...)
https://www.automation.siemens.com/bilddb/cax_de.aspx?mlfb=3TX7681-1A&lang=en



last modified:

5/9/2025 