



!!! product phase-out !!! the preferred successor is 3UG5642-2CW30 digital monitoring relay voltage monitoring, 22.5 mm from 10 to 600 V AC/DC overshoot and undershoot supply voltage: 24 V AC/DC 50 to 60 Hz DC and AC without electrical isolation to measuring circuit noise pulses delay 0.1 to 20 s hysteresis 0.1 to 300 V 1 changeover contact with or without fault buffer spring-loaded connection system

product brand name	SIRIUS
product designation	Voltage monitoring relay with digital setting
product type designation	3UG4
General technical data	
product function	Voltage monitoring relay
design of the display	LCD
insulation voltage for overvoltage category III according to IEC 60664	
• with degree of pollution 3 rated value	690 V
type of voltage	
• for monitoring	AC/DC
• of the control supply voltage	AC/DC
surge voltage resistance rated value	4 kV
maximum permissible voltage for protective separation	
• between auxiliary and auxiliary circuit	300 V
• between control and auxiliary circuit	300 V
shock resistance according to IEC 60068-2-27	sinusoidal half-wave 15g / 11 ms
vibration resistance according to IEC 60068-2-6	1 ... 6 Hz: 15 mm, 6 ... 500 Hz: 2g
mechanical service life (operating cycles) typical	10 000 000
electrical endurance (operating cycles) at AC-15 at 230 V typical	100 000
thermal current of the switching element with contacts maximum	5 A
reference code according to IEC 81346-2	K
relative repeat accuracy	1 %
Substance Prohibitance (Date)	05/01/2012
SVHC substance name	Lead - 7439-92-1 Lead monoxide (lead oxide) - 1317-36-8 6,6'-di-tert-butyl-2,2'-methylenedi-p-cresol - 119-47-1
Weight	0.13 kg
Product Function	
product function	
• undervoltage detection	Yes
• overvoltage detection	Yes
• overvoltage detection 1 phase	Yes
• overvoltage detection 3 phase	No
• overvoltage detection DC	Yes
• undervoltage detection 1 phase	Yes
• undervoltage detection 3 phases	No
• undervoltage detection DC	Yes
• voltage window recognition 1 phase	Yes

• voltage window recognition 3 phase	No
• voltage window recognition DC	Yes
• adjustable open/closed-circuit current principle	Yes
• external reset	Yes
• auto-RESET	Yes
Control circuit/ Control	
control supply voltage at AC	
• at 50 Hz rated value	24 V
• at 50 Hz rated value	24 ... 240 V
• at 60 Hz rated value	24 V
• at 60 Hz rated value	24 ... 240 V
control supply voltage at DC rated value	24 V
control supply voltage at DC rated value	24 ... 240 V
operating range factor control supply voltage rated value at DC	
• initial value	0.85
• full-scale value	1.15
operating range factor control supply voltage rated value at AC at 50 Hz	
• initial value	0.85
• full-scale value	1.15
operating range factor control supply voltage rated value at AC at 60 Hz	
• initial value	0.85
• full-scale value	1.15
Measuring circuit	
measurable line frequency	40 ... 500 Hz
measurable voltage at AC	10 ... 600 V
measurable voltage at DC	10 ... 600 V
adjustable response delay time	
• when starting	20 s
• with lower or upper limit violation	0.1 ... 20 s
accuracy of digital display	+/-1 digit
relative temperature-related measurement deviation	0.1 %
Precision	
relative metering precision	5 %
Auxiliary circuit	
number of NC contacts delayed switching	0
number of NO contacts delayed switching	0
number of CO contacts delayed switching	1
operating frequency with 3RT2 contactor maximum	5 000 1/h
Main circuit	
number of poles for main current circuit	1
operating voltage	
• at AC	
— at 50 Hz rated value	240 ... 240 V
— at 60 Hz rated value	240 ... 240 V
• at DC rated value	24 ... 24 V
ampacity of the output relay at AC-15 at 400 V at 50/60 Hz	3 A
ampacity of the output relay at DC-13	
• at 24 V	1 A
• at 125 V	0.2 A
• at 250 V	0.1 A
operational current at 17 V minimum	5 mA
continuous current of the DIAZED fuse link of the output relay	4 A
Electromagnetic compatibility	
conducted interference	
• due to burst according to IEC 61000-4-4	2 kV
• due to conductor-earth surge according to IEC 61000-4-5	2 kV

<ul style="list-style-type: none"> • due to conductor-conductor surge according to IEC 61000-4-5 	1 kV
field-based interference according to IEC 61000-4-3	10 V/m
electrostatic discharge according to IEC 61000-4-2	6 kV contact discharge / 8 kV air discharge
Galvanic isolation	
design of the electrical isolation	Protective separation
galvanic isolation	
<ul style="list-style-type: none"> • between input and output 	Yes
<ul style="list-style-type: none"> • between the outputs 	Yes
<ul style="list-style-type: none"> • between the voltage supply and other circuits 	No
Electrical Safety	
protection class IP on the front according to IEC 60529	IP20
Connections/ Terminals	
product component removable terminal for auxiliary and control circuit	Yes
type of electrical connection	spring-loaded terminals
type of connectable conductor cross-sections	
<ul style="list-style-type: none"> • solid 	2x (0.25 ... 1.5 mm ²)
<ul style="list-style-type: none"> • finely stranded with core end processing 	2 x (0.25 ... 1.5 mm ²)
<ul style="list-style-type: none"> • finely stranded without core end processing 	2x (0.25 ... 1.5 mm ²)
<ul style="list-style-type: none"> • for AWG cables solid 	2x (24 ... 16)
<ul style="list-style-type: none"> • for AWG cables stranded 	2x (24 ... 16)
connectable conductor cross-section	
<ul style="list-style-type: none"> • solid 	0.25 ... 1.5 mm ²
<ul style="list-style-type: none"> • finely stranded with core end processing 	0.25 ... 1.5 mm ²
<ul style="list-style-type: none"> • finely stranded without core end processing 	0.25 ... 1.5 mm ²
AWG number as coded connectable conductor cross section	
<ul style="list-style-type: none"> • solid 	24 ... 16
<ul style="list-style-type: none"> • stranded 	24 ... 16
Installation/ mounting/ dimensions	
mounting position	any
fastening method	snap-on mounting
height	94 mm
width	22.5 mm
depth	91 mm
required spacing	
<ul style="list-style-type: none"> • with side-by-side mounting <ul style="list-style-type: none"> — forwards — backwards — upwards — downwards — at the side 	0 mm
<ul style="list-style-type: none"> • for grounded parts <ul style="list-style-type: none"> — forwards — backwards — upwards — at the side — downwards 	0 mm
<ul style="list-style-type: none"> • for live parts <ul style="list-style-type: none"> — forwards — backwards — upwards — at the side 	0 mm
<ul style="list-style-type: none"> • for live parts <ul style="list-style-type: none"> — backwards — upwards — at the side 	0 mm
<ul style="list-style-type: none"> • for live parts <ul style="list-style-type: none"> — upwards — at the side 	0 mm
<ul style="list-style-type: none"> • for live parts <ul style="list-style-type: none"> — at the side 	0 mm
Ambient conditions	
installation altitude at height above sea level maximum	2 000 m
ambient temperature	
<ul style="list-style-type: none"> • during operation 	-25 ... +60 °C
<ul style="list-style-type: none"> • during storage 	-40 ... +85 °C
<ul style="list-style-type: none"> • during transport 	-40 ... +85 °C

Environmental footprint	
Environmental Product Declaration(EPD)	Yes
global warming potential [CO2 eq] total	17.1 kg
global warming potential [CO2 eq] during manufacturing	4.44 kg
global warming potential [CO2 eq] during operation	13.7 kg
global warming potential [CO2 eq] after end of life	-1.06 kg

Approvals Certificates	
General Product Approval	EMV



EMV	Test Certificates	Maritime application	other
KC	Special Test Certificate	Type Test Certificates/Test Report	

other	Railway	Environment
Confirmation	Special Test Certificate	
		Environmental Confirmations

Further information

Information on the packaging

<https://support.industry.siemens.com/cs/ww/en/view/109813875>

Information for data generation and storage

<https://support.industry.siemens.com/cs/ww/en/view/109995012>

Information- and Downloadcenter (Catalogs, Brochures,...)

<https://www.siemens.com/ic10>

Industry Mall (Online ordering system)

<https://mall.industry.siemens.com/mall/en/en/Catalog/product?mlfb=3UG4632-2AA30>

Cax online generator

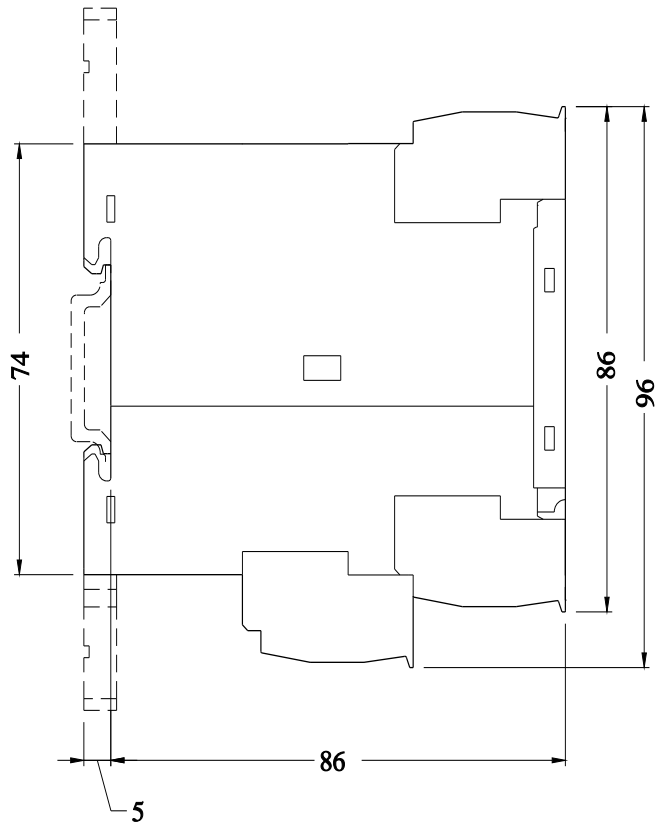
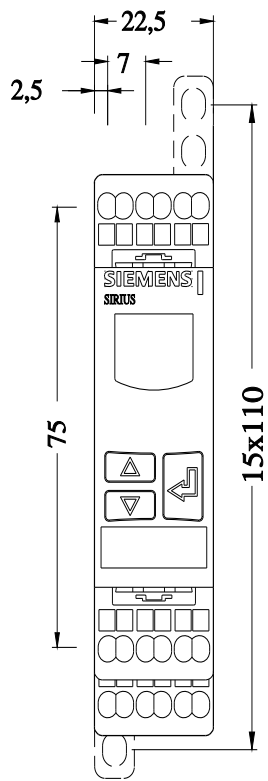
<https://support.automation.siemens.com/WW/CAXorder/default.aspx?lang=en&mlfb=3UG4632-2AA30>

Service&Support (Manuals, Certificates, Characteristics, FAQs,...)

<https://support.industry.siemens.com/cs/ww/en/ps/3UG4632-2AA30>

Image database (product images, 2D dimension drawings, 3D models, device circuit diagrams, EPLAN macros, ...)

https://www.automation.siemens.com/bilddb/cax_de.aspx?mlfb=3UG4632-2AA30&lang=en



last modified:

10/17/2025 