



circuit breaker 3VA5 UL Frame 250 breaking capacity class C 100 kA @ 480 V 4-pole, line protection TM240, ATAM, In=80 A overload protection, 100%-rated Ir=64 A ...80 A short-circuit protection Ii=5...10 x In N conductor unprotected without connection

| Model  |                             |
|--|-----------------------------|
| product brand name   | SENTRON                     |
| product designation  | Molded-case circuit breaker |
| product designation / according to UL file   | CFAS                        |
| design of the product  | System protection           |
| design of the load switch / according to UL 489 / Heating, Air Conditioning, and Refrigeration circuit breaker (HACR Type) | Yes                         |
| design of the load switch / according to UL 489 / High-Intensity-Discharge circuit breaker (HID Type)                      | No                          |
| design of the load switch / according to UL 489 / Switching Duty circuit breaker (SWD Type)                                | No                          |
| design of the overcurrent release  | TM240                       |
| protection function of the overcurrent release   | LI                          |
| number of poles  | 4                           |
| General technical data   |                             |
| insulation voltage / rated value   | 800 V                       |
| operating voltage / at DC / rated value  | 1 000 V                     |
| operating voltage / at AC / rated value  | 690 V                       |
| power loss [W] / maximum   | 20 W                        |
| power loss [W] / for rated value of the current / at AC / in hot operating state / per pole                                | 6.8 W                       |
| mechanical service life (operating cycles) / typical   | 20 000                      |
| electrical endurance (operating cycles) / at AC-1 / at 380/415 V   | 8 000                       |
| electrical endurance (operating cycles) / at AC-1 / at 690 V   | 4 000                       |
| electrical endurance (operating cycles) / at 480 V   | 8 000                       |
| electrical endurance (operating cycles) / at 600 V   | 4 000                       |
| product feature / for neutral conductors / upgradable/retrofitable / short-circuit and overload proof                      | No                          |
| product function   |                             |
| • communication function   | No                          |
| • other measurement function   | No                          |
| Net Weight   | 2 800 g                     |
| Current  |                             |
| marking / according to UL 489 / 100%-rated breaker   | Yes                         |
| operational current  |                             |
| • at 40 °C   | 80 A                        |
| • at 45 °C   | 77.7 A                      |
| • at 50 °C   | 75.5 A                      |
| • at 55 °C   | 73.2 A                      |
| • at 60 °C   | 71 A                        |

|   |  |
|---|--|
| <ul style="list-style-type: none"> <li>• at 65 °C</li> </ul>  | 68.7 A   |
| <ul style="list-style-type: none"> <li>• at 70 °C</li> </ul>  | 66.4 A   |
| <b>Switching capacity according to IEC 60947</b>  |  |
| switching capacity class of the circuit breaker   | C  |
| maximum short-circuit current breaking capacity (I <sub>cu</sub> ) <ul style="list-style-type: none"> <li>• at 240 V</li> <li>• at 415 V</li> <li>• at 690 V</li> </ul>                           | 200 kA<br>110 kA<br>10 kA  |
| operating short-circuit current breaking capacity (I <sub>cs</sub> ) <ul style="list-style-type: none"> <li>• at 240 V</li> <li>• at 415 V</li> <li>• at 690 V</li> </ul>                         | 200 kA<br>110 kA<br>10 kA  |
| short-circuit current making capacity (I <sub>cm</sub> ) <ul style="list-style-type: none"> <li>• at 240 V</li> <li>• at 415 V</li> <li>• at 690 V</li> </ul>                                     | 440 kA<br>242 kA<br>17 kA  |
| design of short-circuit protection  | For switching power values in DC networks, see the 3VA molded case circuit breaker device manual; link to be found under Service & Support in the last chapter |
| <b>Switching capacity according to UL 489</b>   |  |
| current breaking capacity <ul style="list-style-type: none"> <li>• at 240 V</li> <li>• at 480 V</li> <li>• at 600 V</li> </ul>  | 200 kA<br>100 kA<br>35 kA  |
| <b>Adjustable parameters</b>  |  |
| adjustable response value setting current (I <sub>r</sub> ) / of the L-trip / with I <sup>2</sup> t characteristic <ul style="list-style-type: none"> <li>• minimum</li> <li>• maximum</li> </ul> | 64 A<br>80 A   |
| adjustable response value delay time (t <sub>r</sub> ) / for L-tripping / with I <sup>2</sup> t characteristic <ul style="list-style-type: none"> <li>• minimum</li> <li>• maximum</li> </ul>     | 1 s<br>1 s   |
| adjustable response value setting current (I <sub>i</sub> ) / for I-tripping <ul style="list-style-type: none"> <li>• minimum</li> <li>• maximum</li> </ul>                                       | 400 A<br>800 A   |
| adjustable setting current (I <sub>nN</sub> ) / for N-tripping <ul style="list-style-type: none"> <li>• minimum</li> <li>• maximum</li> </ul>   | 0 A<br>0 A   |
| design of the N-conductor protection  | Without  |
| product function / grounding protection   | No   |
| <b>Mechanical Design</b>  |  |
| product component <ul style="list-style-type: none"> <li>• undervoltage release</li> <li>• voltage trigger</li> <li>• trip indicator</li> </ul>   | No<br>No<br>No   |
| height [in]   | 7.28 in  |
| height  | 185 mm   |
| width [in]  | 5.51 in  |
| width   | 140 mm   |
| depth [in]  | 3.27 in  |
| depth   | 83 mm  |
| <b>Connections</b>  |  |
| arrangement of electrical connectors / for main current circuit   | Without connection   |
| type of electrical connection / for main current circuit  | Without  |
| design of the surface / of the connections / on the bottom of the switch (N, 2, 4, 6)   | silver   |
| <b>Auxiliary circuit</b>  |  |
| number of CO contacts / for auxiliary contacts  | 0  |
| <b>Accessories</b>  |  |

|  |                                    |
|--|------------------------------------|
| product extension / optional / motor drive   | Yes                                |
| manufacturer's article number  |                                    |
| <ul style="list-style-type: none"> <li>of the supplied basic switch</li> </ul>   | <a href="#">3VA52807EF412AA0</a>   |
| <b>Environmental conditions</b>  |                                    |
| protection class IP / on the front   | IP40                               |
| ambient temperature  |                                    |
| <ul style="list-style-type: none"> <li>during operation / minimum</li> <li>during operation / maximum</li> <li>during storage / minimum</li> <li>during storage / maximum</li> </ul> | -25 °C<br>70 °C<br>-40 °C<br>80 °C |
| reference code / according to IEC 81346-2  | Q                                  |

**Approvals / Certificates**

**General Product Approval**



EG-Konf.

[Confirmation](#)



UL



UL

[Miscellaneous](#)

**General Product Approval      EMV      Maritime application**



RCM



ABS



BUREAU VERITAS



DNV

**Maritime application    other      Environment**



LRS

[Confirmation](#)

[Miscellaneous](#)

[Environmental Confirmations](#)

**Further information**

**Information on the packaging**

<https://support.industry.siemens.com/cs/ww/en/view/109813875>

**Information for data generation and storage**

<https://support.industry.siemens.com/cs/ww/en/view/109995012>

**Information- and Downloadcenter (Catalogs, Brochures,...)**

<https://www.siemens.com/lowvoltage/catalogs>

**Industry Mall (Online ordering system)**

<https://mall.industry.siemens.com/mall/en/en/Catalog/product?mlfb=3VA5280-7EF41-2AA0>

**Service&Support (Manuals, Certificates, Characteristics, FAQs,...)**

<https://support.industry.siemens.com/cs/ww/en/ps/3VA5280-7EF41-2AA0>

**Image database (product images, 2D dimension drawings, 3D models, device circuit diagrams, ...)**

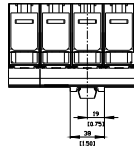
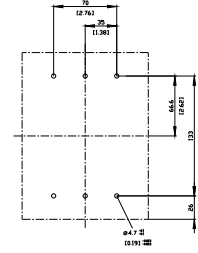
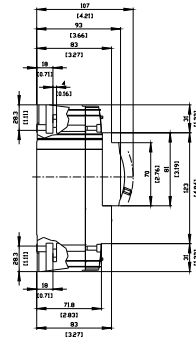
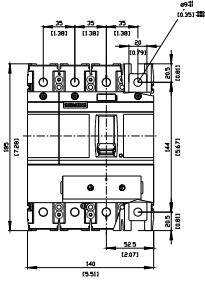
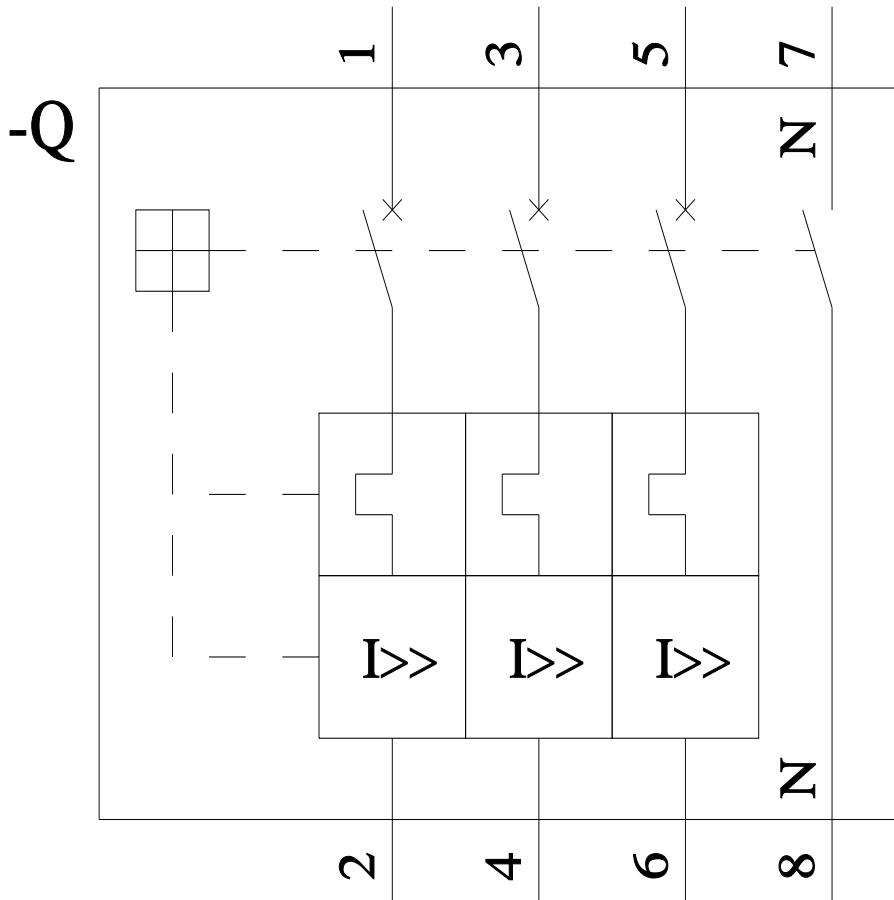
[https://www.automation.siemens.com/bilddb/cax\\_en.aspx?mlfb=3VA5280-7EF41-2AA0](https://www.automation.siemens.com/bilddb/cax_en.aspx?mlfb=3VA5280-7EF41-2AA0)

**CAX-Online-Generator**

<https://www.siemens.com/cax>

**Tender specifications**

<https://www.siemens.com/specifications>





last modified:

3/31/2025 

