



guide frame for 3WL10 - 3-pole front additional main connection equivalent to withdrawable circuit breaker without frame accessories for circuit breakers 3WL10

Model	
product brand name	SETRON
product designation	Guide frame
design of the product	main terminal, on front
Product function	
product function	Extension is included
accessories	Accessories for 3WL10 circuit breakers
Mechanical Design	
height	278 mm
width	363 mm
depth	271 mm
Net Weight	23.95 kg

Approvals Certificates	
General Product Approval	other

[Confirmation](#)



[Confirmation](#)

Environment

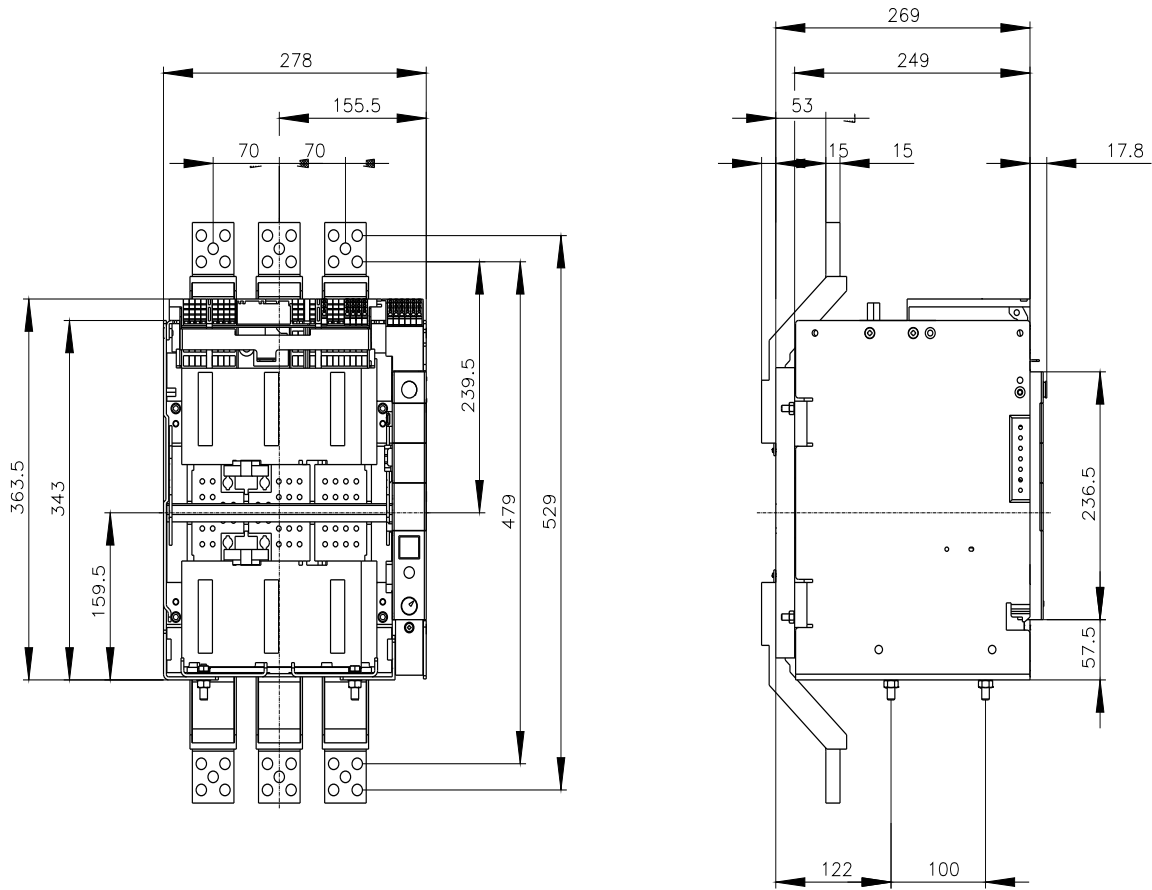
[Environmental Confirmations](#)

Further information

- Information on the packaging
<https://support.industry.siemens.com/cs/ww/en/view/109813875>
- Information for data generation and storage
<https://support.industry.siemens.com/cs/ww/en/view/109995012>
- Information- and Downloadcenter (Catalogs, Brochures,...)
<https://www.siemens.com/lowvoltage/catalogs>
- Industry Mall (Online ordering system)
<https://mall.industry.siemens.com/mall/en/en/Catalog/product?mlfb=3VW8112-0AE01>
- Service&Support (Manuals, Certificates, Characteristics, FAQs,...)
<https://support.industry.siemens.com/cs/ww/en/ps/3VW8112-0AE01>
- Image database (product images, 2D dimension drawings, 3D models, device circuit diagrams, ...)
https://www.automation.siemens.com/bilddb/cax_en.aspx?mlfb=3VW8112-0AE01
- CAx-Online-Generator
<https://www.siemens.com/cax>

Tender specifications

<https://www.siemens.com/specifications>



last modified:

4/4/2025 

