

locking mechanism to prevent movement of the withdrawable circuit breaker in the isolated position on the guide frame add-on for 3VW9011-0BA80/-0BA87 accessories for circuit breakers 3WL10 / 3VA27

Model	
product brand name	SETRON
product designation	locking device against movement of the withdrawable circuit breaker
design of the product	in isolated position, on guide frame
Accessories	
accessories	Accessories for 3WL10 / 3VA27 circuit breakers
Mechanical Design	
height	61 mm
width	90 mm
depth	140 mm
Net Weight	100 g
Approvals Certificates	
General Product Approval	Maritime application other



[Confirmation](#)



### Environment

[Environmental Confirmations](#)

### Further information

#### Information on the packaging

<https://support.industry.siemens.com/cs/ww/en/view/109813875>

#### Information for data generation and storage

<https://support.industry.siemens.com/cs/ww/en/view/109995012>

#### Information- and Downloadcenter (Catalogs, Brochures,...)

<https://www.siemens.com/lowvoltage/catalogs>

#### Industry Mall (Online ordering system)

<https://mall.industry.siemens.com/mall/en/en/Catalog/product?mlfb=3VW9011-0BA84>

#### Service&Support (Manuals, Certificates, Characteristics, FAQs,...)

<https://support.industry.siemens.com/cs/ww/en/ps/3VW9011-0BA84>

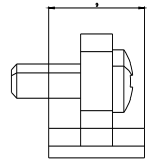
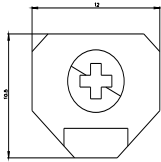
#### Image database (product images, 2D dimension drawings, 3D models, device circuit diagrams, ...)

[https://www.automation.siemens.com/bilddb/cax\\_en.aspx?mlfb=3VW9011-0BA84](https://www.automation.siemens.com/bilddb/cax_en.aspx?mlfb=3VW9011-0BA84)

#### CAX-Online-Generator

<https://www.siemens.com/cax>

#### Tender specifications



---

last modified:

4/4/2025 