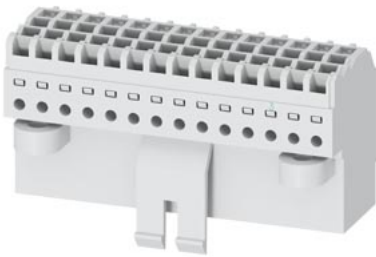









Accessory 3WA/3WL Secondary disconnect terminals Push-in connection terminals



Model	
product brand name	SETRON
product designation	Manual connector
design of the product	push-in connection terminal
Net Weight	70 g

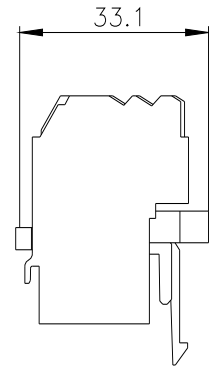
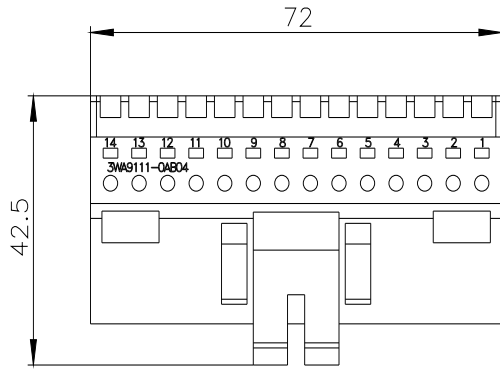
Approvals Certificates

General Product Approval	EMV	Test Certificates
    		Miscellaneous

Test Certificates	Maritime application	other
Special Test Certificate Type Test Certificates/Test Report		 Confirmation

Further information

- Information on the packaging
<https://support.industry.siemens.com/cs/ww/en/view/109813875>
- Information for data generation and storage
<https://support.industry.siemens.com/cs/ww/en/view/109995012>
- Information- and Downloadcenter (Catalogs, Brochures,...)
<https://www.siemens.com/lowvoltage/catalogs>
- Industry Mall (Online ordering system)
<https://mall.industry.siemens.com/mall/en/en/Catalog/product?mlfb=3WA9111-0AB04>
- Service&Support (Manuals, Certificates, Characteristics, FAQs,...)
<https://support.industry.siemens.com/cs/ww/en/ps/3WA9111-0AB04>
- Image database (product images, 2D dimension drawings, 3D models, device circuit diagrams, ...)
https://www.automation.siemens.com/bilddb/cax_en.aspx?mlfb=3WA9111-0AB04
- CAx-Online-Generator
<https://www.siemens.com/cax>
- Tender specifications
<https://www.siemens.com/specifications>



last modified:

4/13/2025 

