

Accessory Circuit breaker 3WA, Vertical main connections top or bottom, 1 piece for frame size 1 - up to 2000 A for circuit breaker in fixed mounted design

Model	
product brand name	SENTRON
product designation	Vertical main connections
design of the product	front connection for fixed-mounted circuit breakers
General technical data	
size of the circuit-breaker	1
switching capacity class of the circuit breaker	S, N, M, E
Net Weight	558.8 g

Approvals Certificates		
General Product Approval	EMV	Test Certificates



[Confirmation](#)



[Special Test Certificate](#)

Test Certificates	Maritime application	other
-------------------	----------------------	-------

[Miscellaneous](#)



[Confirmation](#)



### Further information

#### Information on the packaging

<https://support.industry.siemens.com/cs/ww/en/view/109813875>

#### Information for data generation and storage

<https://support.industry.siemens.com/cs/ww/en/view/109995012>

#### Information- and Downloadcenter (Catalogs, Brochures,...)

<https://www.siemens.com/lowvoltage/catalogs>

#### Industry Mall (Online ordering system)

<https://mall.industry.siemens.com/mall/en/en/Catalog/product?mlfb=3WA9111-0AM11>

#### Service&Support (Manuals, Certificates, Characteristics, FAQs,...)

<https://support.industry.siemens.com/cs/ww/en/ps/3WA9111-0AM11>

#### Image database (product images, 2D dimension drawings, 3D models, device circuit diagrams, ...)

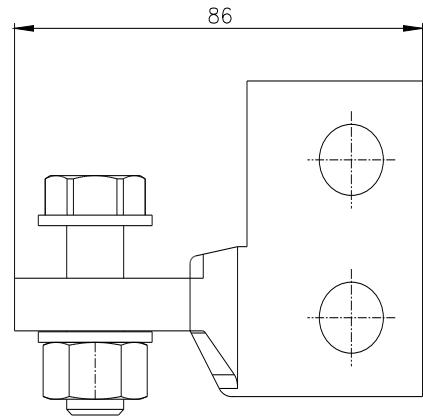
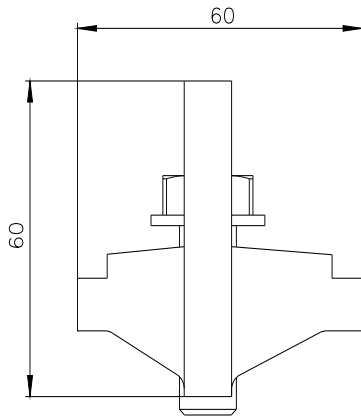
[https://www.automation.siemens.com/bilddb/cax\\_en.aspx?mlfb=3WA9111-0AM11](https://www.automation.siemens.com/bilddb/cax_en.aspx?mlfb=3WA9111-0AM11)

#### CAX-Online-Generator

<https://www.siemens.com/cax>

#### Tender specifications

<https://www.siemens.com/specifications>



---

last modified:

4/13/2025 

