

Accessory Circuit breaker 3WA, Front connection DIN 43673 double hole, top or bottom frame size 1 - up to 1000 A for circuit breaker in withdrawable design, 1 piece

Model	
product brand name	SENTRON
product designation	Front connection
design of the product	front connection for withdrawable circuit breakers

General technical data	
size of the circuit-breaker	1
switching capacity class of the circuit breaker	N, S
Net Weight	1 048.13 g

Approvals Certificates		
General Product Approval	EMV	Test Certificates



[Miscellaneous](#)

[Special Test Certificate](#)

Test Certificates	Maritime application	other
-------------------	----------------------	-------

[Type Test Certificates/Test Report](#)



[Confirmation](#)

Further information

Information on the packaging

<https://support.industry.siemens.com/cs/ww/en/view/109813875>

Information for data generation and storage

<https://support.industry.siemens.com/cs/ww/en/view/109995012>

Information- and Downloadcenter (Catalogs, Brochures,...)

<https://www.siemens.com/lowvoltage/catalogs>

Industry Mall (Online ordering system)

<https://mall.industry.siemens.com/mall/en/en/Catalog/product?mlfb=3WA9111-0AN11>

Service&Support (Manuals, Certificates, Characteristics, FAQs,...)

<https://support.industry.siemens.com/cs/ww/en/ps/3WA9111-0AN11>

Image database (product images, 2D dimension drawings, 3D models, device circuit diagrams, ...)

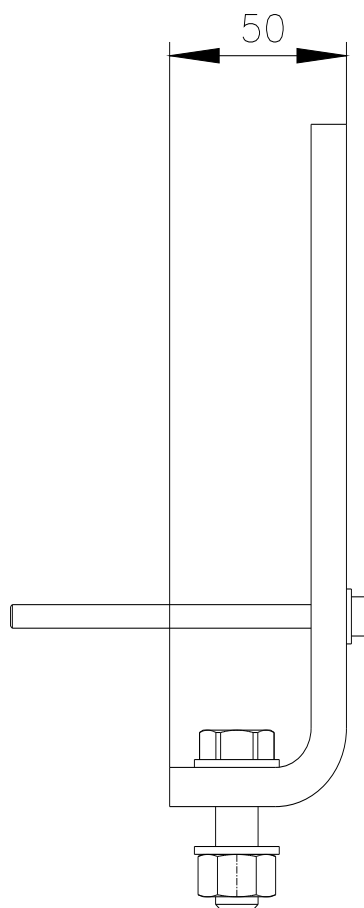
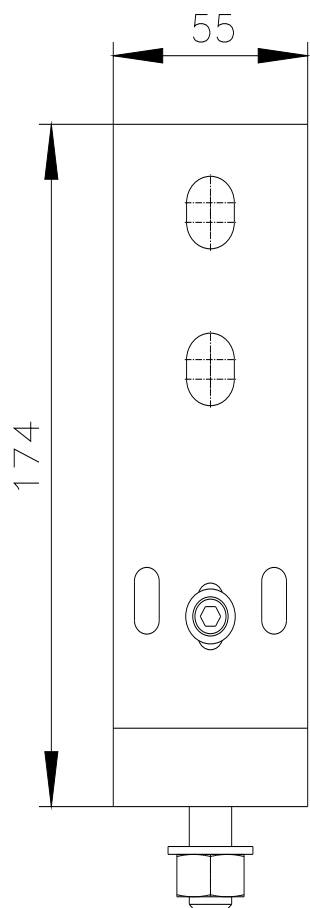
https://www.automation.siemens.com/bilddb/cax_en.aspx?mlfb=3WA9111-0AN11

CAX-Online-Generator

<https://www.siemens.com/cax>

Tender specifications

<https://www.siemens.com/specifications>



last modified:

4/13/2025 