

Accessory Circuit breaker 3WA, Rear vertical main- connection, TOP or BOTTOM, frame size 3 - 6300 A for breaking capacity H, C or E for circuit breaker in withdrawable design, 1set 3pole



Model	
product brand name	SENTRON
product designation	Rear vertical main connections
design of the product	rear vertical main connections for withdrawable circuit breakers

General technical data	
size of the circuit-breaker	3
switching capacity class of the circuit breaker	H, E, C
Net Weight	18 032 g

Approvals Certificates		
General Product Approval	EMV	Test Certificates



[Miscellaneous](#)

[Type Test Certificates/Test Report](#)

Test Certificates	Maritime application	other
-------------------	----------------------	-------

[Special Test Certificate](#)



[Confirmation](#)

Further information

Information on the packaging

<https://support.industry.siemens.com/cs/ww/en/view/109813875>

Information for data generation and storage

<https://support.industry.siemens.com/cs/ww/en/view/109995012>

Information- and Downloadcenter (Catalogs, Brochures,...)

<https://www.siemens.com/lowvoltage/catalogs>

Industry Mall (Online ordering system)

<https://mall.industry.siemens.com/mall/en/en/Catalog/product?mlfb=3WA9111-0AV32>

Service&Support (Manuals, Certificates, Characteristics, FAQs,...)

<https://support.industry.siemens.com/cs/ww/en/ps/3WA9111-0AV32>

Image database (product images, 2D dimension drawings, 3D models, device circuit diagrams, ...)

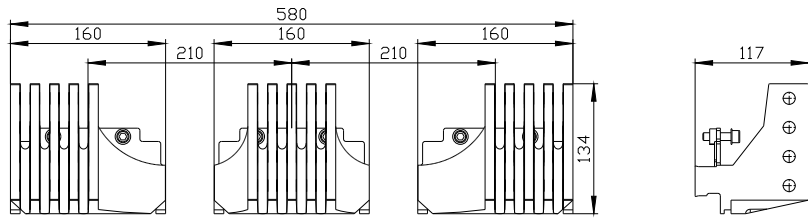
https://www.automation.siemens.com/bilddb/cax_en.aspx?mlfb=3WA9111-0AV32

CAX-Online-Generator

<https://www.siemens.com/cax>

Tender specifications

<https://www.siemens.com/specifications>



last modified:

4/9/2025 

