



Accessory Circuit breaker 3WA, Flange main connection top or bottom, for frame size 2 - up to 2000 A for circuit breaker in withdrawable design, 1 piece

Model			
product brand name	SENTRON		
product designation	Flange connection		
design of the product	flange connection for withdrawable circuit breakers		
General technical data			
size of the circuit-breaker	2		
switching capacity class of the circuit breaker	S, M, H, E, D		
Net Weight	1.027 kg		
Approvals Certificates			
General Product Approval	EMV	Test Certificates	other



[Miscellaneous](#)



other

[Confirmation](#)

Further information

Information on the packaging

<https://support.industry.siemens.com/cs/ww/en/view/109813875>

Information for data generation and storage

<https://support.industry.siemens.com/cs/ww/en/view/109995012>

Information- and Downloadcenter (Catalogs, Brochures,...)

<https://www.siemens.com/lowvoltage/catalogs>

Industry Mall (Online ordering system)

<https://mall.industry.siemens.com/mall/en/en/Catalog/product?mlfb=3WA9111-0AW21>

Service&Support (Manuals, Certificates, Characteristics, FAQs,...)

<https://support.industry.siemens.com/cs/ww/en/ps/3WA9111-0AW21>

Image database (product images, 2D dimension drawings, 3D models, device circuit diagrams, ...)

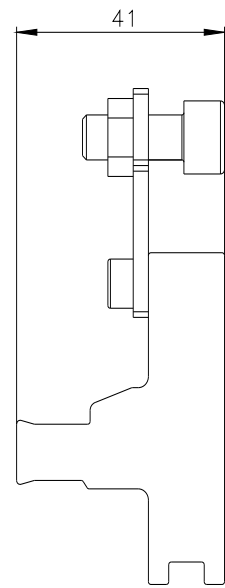
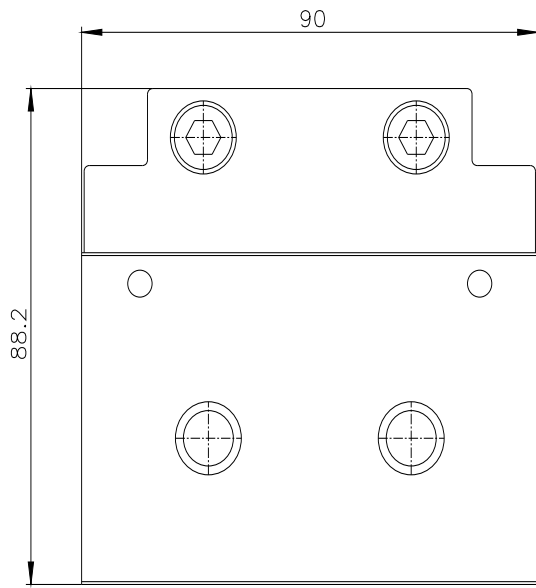
https://www.automation.siemens.com/bilddb/cax_en.aspx?mlfb=3WA9111-0AW21

CAX-Online-Generator

<https://www.siemens.com/cax>

Tender specifications

<https://www.siemens.com/specifications>



last modified:

4/13/2025 

