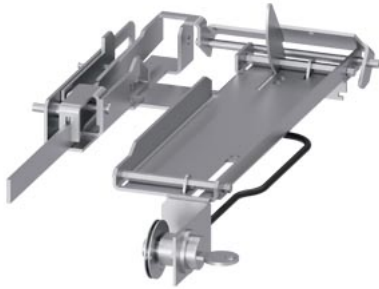


accessories for 3WA circuit breaker, locking provision to prevent movement of withdrawable circuit breaker in disconnected position (Bowden cable and lock in control cabinet door) made by CES. Spare part for Z option R81.



Model	
product brand name	SENTRON
product designation	padlock device
design of the product	Locking device against unauthorized closing of the withdrawable circuit breaker in the disconnected position, key operation with CES lock.
Net Weight	1 616.23 g

Approvals Certificates		
General Product Approval	EMV	Test Certificates

[Confirmation](#)



[Miscellaneous](#)

Test Certificates	Maritime application	other
-------------------	----------------------	-------

[Type Test Certificates/Test Report](#)

[Special Test Certificate](#)

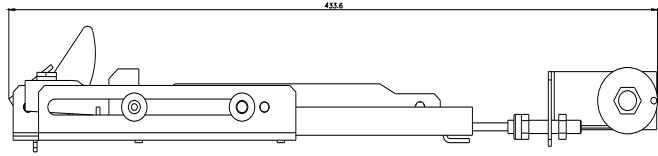
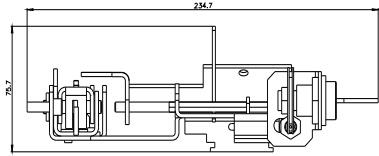


[Confirmation](#)



Further information

- Information on the packaging
<https://support.industry.siemens.com/cs/ww/en/view/109813875>
- Information for data generation and storage
<https://support.industry.siemens.com/cs/ww/en/view/109995012>
- Information- and Downloadcenter (Catalogs, Brochures,...)
<https://www.siemens.com/lowvoltage/catalogs>
- Industry Mall (Online ordering system)
<https://mall.industry.siemens.com/mall/en/en/Catalog/product?mlfb=3WA9111-0BA81>
- Service&Support (Manuals, Certificates, Characteristics, FAQs,...)
<https://support.industry.siemens.com/cs/ww/en/ps/3WA9111-0BA81>
- Image database (product images, 2D dimension drawings, 3D models, device circuit diagrams, ...)
https://www.automation.siemens.com/bilddb/cax_en.aspx?mlfb=3WA9111-0BA81
- CAX-Online-Generator
<https://www.siemens.com/cax>
- Tender specifications
<https://www.siemens.com/specifications>



last modified:

4/10/2025 