









Accessory circuit breaker 3WA, Automatic reset of the reclosing lockout

Model	
product brand name	SENTRON
product designation	Automatic reset
design of the product	automatic reset of the reclosing lockout (after a trip by the ETU)
Net Weight	26 g

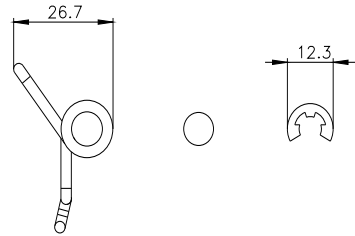
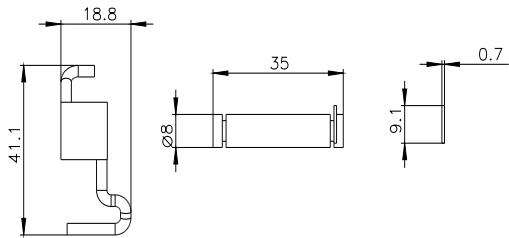
Approvals Certificates

General Product Approval	EMV	Test Certificates
 	Confirmation	 

Test Certificates	Maritime application	other
Type Test Certificates/Test Report		

Further information

- Information on the packaging
<https://support.industry.siemens.com/cs/ww/en/view/109813875>
- Information for data generation and storage
<https://support.industry.siemens.com/cs/ww/en/view/109995012>
- Information- and Downloadcenter (Catalogs, Brochures,...)
<https://www.siemens.com/lowvoltage/catalogs>
- Industry Mall (Online ordering system)
<https://mall.industry.siemens.com/mall/en/en/Catalog/product?mlfb=3WA9111-0EM31>
- Service&Support (Manuals, Certificates, Characteristics, FAQs,...)
<https://support.industry.siemens.com/cs/ww/en/ps/3WA9111-0EM31>
- Image database (product images, 2D dimension drawings, 3D models, device circuit diagrams, ...)
https://www.automation.siemens.com/bilddb/cax_en.aspx?mlfb=3WA9111-0EM31
- CAx-Online-Generator
<https://www.siemens.com/cax>
- Tender specifications
<https://www.siemens.com/specifications>



last modified:

4/13/2025 

