




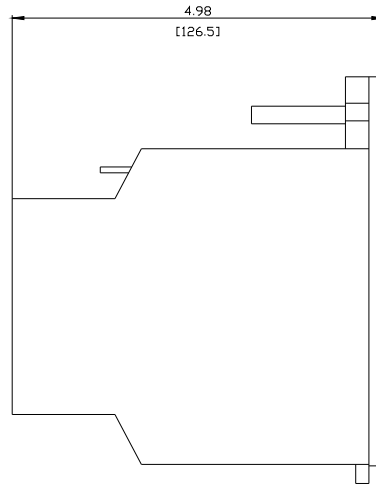
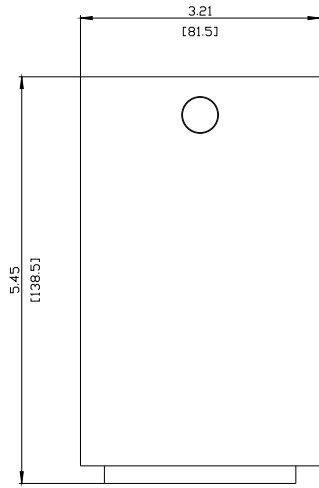


Arc Chute for circuit breakers fixed mounted and withdrawable, Frame Size 1, for 3WA2 breaking capacity class N / S / H, In = 800-2000A, for 3WA3 breaking capacity class N / S, In = 800-2000A, 1 piece

Model						
product brand name		SENTRON				
Net Weight		1.192 kg				
Approvals Certificates						
General Product Approval		EMV		Test Certificates		
 EG-Konf.				 RCM		
Confirmation		Type Test Certificates/Test Report		Miscellaneous		
Test Certificates		Maritime application		other		
Special Test Certificate		 LRS		Confirmation		
				Dangerous goods information		
<th>Further information</th>						Further information
Information on the packaging https://support.industry.siemens.com/cs/ww/en/view/109813875						
Information for data generation and storage https://support.industry.siemens.com/cs/ww/en/view/109995012						
Information- and Downloadcenter (Catalogs, Brochures,...) https://www.siemens.com/lowvoltage/catalogs						
Industry Mall (Online ordering system) https://mall.industry.siemens.com/mall/en/en/Catalog/product?mlfb=3WA9111-1AS00						
Service&Support (Manuals, Certificates, Characteristics, FAQs,...) https://support.industry.siemens.com/cs/ww/en/ps/3WA9111-1AS00						
Image database (product images, 2D dimension drawings, 3D models, device circuit diagrams, ...) https://www.automation.siemens.com/bilddb/cax_en.aspx?mlfb=3WA9111-1AS00						
CAx-Online-Generator https://www.siemens.com/cax						
Tender specifications https://www.siemens.com/specifications						



last modified:

10/18/2025 

