





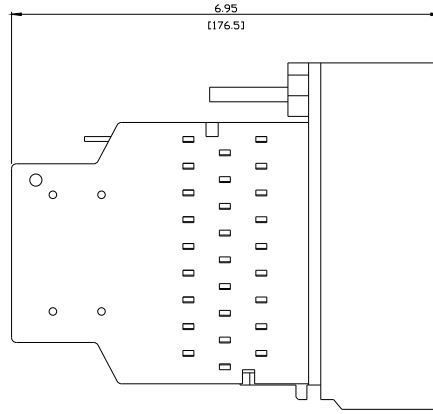
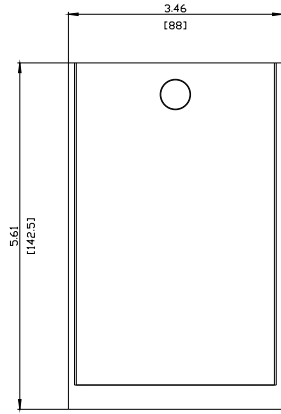




Arc Chute for circuit breakers fixed mounted, Frame Size 1, for 3WA2 breaking capacity class E, In = 800-2000A, for 3WA3 breaking capacity class E, In = 800-2000A, 1 piece

Model					
product brand name		SENTRON			
Net Weight		2.374 kg			
Approvals Certificates					
General Product Approval			EMV	Test Certificates	
		Confirmation			Type Test Certificates/Test Report
Test Certificates		Maritime application	other	Dangerous goods	
Special Test Certificate	Miscellaneous		Confirmation		Dangerous goods information
Further information					
<p>Information on the packaging https://support.industry.siemens.com/cs/ww/en/view/109813875</p> <p>Information for data generation and storage https://support.industry.siemens.com/cs/ww/en/view/109995012</p> <p>Information- and Downloadcenter (Catalogs, Brochures,...) https://www.siemens.com/lowvoltage/catalogs</p> <p>Industry Mall (Online ordering system) https://mall.industry.siemens.com/mall/en/en/Catalog/product?mlfb=3WA9111-1AS01</p> <p>Service&Support (Manuals, Certificates, Characteristics, FAQs,...) https://support.industry.siemens.com/cs/ww/en/ps/3WA9111-1AS01</p> <p>Image database (product images, 2D dimension drawings, 3D models, device circuit diagrams, ...) https://www.automation.siemens.com/bilddb/cax_en.aspx?mlfb=3WA9111-1AS01</p> <p>CAX-Online-Generator https://www.siemens.com/cax</p> <p>Tender specifications https://www.siemens.com/specifications</p>					



last modified:

10/18/2025 