





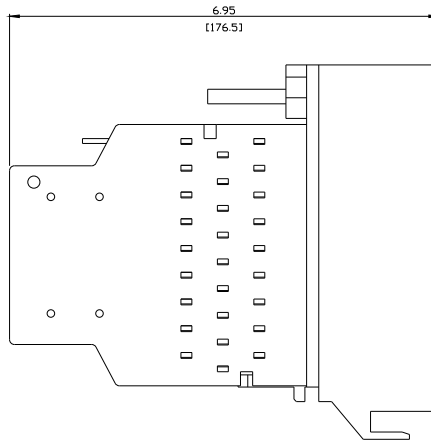
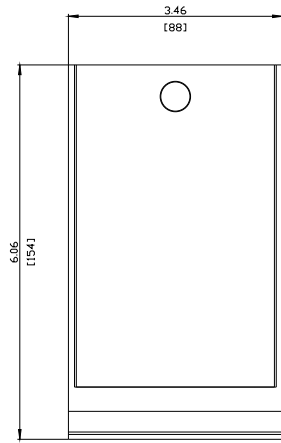




Arc Chute for circuit breakers withdrawable, Frame Size 1, for 3WA2 breaking capacity class, E, In = 800-2000A, for 3WA3 breaking capacity class E, In = 800-2000A, 1 piece

Model			
product brand name	SENTRON		
Net Weight	2.417 kg		
Approvals Certificates			
General Product Approval	EMV	Test Certificates	
 EG-Konf.	 Confirmation	 Confirmation	 Type Test Certificates/Test Report
Test Certificates	Maritime application	other	Dangerous goods
Special Test Certificate	Miscellaneous  LRS	Confirmation	 Dangerous goods information
Further information			

- Information on the packaging
<https://support.industry.siemens.com/cs/ww/en/view/109813875>
- Information for data generation and storage
<https://support.industry.siemens.com/cs/ww/en/view/109995012>
- Information- and Downloadcenter (Catalogs, Brochures,...)
<https://www.siemens.com/lowvoltage/catalogs>
- Industry Mall (Online ordering system)
<https://mall.industry.siemens.com/mall/en/en/Catalog/product?mlfb=3WA9111-1AS02>
- Service&Support (Manuals, Certificates, Characteristics, FAQs,...)
<https://support.industry.siemens.com/cs/ww/en/ps/3WA9111-1AS02>
- Image database (product images, 2D dimension drawings, 3D models, device circuit diagrams, ...)
https://www.automation.siemens.com/bilddb/cax_en.aspx?mlfb=3WA9111-1AS02
- CAX-Online-Generator
<https://www.siemens.com/cax>
- Tender specifications
<https://www.siemens.com/specifications>



last modified:

10/18/2025 

