



removable terminal block 2-pole, screw terminals up to maximum 2 x 2.5 mm<sup>2</sup> or 1 x 4 mm<sup>2</sup>, for SIRIUS devices in industrial DIN-rail enclosure , without inscription

product brand name	SIRIUS
product category	Removable terminals
product designation	Terminal for main circuit/2-pole
design of the product	Screw terminal/1 x 4 mm <sup>2</sup>
product type designation	3ZY1

General technical data	
Substance Prohibittance (Date)	03/01/2017
Net Weight	0.01 kg
type of connectable conductor cross-sections	<ul style="list-style-type: none"> <li>• solid 1x (0.5 ... 4.0mm<sup>2</sup>), 2x (0.5 ... 2.5 mm<sup>2</sup>)</li> <li>• finely stranded with core end processing 1x (0.5 ... 4 mm<sup>2</sup>), 2x (0.5 ... 1.5 mm<sup>2</sup>)</li> <li>• for AWG cables solid 1x (20 ... 12), 2x (20 ... 14)</li> </ul>
width	7.5 mm

Approvals Certificates	
General Product Approval	Test Certificates

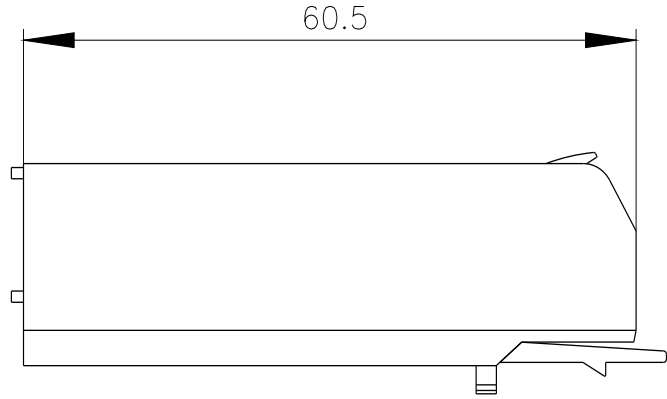
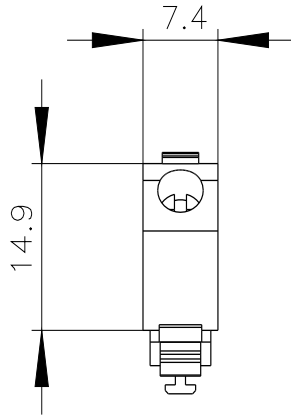


[Type Test Certificates/Test Report](#)

Maritime application	other	Environment
		<p><a href="#">Confirmation</a></p> <p><a href="#">Environmental Confirmations</a></p>

**Further information**

- Information on the packaging <https://support.industry.siemens.com/cs/ww/en/view/109813875>
- Information for data generation and storage <https://support.industry.siemens.com/cs/ww/en/view/109995012>
- Information- and Downloadcenter (Catalogs, Brochures,...) <https://www.siemens.com/ic10>
- Industry Mall (Online ordering system) <https://mall.industry.siemens.com/mall/en/en/Catalog/product?mlfb=3ZY1122-1BA00>
- Cax online generator <https://support.automation.siemens.com/WW/CAXorder/default.aspx?lang=en&mlfb=3ZY1122-1BA00>
- Service&Support (Manuals, Certificates, Characteristics, FAQs,...) <https://support.industry.siemens.com/cs/ww/en/ps/3ZY1122-1BA00>
- Image database (product images, 2D dimension drawings, 3D models, device circuit diagrams, EPLAN macros, ...)



---

last modified:

9/1/2025 