

MOTION CONNECT 800PLUS

Article No. : 6FX8002-2DC36-1BJ0

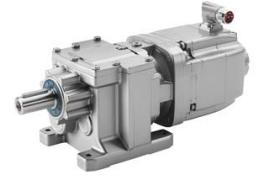


Figure similar

Client order no. :
Order no. :
Offer no. :
Remarks :

Item no. :
Consignment no. :
Project :

Electrical data

Design of the sensor	Motor encoder DRIVE-CLiQ
Test voltage, rms Signal conductors	500 V
Rated voltage U0/U in accordance with EN 50395 Power conductors	30 V

Mechanical data

Type of connection cable engine side	M12 full thread
Type of connection cable converter side	DRIVE-CLiQ RJ45
Maximum cable outer diameter	7.1 mm
Smallest bending radius (fixed installation)	35 mm
Smallest bending radius (flexible installation)	75 mm
Number of bends, max.	10,000,000
Maximum traversing velocity	300 m/min
Acceleration horizontal, max	50 m/s ²
Tensile stress, max. Fixed installation	50 N/mm ²
Tensile stress, max. Flexible installation	20 N/mm ²
Torsional stress	Absolute 30°/m
Length	18.0 m

Technical data

Ambient temperature

Operation with permanently installed cable	-50 ... 80 °C Module- and motor-side RJ45 plug -20°C ... 80°C, M17 plug -20 ... 80°C
Operation with moving cable	-20 ... 60 °C
Storage	-20 ... 80 °C Module- and motor-side RJ45 plug -20°C ... 80°C, M17 plug -20 ... 80°C
Kind of connection cable	Basis cable
Material of the cable sheath	PUR, HD22.10 S2 (VDE 0282, part 10) DESINA- color green RAL 6018
Type of insulation	without CFC and silicone IEC 60754-1/DIN VDE 0472-815
Standard for behavior in fire: flame resistance	EN 60332-1-1 to 1-3
Oil resistance	EN 60811-2-1
Verification of suitability as authorisation for USA	UL STYLE 2502
Verification of suitability as authorisation for Canada	CSA-N.210.2-M90