

Article No. : 6SL3220-2YH60-0CB0



Figure similar

Client order no. :
Order no. :
Offer no. :
Remarks :

Item no. :
Consignment no. :
Project :

Rated data

Input

| | | |
|----------------------|---------------------------|-----------------|
| Number of phases | 3 AC | |
| Line voltage | 500 ... 690 V +10 % -10 % | |
| Line frequency | 47 ... 63 Hz | |
| Rated voltage | 690V IEC | 600V NEC |
| Rated current (LO) | 437.00 A | 461.00 A |
| Rated current (HO) | 362.00 A | 381.00 A |

Output

| | | |
|-------------------------------------|-----------------|------------------------------|
| Number of phases | 3 AC | |
| Rated voltage | 690V IEC | 600V NEC¹⁾ |
| Rated power (LO) | 400.00 kW | 450.00 hp |
| Rated power (HO) | 355.00 kW | 350.00 hp |
| Rated current (LO) | 420.00 A | 432.00 A |
| Rated current (HO) | 348.00 A | 367.00 A |
| Rated current (IN) | 453.00 A | |
| Max. output current | 598.00 A | |
| Pulse frequency | 2 kHz | |
| Output frequency for vector control | 0 ... 100 Hz | |
| Output frequency for V/f control | 0 ... 100 Hz | |

Overload capability

| | |
|--------------------|--|
| Low Overload (LO) | 110% base load current IL for 60 s in a 300 s cycle time |
| High Overload (HO) | 150% x base load current IH for 60 s within a 300 s cycle time |

General tech. specifications

| | |
|-----------------------------------|---|
| Power factor λ | 0.75 ... 0.93 |
| Offset factor $\cos \phi$ | 0.96 |
| Efficiency η | 0.98 |
| Sound pressure level (1m) | 74 dB |
| Power loss ³⁾ | 7.670 kW |
| Filter class (integrated) | RFI suppression filter for Category C3 |
| EMC category (with accessories) | Category C3 |
| Safety function "Safe Torque Off" | without SIRIUS device (e.g. via S7-1500F) |

Communication

| | |
|---------------|-------------------------------|
| Communication | USS, Modbus RTU, BACnet MS/TP |
|---------------|-------------------------------|

Inputs / outputs

Standard digital inputs

| | |
|------------------------|-------|
| Number | 6 |
| Switching level: 0 → 1 | 11 V |
| Switching level: 1 → 0 | 5 V |
| Max. inrush current | 15 mA |

Fail-safe digital inputs

| | |
|--------|---|
| Number | 1 |
|--------|---|

Digital outputs

| | |
|------------------------------------|----------------|
| Number as relay changeover contact | 2 |
| Output (resistive load) | DC 30 V, 5.0 A |
| Number as transistor | 0 |

Analog / digital inputs

| | |
|------------|------------------------|
| Number | 2 (Differential input) |
| Resolution | 10 bit |

Switching threshold as digital input

| | |
|-------|-------|
| 0 → 1 | 4 V |
| 1 → 0 | 1.6 V |

Analog outputs

| | |
|--------|-------------------------|
| Number | 1 (Non-isolated output) |
|--------|-------------------------|

PTC/ KTY interface

| |
|--|
| 1 motor temperature sensor input, sensors that can be connected PTC, KTY and Thermo-Click, accuracy ± 5 °C |
|--|

Closed-loop control techniques

| | |
|---|-----|
| V/f linear / square-law / parameterizable | Yes |
| V/f with flux current control (FCC) | Yes |
| V/f ECO linear / square-law | Yes |
| Sensorless vector control | Yes |
| Vector control, with sensor | No |
| Encoderless torque control | No |
| Torque control, with encoder | No |

Data sheet for SINAMICS G120X

Article No. : 6SL3220-2YH60-0CB0

Ambient conditions

| | |
|-----------------------------|--|
| Standard board coating type | Class 3C2, according to IEC 60721-3-3: 2002 |
| Cooling | Air cooling using an integrated fan |
| Cooling air requirement | 0.362 m ³ /s (12.784 ft ³ /s) |
| Installation altitude | 1,000 m (3,280.84 ft) |
| Ambient temperature | |
| Operation | 0 ... 45 °C (32 ... 113 °F) |
| Transport | -40 ... 70 °C (-40 ... 158 °F) |
| Storage | -25 ... 55 °C (-13 ... 131 °F) |
| Relative humidity | |
| Max. operation | 95 % At 40 °C (104 °F), condensation and icing not permissible |

Connections

| | |
|---------------------------------------|---|
| Signal cable | |
| Conductor cross-section | 0.15 ... 1.50 mm ² (AWG 24 ... AWG 16) |
| Line side | |
| Version | M12 screw |
| Conductor cross-section | 4 x 240.00 mm ² (MCM 2 x 500 ... MCM 4 x 500) |
| Motor end | |
| Version | M12 screw |
| Conductor cross-section | 4 x 240.00 mm ² (MCM 2 x 500 ... MCM 4 x 500) |
| DC link (for braking resistor) | |
| PE connection | M12 screw |
| Max. motor cable length | |
| Shielded | 150 m (492.13 ft) |

Mechanical data

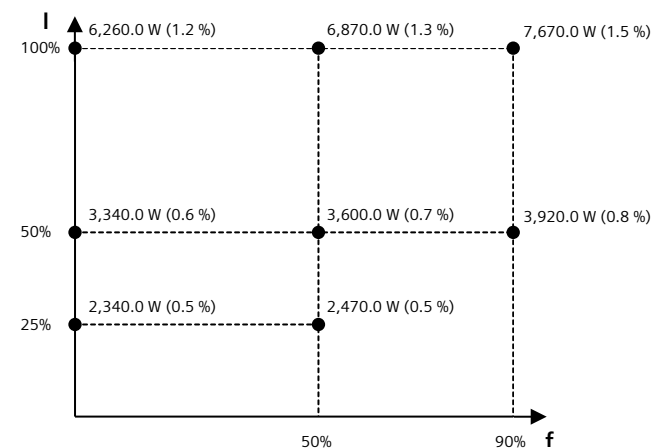
| | |
|----------------------|---------------------|
| Degree of protection | IP20 / UL open type |
| Frame size | FSH |
| Net weight | 162 kg (357.15 lb) |
| Dimensions | |
| Width | 548 mm (21.57 in) |
| Height | 1,695 mm (66.73 in) |
| Depth | 393 mm (15.47 in) |

Standards

| | |
|---------------------------|---|
| Compliance with standards | UL, cUL, CE, C-Tick (RCM), EAC, KCC, SEMI F47, REACH |
| CE marking | EMC Directive 2004/108/EC, Low-Voltage Directive 2006/95/EC |

Converter losses to IEC61800-9-2*

| | |
|--|--------|
| Efficiency class | IE2 |
| Comparison with the reference converter (90% / 100%) | 36.6 % |



The percentage values show the losses in relation to the rated apparent power of the converter.

The diagram shows the losses for the points (as per standard IEC61800-9-2) of the relative torque generating current (I) over the relative motor stator frequency (f). The values are valid for the basic version of the converter without options/components.

*calculated values

¹⁾The output current and HP ratings are valid for the voltage range 550V-600V

³⁾Typical value. More information can be found in the element group "Converter losses to IEC 61800-9-2" in this datasheet.

Data sheet for SINAMICS G120X

Article No. : 6SL3220-2YH60-0CB0

Operator panel: Basic Operator Panel (BOP-2)

Screen

Display design LCD, monochrome

Mechanical data

Degree of protection IP55 / UL type 12

Net weight 0.140 kg (0.31 lb)

Dimensions

Width 70.00 mm (2.76 in)

Height 106.85 mm (4.21 in)

Depth 19.60 mm (0.77 in)

Ambient conditions

Ambient temperature

Operation 0 ... 50 °C (32 ... 122 °F)

Storage -40 ... 70 °C (-40 ... 158 °F)

Transport -40 ... 70 °C (-40 ... 158 °F)

Relative humidity at 25°C during

Max. operation 95 %

Approvals

Certificate of suitability CE, cULus, EAC, KCC, RCM

Data sheet for Line reactor

Article No. : 6SL3000-0CH34-8AA0

Client order no. :
 Order no. :
 Offer no. :
 Remarks :

Item no. :
 Consignment no. :
 Project :

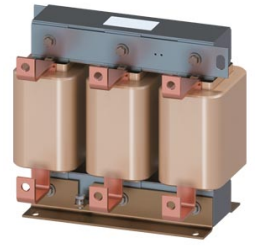


Figure similar

Rated data

Input

| | |
|------------------|---------------|
| Number of phases | 3 AC |
| Line voltage | 500 ... 690 V |

Output

| | |
|---------------|---------|
| Rated current | 482.0 A |
|---------------|---------|

Mechanical data

Dimensions

| | |
|----------------------|--------------------|
| Width | 350.0 mm (13.8 in) |
| Height | 321.0 mm (12.6 in) |
| Depth | 232.5 mm (9.2 in) |
| Degree of protection | IP00 |
| Net weight | 55.6 kg (123.0 lb) |

Connections

Load side

| | |
|---------|------------------|
| Version | 1 x hole for M10 |
|---------|------------------|

PE connection

| | |
|---------|----------|
| Version | M6 screw |
|---------|----------|