

Article No. : 6SL3220-2YH64-1CB0



Figure similar

Client order no. :
Order no. :
Offer no. :
Remarks :

Item no. :
Consignment no. :
Project :

Rated data

Input

Number of phases	3 AC	
Line voltage	500 ... 690 V +10 % -10 %	
Line frequency	47 ... 63 Hz	
Rated voltage	690V IEC	600V NEC
Rated current (LO)	540.00 A	591.00 A
Rated current (HO)	461.00 A	501.00 A

Output

Number of phases	3 AC	
Rated voltage	690V IEC	600V NEC¹⁾
Rated power (LO)	500.00 kW	500.00 hp
Rated power (HO)	450.00 kW	450.00 hp
Rated current (LO)	520.00 A	546.00 A
Rated current (HO)	444.00 A	482.00 A
Rated current (IN)	581.00 A	
Max. output current	768.00 A	
Pulse frequency	2 kHz	
Output frequency for vector control	0 ... 100 Hz	
Output frequency for V/f control	0 ... 100 Hz	

Overload capability

Low Overload (LO)	110% base load current IL for 60 s in a 300 s cycle time
High Overload (HO)	150% x base load current IH for 60 s within a 300 s cycle time

General tech. specifications

Power factor λ	0.75 ... 0.93
Offset factor $\cos \phi$	0.96
Efficiency η	0.98
Sound pressure level (1m)	74 dB
Power loss ³⁾	9.180 kW
Filter class (integrated)	RFI suppression filter for Category C3
EMC category (with accessories)	Category C3
Safety function "Safe Torque Off"	without SIRIUS device (e.g. via S7-1500F)

Communication

Communication	USS, Modbus RTU, BACnet MS/TP
---------------	-------------------------------

Inputs / outputs

Standard digital inputs

Number	6
Switching level: 0 → 1	11 V
Switching level: 1 → 0	5 V
Max. inrush current	15 mA

Fail-safe digital inputs

Number	1
--------	---

Digital outputs

Number as relay changeover contact	2
Output (resistive load)	DC 30 V, 5.0 A
Number as transistor	0

Analog / digital inputs

Number	2 (Differential input)
Resolution	10 bit

Switching threshold as digital input

0 → 1	4 V
1 → 0	1.6 V

Analog outputs

Number	1 (Non-isolated output)
--------	-------------------------

PTC/ KTY interface

1 motor temperature sensor input, sensors that can be connected PTC, KTY and Thermo-Click, accuracy ± 5 °C
--

Closed-loop control techniques

V/f linear / square-law / parameterizable	Yes
V/f with flux current control (FCC)	Yes
V/f ECO linear / square-law	Yes
Sensorless vector control	Yes
Vector control, with sensor	No
Encoderless torque control	No
Torque control, with encoder	No

Data sheet for SINAMICS G120X

Article No. : 6SL3220-2YH64-1CB0

Ambient conditions

Standard board coating type	Class 3C2, according to IEC 60721-3-3: 2002
Cooling	Air cooling using an integrated fan
Cooling air requirement	0.450 m ³ /s (15.892 ft ³ /s)
Installation altitude	1,000 m (3,280.84 ft)
Ambient temperature	
Operation	0 ... 45 °C (32 ... 113 °F)
Transport	-40 ... 70 °C (-40 ... 158 °F)
Storage	-25 ... 55 °C (-13 ... 131 °F)
Relative humidity	
Max. operation	95 % At 40 °C (104 °F), condensation and icing not permissible

Connections

Signal cable	
Conductor cross-section	0.15 ... 1.50 mm ² (AWG 24 ... AWG 16)
Line side	
Version	M12 screw
Conductor cross-section	6 x 240.00 mm ² (MCM 4 x 500 ... MCM 6 x 500)
Motor end	
Version	M12 screw
Conductor cross-section	6 x 240.00 mm ² (MCM 4 x 500 ... MCM 8 x 500)
DC link (for braking resistor)	
PE connection	M12 screw
Max. motor cable length	
Shielded	150 m (492.13 ft)

Mechanical data

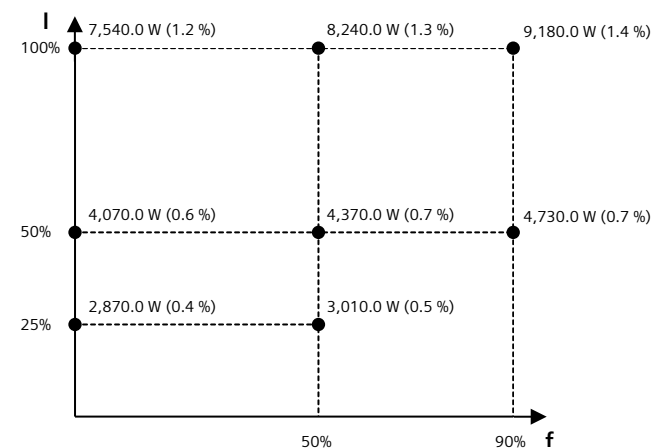
Degree of protection	IP20 / UL open type
Frame size	FSJ
Net weight	236 kg (520.29 lb)
Dimensions	
Width	801 mm (31.54 in)
Height	1,621 mm (63.82 in)
Depth	393 mm (15.47 in)

Standards

Compliance with standards	UL, cUL, CE, C-Tick (RCM), EAC, KCC, SEMI F47, REACH
CE marking	EMC Directive 2004/108/EC, Low-Voltage Directive 2006/95/EC

Converter losses to IEC61800-9-2*

Efficiency class	IE2
Comparison with the reference converter (90% / 100%)	35.2 %



The percentage values show the losses in relation to the rated apparent power of the converter.

The diagram shows the losses for the points (as per standard IEC61800-9-2) of the relative torque generating current (I) over the relative motor stator frequency (f). The values are valid for the basic version of the converter without options/components.

*calculated values

¹⁾The output current and HP ratings are valid for the voltage range 550V-600V

³⁾Typical value. More information can be found in the element group "Converter losses to IEC 61800-9-2" in this datasheet.

Data sheet for SINAMICS G120X

Article No. : 6SL3220-2YH64-1CB0

Operator panel: Basic Operator Panel (BOP-2)

Screen

Display design LCD, monochrome

Mechanical data

Degree of protection IP55 / UL type 12

Net weight 0.140 kg (0.31 lb)

Dimensions

Width 70.00 mm (2.76 in)

Height 106.85 mm (4.21 in)

Depth 19.60 mm (0.77 in)

Ambient conditions

Ambient temperature

Operation 0 ... 50 °C (32 ... 122 °F)

Storage -40 ... 70 °C (-40 ... 158 °F)

Transport -40 ... 70 °C (-40 ... 158 °F)

Relative humidity at 25°C during

Max. operation 95 %

Approvals

Certificate of suitability CE, cULus, EAC, KCC, RCM

Data sheet for SINAMICS G120X

Article No. : 6SL3220-2YH64-1CB0

I/O Extension Module

Inputs / outputs

Digital inputs

Number of digital inputs ¹⁾	2
Conductor cross-section	0.5 ... 1.5 mm ² (AWG 21 ... AWG 16) Alternatively 2 x 0.5 mm ²
Input voltage (0→1)	11 V
Input voltage (1→0)	5 V
Input voltage, max.	30 V

Digital outputs

Number of digital outputs	4
Conductor cross-section	1.5 mm ² (AWG 16)
Output current ²⁾	2 A

Analog inputs

Number of analog inputs ³⁾	2
Conductor cross-section	0.5 ... 1.5 mm ² (AWG 21 ... AWG 16) alternatively 2*0.5 mm ²
Current	0 ... 20 mA

Analog outputs

Number of analog outputs	2
Type of analog outputs ⁴⁾	Non-isolated output
Conductor cross-section	0.5 ... 1.5 mm ² (AWG 21 ... AWG 16) Alternatively 2 x 0.5 mm ²
Output voltage	0 ... 10 V
Output current	0 ... 20 mA

Mechanical data

Dimensions

Width	71 mm (2.80 in)
Height	117 mm (4.61 in)
Depth	27 mm (1.06 in)

¹⁾DI 6: digital input; DI 7: P or M switch; DI COM: Input for Control Unit interface (24 V out, max. 250 mA)

²⁾The max. current depends on the temperature and the size of the connected converted. It varies between 2 A and 3 A at 30 V DC.

³⁾2 analog inputs for the connection of Pt1000/Ni1000 temperature sensors. One of which can be optionally used as analog input.

⁴⁾Switchable between voltage (0 ... 10 V) and current (0 ... 20 mA) using a parameter

Data sheet for Line reactor

Article No. : 6SL3000-0CH36-0AA0

Client order no. :
Order no. :
Offer no. :
Remarks :

Item no. :
Consignment no. :
Project :

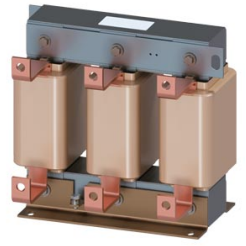


Figure similar

Rated data

Input

Number of phases	3 AC
Line voltage	500 ... 690 V

Output

Rated current	597.0 A
---------------	---------

Mechanical data

Dimensions

Width	350.0 mm (13.8 in)
Height	321.0 mm (12.6 in)
Depth	232.5 mm (9.2 in)
Degree of protection	IP00
Net weight	63.8 kg (141.0 lb)

Connections

Load side

Version	1 x hole for M12
---------	------------------

PE connection

Version	M6 screw
---------	----------